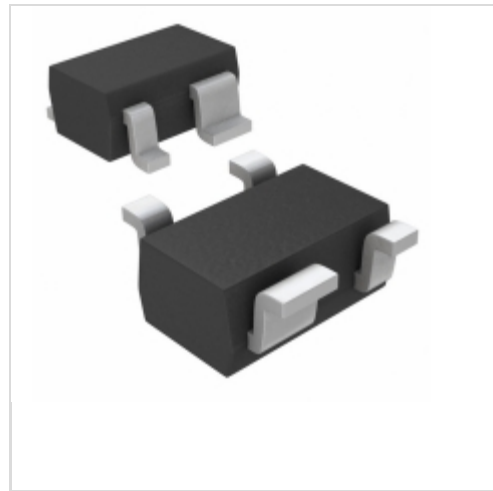


**MAX6385XS19D1-T**

**Maxim Integrated**

 IC MPU/RESET CIRC 1.90V SC70-4  
 Contains lead / RoHS non-compliant  
 Integrated Circuits (ICs)

1.MAX6385XS19D1-T.pdf

2.MAX6385XS19D1-T.pdf

**Buy Now**

We can supply MAX6385XS19D1-T, use the request quote form to request MAX6385XS19D1-T price and lead time. Zeano is a professional electronic components distributor. With 3+ Million line items of available electronic components can ship in short lead-time, over 250 thousand part numbers of electronic components in stock for immediately delivery, which may include part number MAX6385XS19D1-T. The price and lead time for MAX6385XS19D1-T depending on the quantity required and warehouse location. Contact us and our sales representative will provide you price. We look forward to work with you.

## Shopping Process

**1**
**Confirm the product**

**2**
**submit the order**

**3**
**payment**

**4**
**wait for delivery**

**5**
**receive the goods**

## Specifications

<b>Voltage - Threshold:</b>	1.9V
<b>Type:</b>	Simple Reset/Power-On Reset
<b>Supplier Device Package:</b>	SC-70-4
<b>Series:</b>	-
<b>Reset Timeout:</b>	1 ms Minimum
<b>Reset:</b>	Active High
<b>Packaging:</b>	Tape & Reel (TR)
<b>Package / Case:</b>	SC-82A, SOT-343
<b>Output:</b>	Push-Pull, Totem Pole
<b>Operating Temperature:</b>	-40°C ~ 125°C (TA)
<b>Number of Voltages Monitored:</b>	1
<b>Mounting Type:</b>	Surface Mount

## Related products


**MAX6385XS18D7-T**

 in stock  
[MAXIM](#)

RFQ


**MAX6385XS18D6-T**

 in stock  
[MAXIM](#)

RFQ


**MAX6385XS19D3-T**

 IC MPU/RESET CIRC 1.90V SC70-4  
[Maxim Integrated](#)

RFQ


**MAX6385XS19D1-T**

 in stock  
[MAXIM](#)

RFQ


**MAX6385XS18D6-T**

 IC MPU/RESET CIRC 1.80V SC70-4  
[Maxim Integrated](#)

RFQ


**MAX6385XS18D7-T**

 IC MPU/RESET CIRC 1.80V SC70-4  
[Maxim Integrated](#)

RFQ


**MAX6385XS19D2-T**

 in stock  
[MAXIM](#)

RFQ


**MAX6385XS19D2-T**

 IC MPU/RESET CIRC 1.90V SC70-4  
[Maxim Integrated](#)

RFQ


**MAX6385XS19D3-T**

 in stock  
[MAXIM](#)

RFQ


**MAX6385XS18D5-T**

 IC MPU/RESET CIRC 1.80V SC70-4  
[Maxim Integrated](#)

RFQ

## Guess You May Looking For


**MCR10EZH5233**

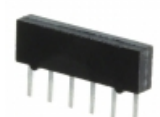
 RES SMD 523K OHM 1% 1/8W 0805  
[Rohm Semiconductor](#)

RFQ


**RG2012P-1333-B-T1**

 RES SMD 133K OHM 0.1% 1/8W 0805  
[Susumu](#)

RFQ


**4306R-101-473LF**

 RES ARRAY 5 RES 47K OHM 6SIP  
[Bourns Inc.](#)

RFQ


**745X101151JP**

 RES ARRAY 8 RES 150 OHM 2512  
[CTS Resistor Products](#)

RFQ


**SOMC16036K80GEA**

 RES ARRAY 8 RES 6.8K OHM 16SOIC  
[Vishay Dale](#)

RFQ


**4610H-101-272LF**

 RES ARRAY 9 RES 2.7K OHM 10SIP  
[Bourns Inc.](#)

RFQ


**PF1262-5KF1**

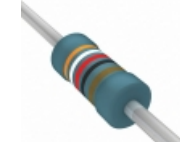
 RES 5K OHM 20W 1% TO126  
[Riedon](#)

RFQ


**RNF14JTD47R0**

 RES 47 OHM 1/4W 5% AXIAL  
[Stackpole Electronics Inc.](#)

RFQ


**MBB02070C3920FRP00**

 RES 392 OHM 0.6W 1% AXIAL  
[Vishay BC Components](#)

RFQ


**CMF508K2000JNEA**

 RES 8.2K OHM 1/4W 5% AXIAL  
[Vishay Dale](#)

RFQ