

0313.062MXP



Hamlin / Littelfuse

FUSE GLASS 62MA 250VAC 3AB 3AG
Lead free / RoHS Compliant
Circuit Protection

[0313.062MXP.pdf](#)

Buy Now

Out Stock

0 pcs

Minimum:1

Multiples:100

Manufacturer lead time 10 weeks

Images are for reference only.

See Product Specifications for product details.

If you are interested to buy 0313.062MXP,Just Email us.

Sales@zeanoit.com

our sales team will reply you within 24 hours

Shopping Process

1

Confirm the product

2

submit the order

3

payment

4

wait for delivery

5

receive the goods

Specifications

Voltage Rating - DC:	-
Voltage Rating - AC:	250V
Size / Dimension:	0.250" Dia x 1.250" L (6.35mm x 31.75mm)
Series:	313
Response Time:	Slow
Packaging:	Bulk
Package / Case:	3AB, 3AG, 1/4" x 1-1/4"
Operating Temperature:	-55°C ~ 125°C
Mounting Type:	Holder
Melting I²t:	0.021
Fuse Type:	Cartridge, Glass
DC Cold Resistance:	120 Ohm
Current Rating:	62mA
Color:	-
Breaking Capacity @ Rated Voltage:	35A
Approvals:	CE, CSA, UL

Related products



0313.100H
FUSE GLASS 100MA 250VAC 3AB 3AG
[Littelfuse Inc.](#)

RFQ



0313.062HXP
FUSE GLASS 62MA 250VAC 3AB 3AG
[Littelfuse Inc.](#)

RFQ



0313.040HXP
FUSE GLASS 40MA 250VAC 3AB 3AG
[Littelfuse Inc.](#)

RFQ



0313.040MXP
FUSE GLASS 40MA 250VAC 3AB 3AG
[Littelfuse Inc.](#)

RFQ



0313.100MXP
FUSE GLASS 100MA 250VAC 3AB 3AG
[Littelfuse Inc.](#)

RFQ



0313.062VXP
FUSE GLASS 62MA 250VAC 3AB 3AG
[Littelfuse Inc.](#)

RFQ



0313.100HXP
FUSE GLASS 100MA 250VAC 3AB 3AG
[Littelfuse Inc.](#)

RFQ



0313.100VXP
FUSE GLASS 100MA 250VAC 3AB 3AG
[Littelfuse Inc.](#)

RFQ



0313.062H
FUSE GLASS 62MA 250VAC 3AB 3AG
[Littelfuse Inc.](#)

RFQ



0313.040VXP
FUSE GLASS 40MA 250VAC 3AB 3AG
[Littelfuse Inc.](#)

RFQ

Guess You May Looking For



LMIN025.ZXPROA
FUSE LOWPROFILE MINI 58V 25A 25P
[Littelfuse Inc.](#)

RFQ



0001.2504.PT
FUSE CERM 1A 250VAC 300VDC 5X20
[Schurter Inc.](#)

RFQ



BK/GBB-V-10-R
FUSE CERM 10A 250VAC 125VDC 3AB
[Eaton](#)

RFQ



0031.8323
FUSE GLASS 4A 250VAC 5X20MM
[Schurter Inc.](#)

RFQ



BK/C518-5A
FUSE GLASS 5A 250VAC 2AG
[Eaton](#)

RFQ



0001.2538
FUSE CERAMIC 25A 150VAC 63VDC
[Schurter Inc.](#)

RFQ



BK/ETF-315MA
FUSE BOARD MNT 315MA 277VAC RAD
[Eaton](#)

RFQ



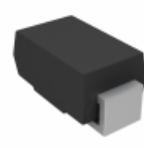
30R090UPR
PTC RESETTABLE .90A 30V KINK AMO
[Littelfuse Inc.](#)

RFQ



SMBJ43CA-E3/52
TVS DIODE 43VWM 69.4VC SMB
[Vishay Semiconductor Diodes Division](#)

RFQ



P4SMA180A-E3/61
TVS DIODE 154VWM 246VC SMA
[Vishay Semiconductor Diodes Division](#)

RFQ