

MB90F867ESPMC-GS-AE1

Cypress Semiconductor

IC MCU 16BIT 128KB FLASH 100LQFP

Lead free / RoHS Compliant

Integrated Circuits (ICs)

Buy Now
Out Stock
0 pcs

Minimum:1

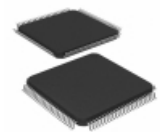
Multiples:100

Manufacturer lead time 10 weeks

We can supply MB90F867ESPMC-GS-AE1, use the request quote form to request MB90F867ESPMC-GS-AE1 price and lead time. Zeano is a professional electronic components distributor. With 3+ Million line items of available electronic components can ship in short lead-time, over 250 thousand part numbers of electronic components in stock for immediately delivery, which may include part number MB90F867ESPMC-GS-AE1. The price and lead time for MB90F867ESPMC-GS-AE1 depending on the quantity required and warehouse location. Contact us and our sales representative will provide you price. We look forward to work with you.

Shopping Process
1
Confirm the product
2
submit the order
3
payment
4
wait for delivery
5
receive the goods
Specifications

Voltage - Supply (Vcc/Vdd):	3.5 V ~ 5.5 V
Supplier Device Package:	100-LQFP (14x14)
Speed:	24MHz
Series:	F ² MC-16LX MB90860E
RAM Size:	6K x 8
Program Memory Type:	FLASH
Program Memory Size:	128KB (128K x 8)
Peripherals:	DMA, POR, WDT
Packaging:	Tray
Package / Case:	100-LQFP
Oscillator Type:	External
Operating Temperature:	-40°C ~ 105°C (TA)
Number of I/O:	82
EEPROM Size:	-
Data Converters:	A/D 24x8/10b
Core Size:	16-Bit
Core Processor:	F ² MC-16LX
Connectivity:	EBI/EMI, I ² C, LIN, SCI, UART/USART

Related products

MB90F867PMC-G

 IC MCU FLASH MICOM-0.35 100LQFP
[Cypress Semiconductor Corp](#)
RFQ
MB90F867ES

 in stock
[FUJITSU](#)
RFQ
MB90F867ESPFV

 in stock
[FUJITSU](#)
RFQ
MB90F867ESPF

 in stock
[FUJITSU](#)
RFQ

MB90F867PFR-G

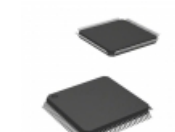
 IC MCU FLASH MICOM-0.35 100QFP
[Cypress Semiconductor Corp](#)
RFQ

MB90F867ESPMC-G-SN-YE1

 IC MCU 16BIT 128KB FLASH 100LQFP
[Cypress Semiconductor Corp](#)
RFQ
MB90F882

 in stock
[FUJITSU](#)
RFQ

MB90F867SPFR-G

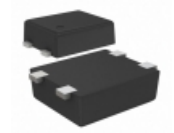
 IC MCU FLASH MICOM-0.35 100QFP
[Cypress Semiconductor Corp](#)
RFQ

MB90F867ESPMC-GS-ATLE1

 IC MCU 16BIT 128KB FLASH 100LQFP
[Cypress Semiconductor Corp](#)
RFQ

MB90F867ESPFV-GS-AE1

 IC MCU 16BIT 128KB FLASH 100LQFP
[Cypress Semiconductor Corp](#)
RFQ
Guess You May Looking For

ZXLD1601H6TA

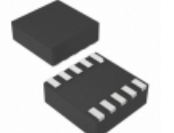
 IC LED DRIVER RGLTR 250MA SC70-6
[Diodes Incorporated](#)
RFQ

S-80817CLPF-B6CTFU

 IC VOLT DETECTOR 1.7V SNT-4A
[SII Semiconductor Corporation](#)
RFQ

MAX6720UTVHD3+T

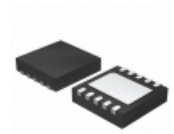
 IC SUPERVISOR MPU SOT23-6
[Maxim Integrated](#)
RFQ

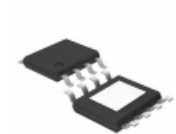
CAT706RZI-GT3

 IC SUPERVISOR CIRCUIT 8-MSOP
[ON Semiconductor](#)
RFQ

MAX16033PLB46+T

 IC BATTERY BACKUP 4.63V 10-UDFN
[Maxim Integrated](#)
RFQ

MP8761GL-P

 IC REG BUCK ADJ 8A SYNC
[Monolithic Power Systems Inc.](#)
RFQ

TS3312ITD1022

 IC REG BOOST ADJ SYNC 10TDFN
[Silicon Labs](#)
RFQ

BD9876AEFJ-E2

 IC REG BUCK ADJ 3A HTSOP8
[Rohm Semiconductor](#)
RFQ

S-13R1F22-N4T1U3

 IC REG LINEAR 2.2V 0.15A SC82AB
[SII Semiconductor Corporation](#)
RFQ

S-1206B18-M3T1G

 IC REG LINEAR 1.8V 0.25A SOT23-3
[SII Semiconductor Corporation](#)
RFQ

