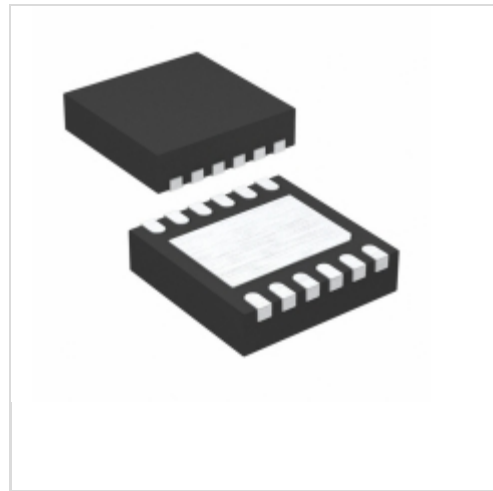


LT3652EDD#PBF



[Linear Technology / Analog Devices](#)

IC BATTERY CHARGER 12-DFN
Lead free / RoHS Compliant
Integrated Circuits (ICs)

[LT3652EDD#PBF.pdf](#)

Buy Now

Images are for reference only.

See Product Specifications for product details.

If you are interested to buy LT3652EDD#PBF,Just Email us.

Sales@zeanoit.com

our sales team will reply you within 24 hours

Out Stock

0 pcs

Minimum:1

Multiples:100

Manufacturer lead time 10 weeks

PRICE

1 pcs	\$6.53
25 pcs	\$4.36
100 pcs	\$3.70

Shopping Process

1

Confirm the product

2

submit the order

3

payment

4

wait for delivery

5

receive the goods

Specifications

Voltage - Supply (Max):	32V
Supplier Device Package:	12-DFN (3x3)
Series:	-
Programmable Features:	Current, Timer
Packaging:	Tube
Package / Case:	12-WDFDN Exposed Pad
Operating Temperature:	-40°C ~ 125°C (TJ)
Number of Cells:	-
Interface:	-
Fault Protection:	-
Current - Charging:	Constant - Programmable
Charge Current - Max:	2A
Battery Pack Voltage:	14.4V
Battery Chemistry:	Multi-Chemistry

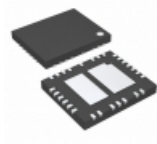
Related products



LT3651IUHE-8.4

[LT](#)

RFQ

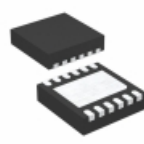


LT3651IUHE-8.2#PBF

IC CHRGMGMT LI-ION/LI-POL 36QFN

[Linear Technology](#)

RFQ

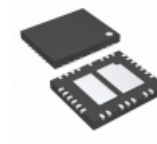


LT3652HVEDD#PBF

IC BATTERY CHARGER 2A 12-DFN

[Linear Technology](#)

RFQ

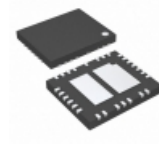


LT3651IUHE-8.2#TRPBF

IC CHRGMGMT LI-ION/LI-POL 36QFN

[Linear Technology](#)

RFQ

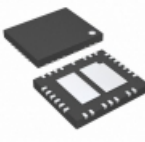


LT3651IUHE-8.4#TRPBF

IC CHRGMGMT LI-ION/LI-POL 36QFN

[Linear Technology](#)

RFQ

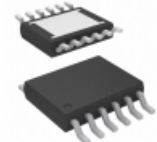


LT3651IUHE-8.4#PBF

IC CHRGMGMT LI-ION/LI-POL 36QFN

[Linear Technology](#)

RFQ



LT3652EMSE#PBF

IC BATTERY CHARGER SOLAR 12MSOP

[Linear Technology](#)

RFQ



LT3652EMSE#TRPBF

IC BATT CHARGER SOLAR 2A 12MSOP

[Linear Technology](#)

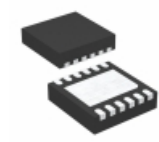
RFQ



LT3652EMSE

[LINEAR](#)

RFQ



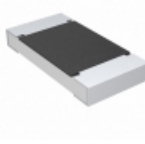
LT3652EDD#TRPBF

IC BATTERY CHARGER 2A 12DFN

[Linear Technology](#)

RFQ

Guess You May Looking For

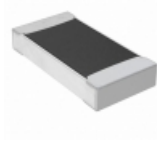


CRCW20104K70FKTF

RES SMD 4.7K OHM 1% 3/4W 2010

[Vishay Dale](#)

RFQ



RNCF1206BTE158R

RES SMD 158 OHM 0.1% 1/4W 1206

[Stackpole Electronics Inc.](#)

RFQ

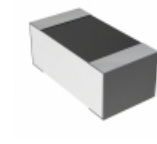


SMM02070C1050FBP00

RES SMD 105 OHM 1% 1W MELF

[Vishay Beyschlag](#)

RFQ



CPF0603B402KE

RES SMD 402K OHM 0.1% 1/16W 0603

[TE Connectivity Passive Product](#)

RFQ



RT0603CRC07698RL

RES SMD 698 OHM 0.25% 1/10W 0603

[Yageo](#)

RFQ



RT0805CRD0715RL

RES SMD 15 OHM 0.25% 1/8W 0805

[Yageo](#)

RFQ



RT0805CRD0753K6L

RES SMD 53.6KOHM 0.25% 1/8W 0805

[Yageo](#)

RFQ



RNCF2010DTE21R5

RES SMD 21.5 OHM 0.5% 1/3W 2010

[Stackpole Electronics Inc.](#)

RFQ



RNCF2010DTE6R65

RES SMD 6.65 OHM 0.5% 1/3W 2010

[Stackpole Electronics Inc.](#)

RFQ



RT1206BRD0716R2L

RES SMD 16.2 OHM 0.1% 1/4W 1206

[Yageo](#)

RFQ