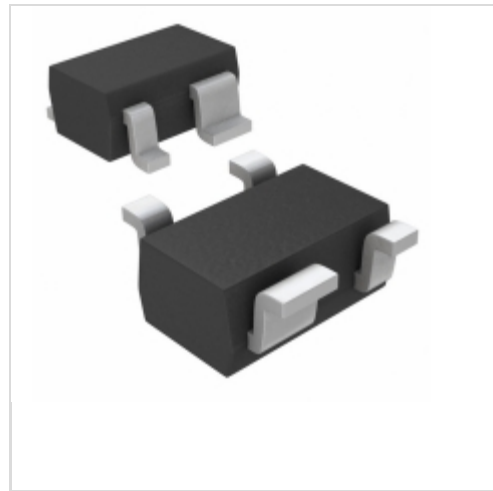


**MAX6388XS37D6-T**



**Maxim Integrated**  
IC MPU/RESET CIRC 3.70V SC70-4  
Contains lead / RoHS non-compliant  
Integrated Circuits (ICs)

- [1.MAX6388XS37D6-T.pdf](#)
- [2.MAX6388XS37D6-T.pdf](#)

[Buy Now](#)

We can supply Maxim Integrated MAX6388XS37D6-T, use the request quote form to request MAX6388XS37D6-T pirce, Maxim Integrated Datasheet PDF and lead time.Zeanoit.com is a professional electronic components distributor. With 3+ Million line items of available electronic components can ship in short lead-time, over 250 thousand part numbers of electronic components in stock for immediately delivery, which may include part number MAX6388XS37D6-T.The price and lead time for MAX6388XS37D6-T depending on the quantity required, availability and warehouse location.

Shopping Process

**1**

Confirm the product

**2**

submit the order

**3**

payment

**4**

wait for delivery

**5**

receive the goods

Specifications

<b>Voltage - Threshold:</b>	3.7V, Adj
<b>Type:</b>	Multi-Voltage Supervisor
<b>Supplier Device Package:</b>	SC-70-4
<b>Series:</b>	-
<b>Reset Timeout:</b>	560 ms Minimum
<b>Reset:</b>	Active High
<b>Packaging:</b>	Tape & Reel (TR)
<b>Package / Case:</b>	SC-82A, SOT-343
<b>Output:</b>	Push-Pull, Totem Pole
<b>Operating Temperature:</b>	-40°C ~ 125°C (TA)
<b>Number of Voltages Monitored:</b>	2
<b>Mounting Type:</b>	Surface Mount

Related products



**MAX6388XS37D4-T**  
in stock  
[MAXIM](#)

RFQ



**MAX6388XS38D2-T**  
IC MPU/RESET CIRC 3.80V SC70-4  
[Maxim Integrated](#)

RFQ



**MAX6388XS37D6-T**  
in stock  
[MAXIM](#)

RFQ



**MAX6388XS37D5-T**  
IC MPU/RESET CIRC 3.70V SC70-4  
[Maxim Integrated](#)

RFQ



**MAX6388XS37D7-T**  
in stock  
[MAXIM](#)

RFQ



**MAX6388XS37D5-T**  
in stock  
[MAXIM](#)

RFQ



**MAX6388XS38D1-T**  
in stock  
[MAXIM](#)

RFQ



**MAX6388XS37D4-T**  
IC MPU/RESET CIRC 3.70V SC70-4  
[Maxim Integrated](#)

RFQ



**MAX6388XS37D7-T**  
IC MPU/RESET CIRC 3.70V SC70-4  
[Maxim Integrated](#)

RFQ



**MAX6388XS38D1-T**  
IC MPU/RESET CIRC 3.80V SC70-4  
[Maxim Integrated](#)

RFQ

Guess You May Looking For



**9T04021A5360BAHF3**  
RES SMD 536 OHM 0.1% 1/16W 0402  
[Yageo](#)

RFQ



**RG2012P-2741-C-T5**  
RES SMD 2.74KOHM 0.25% 1/8W 0805  
[Susumu](#)

RFQ



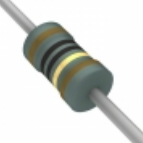
**RG3216N-1650-C-T5**  
RES SMD 165 OHM 0.25% 1/4W 1206  
[Susumu](#)

RFQ



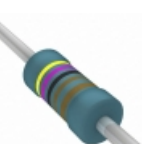
**H8825RBYA**  
RES 825 OHM 1/4W 0.1% AXIAL  
[TE Connectivity Passive Product](#)

RFQ



**RNF14FAD10R0**  
RES 10 OHM 1/4W 1% AXIAL  
[Stackpole Electronics Inc.](#)

RFQ



**MRS16000C4701FRP00**  
RES 4.7K OHM 0.4W 1% AXIAL  
[Vishay BC Components](#)

RFQ



**CMF6080K600FKEB**  
RES 80.6K OHM 1W 1% AXIAL  
[Vishay Dale](#)

RFQ



**RC14JB1M60**  
RES 1.6M OHM 1/4W 5% AXIAL  
[Stackpole Electronics Inc.](#)

RFQ



**MVM5JB1K20**  
RES 1.2K OHM 5W 5% CERAMIC VERT  
[Stackpole Electronics Inc.](#)

RFQ



**RNF14BTE287R**  
RES 287 OHM 1/4W .1% AXIAL  
[Stackpole Electronics Inc.](#)

RFQ