

## MC68336GCAB25



[NXP Semiconductors / Freescale](#)

IC MCU 32BIT ROMLESS 160QFP  
Lead free / RoHS Compliant  
Integrated Circuits (ICs)

[1.MC68336GCAB25.pdf](#)

[2.MC68336GCAB25.pdf](#)

**Buy Now**

Images are for reference only.

See Product Specifications for product details.

If you are interested to buy MC68336GCAB25, Just Email us.

Sales@zeanoit.com

our sales team will reply you within 24 hours

### Shopping Process

**1**

Confirm the product

**2**

submit the order

**3**

payment

**4**

wait for delivery

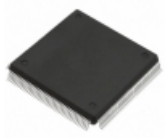
**5**

receive the goods

### Specifications

<b>Voltage - Supply (Vcc/Vdd):</b>	4.75 V ~ 5.25 V
<b>Supplier Device Package:</b>	160-QFP (28x28)
<b>Speed:</b>	25MHz
<b>Series:</b>	M683xx
<b>RAM Size:</b>	7.5K x 8
<b>Program Memory Type:</b>	ROMless
<b>Program Memory Size:</b>	-
<b>Peripherals:</b>	POR, PWM, WDT
<b>Packaging:</b>	Tray
<b>Package / Case:</b>	160-BQFP
<b>Oscillator Type:</b>	External
<b>Operating Temperature:</b>	-40°C ~ 85°C (TA)
<b>Number of I/O:</b>	18
<b>EEPROM Size:</b>	-
<b>Data Converters:</b>	A/D 16x10b
<b>Core Size:</b>	32-Bit
<b>Core Processor:</b>	CPU32
<b>Connectivity:</b>	CAN, EBI/EMI, SCI, SPI

### Related products



**MC68336GVAB25**

IC MCU 32BIT ROMLESS 160QFP  
[NXP USA Inc.](#)

RFQ



**MC68336GMAB2L**

[FREESCALE](#)

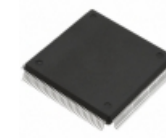
RFQ



**MC68336ACAB20**

IC MCU 32BIT ROMLESS 160QFP  
[NXP USA Inc.](#)

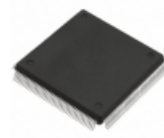
RFQ



**MC68336GCFT20**

IC MCU 32BIT ROMLESS 160QFP  
[NXP USA Inc.](#)

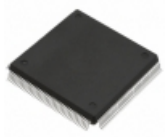
RFQ



**MC68336GMAB20**

IC MCU 32BIT ROMLESS 160QFP  
[NXP USA Inc.](#)

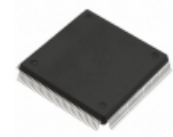
RFQ



**MC68336GVAB20**

IC MCU 32BIT ROMLESS 160QFP  
[NXP USA Inc.](#)

RFQ



**MC68336AMAB20**

IC MCU 32BIT ROMLESS 160QFP  
[NXP USA Inc.](#)

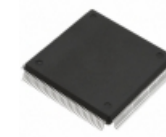
RFQ



**MC68336ACFT20**

IC MCU 32BIT ROMLESS 160QFP  
[NXP USA Inc.](#)

RFQ



**MC68336GCAB20**

IC MCU 32BIT ROMLESS 160QFP  
[NXP USA Inc.](#)

RFQ



**MC68336ACAB25**

IC MCU 32BIT ROMLESS 160QFP  
[NXP USA Inc.](#)

RFQ

### Guess You May Looking For



**VN920PEPTR-E**

IC DRIVER HIGH SIDE POWERSO24  
[STMicroelectronics](#)

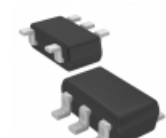
RFQ



**XC6124A217ER-G**

IC WATCHDOG TIMER 6-USP  
[Torex Semiconductor Ltd](#)

RFQ



**XC6124C728MR-G**

IC WATCHDOG TIMER SOT-25  
[Torex Semiconductor Ltd](#)

RFQ



**M40Z111MH6F**

IC SUPERVISOR NVRAM 5V 28SOIC  
[STMicroelectronics](#)

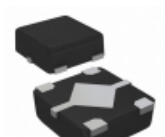
RFQ



**TLV431AILPRE3**

IC VREF SHUNT ADJ TO92-3  
[Texas Instruments](#)

RFQ



**S-1312D16-A4T2U3**

IC REG LINEAR 1.6V 0.15A HSNT-4  
[SII Semiconductor Corporation](#)

RFQ



**MIC5317-2.5YD5-T5**

IC REG LDO 2.5V 0.15A TSOT23-5  
[Microchip Technology](#)

RFQ



**S-1313D32-A4T1U3**

IC REG LINEAR 3.2V 0.2A HSNT-4  
[SII Semiconductor Corporation](#)

RFQ



**S-1335J10-M5T1U3**

IC REG LINEAR 1V 0.15A SOT23-5  
[SII Semiconductor Corporation](#)

RFQ