

TPS25200QDRVTTQ1


N/A
 IC PWR MGR EFUSE 6.5V 6SON
 Lead free / RoHS Compliant
 Integrated Circuits (ICs)

Buy Now

We can supply TPS25200QDRVTTQ1, use the request quote form to request TPS25200QDRVTTQ1 price, Datasheet PDF and lead time. Zeanoit.com is a professional electronic components distributor. With 3+ Million line items of available electronic components can ship in short lead-time, over 250 thousand part numbers of electronic components in stock for immediately delivery, which may include part number TPS25200QDRVTTQ1. The price and lead time for TPS25200QDRVTTQ1 depending on the quantity required, availability and warehouse location.

Out Stock
0 pcs

Minimum:1

Multiples:1

Manufacturer lead time 10 weeks

Shopping Process

1
Confirm the product
2
submit the order
3
payment
4
wait for delivery
5
receive the goods

Specifications

Voltage - Supply: 2.5 V ~ 6.5 V

Type: Hot Swap Controller

Series: Automotive, AEC-Q100

Programmable Features: Current Limit

Operating Temperature: -40°C ~ 125°C

Number of Channels: 1

Internal Switch(s): Yes

Features: Auto Retry, UVLO

Feature Pins: /Fault, ILIM

Current - Supply: -

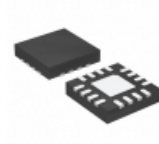
Current - Output (Max): 2.5A

Applications: General Purpose

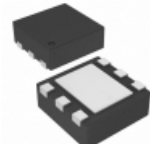
Related products


TPS2530DBVT
 IC PWR-DIST SW CURR-LMT SOT23-5
[N/A](#)

RFQ


TPS2540ARTER
 IC USB PWR SW/CTRLR CHRGR 16WQFN
[N/A](#)

RFQ


TPS25200DRVT
 IC PWR MGR EFUSE 6.5V 2.8A 6SON
[N/A](#)

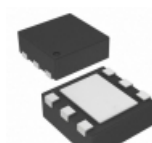
RFQ


TPS2530EVM-636
 EVAL MODULE FOR TPS2530-636
[N/A](#)

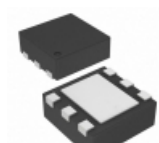
RFQ


TPS2540ARTERG4
[TEXAS](#)

RFQ


TPS25200DRVR
 IC HOT SWAP CTRLR GP 6-SON
[N/A](#)

RFQ


TPS25200QDRVTTQ1
 IC PWR MGR EFUSE 6.5V 6SON
[N/A](#)

RFQ


TPS2530DBVR
 IC PWR-DIST SW CURR-LMT SOT23-5
[N/A](#)

RFQ

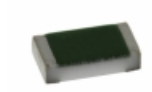

TPS2514DBVT
 IC USB PWR SW/CTRLR CHRGR SOT23-6
[N/A](#)

RFQ

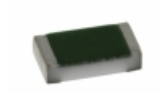

TPS25200EVM-618
 EVAL BOARD POWER SWITCH
 TPS25200
[N/A](#)

RFQ

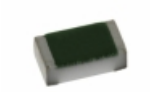
Guess You May Looking For


TNPW06033K09BETA
 RES SMD 3.09KOHM 0.1% 1/10W 0603
[Vishay Dale](#)

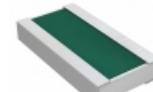
RFQ


TNPW06034K12BETA
 RES SMD 4.12KOHM 0.1% 1/10W 0603
[Vishay Dale](#)

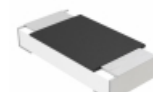
RFQ


TNPW040273K2BETD
 RES SMD 73.2KOHM 0.1% 1/16W 0402
[Vishay Dale](#)

RFQ


PRG3216P-4642-B-T5
 RES SMD 46.4K OHM 1W 1206 WIDE
[Susumu](#)

RFQ


MCA12060D1130BP100
 RES SMD 113 OHM 0.1% 1/4W 1206
[Vishay Beyschlag](#)

RFQ


MCA12060D2002BP100
 RES SMD 20K OHM 0.1% 1/4W 1206
[Vishay Beyschlag](#)

RFQ


MCA12060D1781BP100
 RES SMD 1.78K OHM 0.1% 1/4W 1206
[Vishay Beyschlag](#)

RFQ


RG1005P-2740-W-T5
 RES SMD 274 OHM 0.05% 1/16W 0402
[Susumu](#)

RFQ


RG1005P-4322-W-T5
 RES SMD 43.2K OHM 1/16W 0402
[Susumu](#)

RFQ


RT0603WRC0716K5L
 RES SMD 16.5K OHM 1/10W 0603
[Yageo](#)

RFQ