

AL5802LP4-7



Diodes Incorporated

IC LED DRVR LIN DIM X2-DFN1310-6

Lead free / RoHS Compliant

Integrated Circuits (ICs)

[AL5802LP4-7.pdf](#)

[Buy Now](#)

We can supply Diodes Incorporated AL5802LP4-7, use the request quote form to request AL5802LP4-7 price, Diodes Incorporated Datasheet PDF and lead time. Zeanoit.com is a professional electronic components distributor. With 3+ Million line items of available electronic components can ship in short lead-time, over 250 thousand part numbers of electronic components in stock for immediately delivery, which may include part number AL5802LP4-7. The price and lead time for AL5802LP4-7 depending on the quantity required, availability and warehouse location.

Out Stock

0 pcs

Minimum:1

Multiples:100

Manufacturer lead time 10 weeks

PRICE

| | |
|-----------|---------|
| 3000 pcs | \$0.171 |
| 6000 pcs | \$0.16 |
| 15000 pcs | \$0.149 |
| 30000 pcs | \$0.141 |

Shopping Process

1

Confirm the product

2

submit the order

3

payment

4

wait for delivery

5

receive the goods

Specifications

| | |
|------------------------------------|---------------------|
| Voltage - Supply (Min): | 4.5V |
| Voltage - Supply (Max): | 30V |
| Voltage - Output: | 30V |
| Type: | Linear |
| Topology: | - |
| Supplier Device Package: | X2-DFN1310-6 |
| Series: | - |
| Packaging: | Tape & Reel (TR) |
| Package / Case: | 6-XDFDN Exposed Pad |
| Operating Temperature: | -40°C ~ 125°C (TA) |
| Number of Outputs: | 1 |
| Mounting Type: | Surface Mount |
| Internal Switch(s): | Yes |
| Frequency: | - |
| Dimming: | PWM |
| Current - Output / Channel: | 100mA |
| Applications: | Signage |

Related products

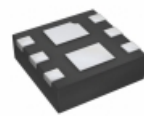


AL5802-7

IC LED DRVR LIN DIM 120MA SOT26

[Diodes Incorporated](#)

[RFQ](#)



AL5802LP-7

IC LED DRVR LIN DIM

[Diodes Incorporated](#)

[RFQ](#)



AL5809-100P1-7

IC LED DRVR LIN PWM 100MA PDI123

[Diodes Incorporated](#)

[RFQ](#)



AL5802LPL-7

IC LED DRVR LIN PWM U-DFN3030-6

[Diodes Incorporated](#)

[RFQ](#)

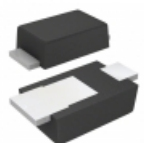


AL5801W6Q-7

IC LED DVR 100V ADJ SOT26

[Diodes Incorporated](#)

[RFQ](#)



AL5809-120P1-7

IC LED DRVR LIN PWM 120MA PDI12

[Diodes Incorporated](#)

[RFQ](#)



AL5801W6-7

IC LED DRVR LIN DIM 350MA SOT26

[Diodes Incorporated](#)

[RFQ](#)

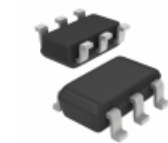


AL5802EV1

BOARD LED DRIVER

[Diodes Incorporated](#)

[RFQ](#)



AL5802QW6-7

IC LED DRVR LIN DIM 120MA SOT26

[Diodes Incorporated](#)

[RFQ](#)



AL5809-100QP1-7

IC LED DRVR LIN PWM 100MA PDI123

[Diodes Incorporated](#)

[RFQ](#)

Guess You May Looking For

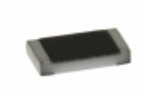


PAT0603E1380BST1

RES SMD 138 OHM 0.1% 0.15W 0603

[Vishay Thin Film](#)

[RFQ](#)

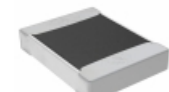


TNPW0805348RBEEN

RES SMD 348 OHM 0.1% 1/8W 0805

[Vishay Dale](#)

[RFQ](#)

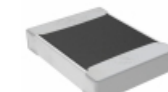


TNPW12105K10BEEA

RES SMD 5.1K OHM 0.1% 1/3W 1210

[Vishay Dale](#)

[RFQ](#)

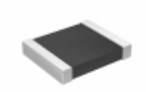


TNPW12104K87BETA

RES SMD 4.87K OHM 0.1% 1/3W 1210

[Vishay Dale](#)

[RFQ](#)



RT1210CRB0724R3L

RES SMD 24.3 OHM 0.25% 1/4W 1210

[Yageo](#)

[RFQ](#)

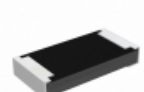


RT1206WRD071KL

RES SMD 1K OHM 0.05% 1/4W 1206

[Yageo](#)

[RFQ](#)

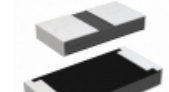


RCP1206B820RGEA

RES SMD 820 OHM 2% 11W 1206

[Vishay Dale](#)

[RFQ](#)



RCP1206W110RJE A

RES SMD 110 OHM 5% 11W 1206

[Vishay Dale](#)

[RFQ](#)

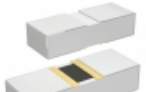


PTN1206E1650BST1

RES SMD 165 OHM 0.1% 0.4W 1206

[Vishay Thin Film](#)

[RFQ](#)



PHP00603E4480BBT1

RES SMD 448 OHM 0.1% 3/8W 0603

[Vishay Thin Film](#)

[RFQ](#)

