

**SLA7065M**



[Sanken Electric Co., Ltd.](#)

IC MOTOR BRIDGE PAR 21SIP

Lead free / RoHS Compliant

Integrated Circuits (ICs)

[1.SLA7065M.pdf](#)

[2.SLA7065M.pdf](#)

**Buy Now**

**Out Stock**

**0 pcs**

Minimum:1

Multiples:100

Manufacturer lead time 10 weeks

part#SLA7065M is available, see description of SLA7065M as below .

use the request quote form to request SLA7065M price and lead time.

Buy Electronic Components at zeanoit.com .we are an independent distributor of electronic components with extensive inventory in stock.

The price and lead time for SLA7065M depending on the quantity required, availability and warehouse location.Contact us today and our sales team will send you quotation soon.

Email: sales@zeanoit.com

Shopping Process

**1**

**Confirm the product**

**2**

**submit the order**

**3**

**payment**

**4**

**wait for delivery**

**5**

**receive the goods**

Specifications

<b>Voltage - Supply:</b>	3 V ~ 5.5 V
<b>Voltage - Load:</b>	10 V ~ 44 V
<b>Technology:</b>	NMOS
<b>Supplier Device Package:</b>	21-SIP
<b>Step Resolution:</b>	1, 1/2, 1/4, 1/8
<b>Series:</b>	-
<b>Packaging:</b>	Tube
<b>Package / Case:</b>	21-SSIP, Exposed Tab, Formed Lead
<b>Output Configuration:</b>	Half Bridge (2)
<b>Operating Temperature:</b>	-20°C ~ 125°C (TJ)
<b>Mounting Type:</b>	Through Hole
<b>Motor Type - Stepper:</b>	Unipolar
<b>Motor Type - AC, DC:</b>	Brushed DC
<b>Interface:</b>	Parallel
<b>Function:</b>	Driver - Fully Integrated, Control and Power Stage
<b>Current - Output:</b>	1A
<b>Applications:</b>	Printer

Related products



**SLA7066M**  
IC MOTOR BRIDGE PAR 21SIP  
[Sanken](#)

RFQ



**SLA7067M**  
IC MOTOR BRIDGE PAR 21SIP  
[Sanken](#)

RFQ



**SLA7061MB**  
[SANKEN](#)

RFQ



**SLA7070MPRT**  
IC MOTOR DRIVER PAR 23SLA  
[Sanken](#)

RFQ



**SLA7070MPR**  
IC MOTOR BRIDGE PAR 23SIP  
[Sanken](#)

RFQ



**SLA7060M**  
IC MOTOR BRIDGE PAR 21SIP  
[Sanken](#)

RFQ



**SLA7062M**  
IC MOTOR BRIDGE PAR 21SIP  
[Sanken](#)

RFQ



**SLA7070MR**  
IC MOTOR BRIDGE PAR 23SIP  
[Sanken](#)

RFQ



**SLA7052M**  
IC MOTOR BRIDGE PAR 18SIP  
[Sanken](#)

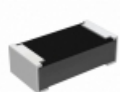
RFQ



**SLA7061M**  
IC MOTOR BRIDGE PAR 21SIP  
[Sanken](#)

RFQ

Guess You May Looking For



**RCP0603B620RJEA**  
RES SMD 620 OHM 5% 3.9W 0603  
[Vishay Dale](#)

RFQ



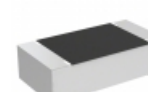
**RG1608V-1401-W-T5**  
RES SMD 1.4KOHM 0.05% 1/10W 0603  
[Susumu](#)

RFQ



**RG2012V-2670-W-T5**  
RES SMD 267 OHM 0.05% 1/8W 0805  
[Susumu](#)

RFQ



**TNPU0603732RBZEN00**  
RES SMD 732 OHM 0.1% 1/10W 0603  
[Vishay Dale](#)

RFQ



**S5-100RJ2**  
RES SMD 100 OHM 5% 4W 8230  
[Riedon](#)

RFQ



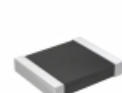
**RG1005V-2611-B-T5**  
RES SMD 2.61KOHM 0.1% 1/16W 0402  
[Susumu](#)

RFQ



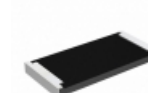
**RN73C2A115KBTG**  
RES SMD 115K OHM 0.1% 1/10W 0805  
[TE Connectivity Passive Product](#)

RFQ



**RT1210WRD07360RL**  
RES SMD 360 OHM 0.05% 1/4W 1210  
[Yageo](#)

RFQ



**RCP2512B82R0GEA**  
RES SMD 82 OHM 2% 22W 2512  
[Vishay Dale](#)

RFQ



**RG1608V-1270-P-T1**  
RES SMD 127 OHM 0.02% 1/10W 0603  
[Susumu](#)

RFQ

