

36103605



Würth Electronics

BOARD SHIELD 60X60MM SMD FRAME

Lead free / RoHS Compliant

RF/IF and RFID

[36103605.pdf](#)

Buy Now

In Stock

661 pcs

Minimum:1

Multiples:100

Manufacturer lead time 10 weeks

PRICE

1 pcs	\$7.75
10 pcs	\$7.235
50 pcs	\$6.854
100 pcs	\$6.283

Images are for reference only.

See Product Specifications for product details.

If you are interested to buy 36103605,Just Email us.

Sales@zeanoit.com

our sales team will reply you within 24 hours

Shopping Process



Confirm the product



submit the order



payment



wait for delivery



receive the goods

Specifications

Width - Overall:	2.402" (61.00mm)
Ventilation:	-
Type:	Frame
Series:	WE-SHC
Packaging:	Tray
Mounting Type:	Surface Mount
Length - Overall:	2.402" (61.00mm)
Height - Overall:	0.118" (3.00mm)

Related products



36105266S

WE-SHC SHIELDING CABINET 26.21 X
[Würth Electronics Inc.](#)

RFQ



36102C

FIXED IND 1UH 9.5A 7.5 MOHM SMD
[Murata Power Solutions Inc.](#)

RFQ



36106

TORXPLUS KEY L SHAPE IP6 1.5"
[Wiha](#)

RFQ



36107406S

WE-SHC SHIELDING CABINET 44.37 X
[Würth Electronics Inc.](#)

RFQ



36106326S

WE-SHC SHIELDING CABINET 32 X 32
[Würth Electronics Inc.](#)

RFQ



36103305

BOARD SHIELD 30X30MM SMD FRAME
[Würth Electronics Inc.](#)

RFQ



36103505

BOARD SHIELD 50X50MM SMD FRAME
[Würth Electronics Inc.](#)

RFQ



36103255

BOARD SHIELD 25X25MM SMD FRAME
[Würth Electronics Inc.](#)

RFQ



36103205

BOARD SHIELD 20X20MM SMD FRAME
[Würth Electronics Inc.](#)

RFQ

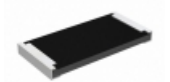


36107

TORXPLUS KEY L SHAPE IP7 1.7"
[Wiha](#)

RFQ

Guess You May Looking For



RCP2512B180RJEC

RES SMD 180 OHM 5% 22W 2512
[Vishay Dale](#)

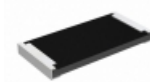
RFQ



RCP2512W220RGS2

RES SMD 220 OHM 2% 22W 2512
[Vishay Dale](#)

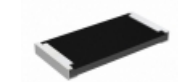
RFQ



RCP2512B68R0GS2

RES SMD 68 OHM 2% 22W 2512
[Vishay Dale](#)

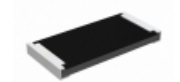
RFQ



RCP2512B43R0JEC

RES SMD 43 OHM 5% 22W 2512
[Vishay Dale](#)

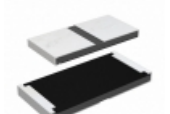
RFQ



RCP2512B240RGS2

RES SMD 240 OHM 2% 22W 2512
[Vishay Dale](#)

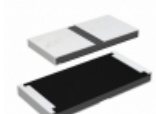
RFQ



RCP2512W51R0JS2

RES SMD 51 OHM 5% 22W 2512
[Vishay Dale](#)

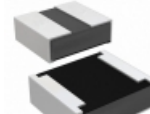
RFQ



RCP2512W220RJEC

RES SMD 220 OHM 5% 22W 2512
[Vishay Dale](#)

RFQ



RCP0505W330RGS2

RES SMD 330 OHM 2% 5W 0505
[Vishay Dale](#)

RFQ



HVCB2010JKL500K

RES SMD 500K OHM 5% 1W 2010
[Stackpole Electronics Inc.](#)

RFQ



RCP2512W39R0GEC

RES SMD 39 OHM 2% 22W 2512
[Vishay Dale](#)

RFQ