

IS61NLP51236-250TQLI

ISSI (Integrated Silicon Solution, Inc.)

IC SRAM 18MBIT 250MHZ 100TQFP

Lead free / RoHS Compliant

Integrated Circuits (ICs)

[1.IS61NLP51236-250TQLI.pdf](#)
[2.IS61NLP51236-250TQLI.pdf](#)

Images are for reference only.

See Product Specifications for product details.

If you are interested to buy IS61NLP51236-250TQLI,Just Email us.

Sales@zeanoit.com

our sales team will reply you within 24 hours

Shopping Process

1

Confirm the product

2

submit the order

3

payment

4

wait for delivery

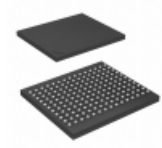
5

receive the goods

Specifications

Voltage - Supply:	3.135 V ~ 3.465 V
Supplier Device Package:	100-TQFP (14x20)
Speed:	250MHz
Series:	-
Packaging:	Tray
Package / Case:	100-LQFP
Operating Temperature:	-40°C ~ 85°C (TA)
Memory Type:	Volatile
Memory Size:	18Mb (512K x 36)
Memory Format:	SRAM
Interface:	Parallel

Related products


IS61NLP51236B-200B3LI-TR

IC SRAM 18MBIT 200MHZ 165BGA

[ISSI, Integrated Silicon Solution Inc](#)

RFQ


IS61NLP51236-250TQI

in stock

[ISSI](#)

RFQ


IS61NLP51236-250TQLI-TR

IC SRAM 18MBIT 250MHZ 100TQFP

[ISSI, Integrated Silicon Solution Inc](#)

RFQ


IS61NLP51236-250B3

in stock

[ISSI](#)

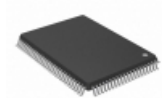
RFQ


IS61NLP51236-250B3I

in stock

[ISSI](#)

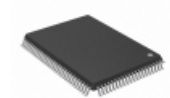
RFQ


IS61NLP51236B-200TQLI

IC SRAM 18MBIT 200MHZ 100TQFP

[ISSI, Integrated Silicon Solution Inc](#)

RFQ


IS61NLP51236B-200TQLI-TR

IC SRAM 18MBIT 200MHZ 100TQFP

[ISSI, Integrated Silicon Solution Inc](#)

RFQ


IS61NLP51236-250TQ

in stock

[ISSI](#)

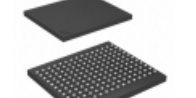
RFQ


IS61NLP51236-200TQLI-TR

IC SRAM 18MBIT 200MHZ 100TQFP

[ISSI, Integrated Silicon Solution Inc](#)

RFQ

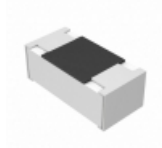

IS61NLP51236B-200B3LI

IC SRAM 18MBIT 200MHZ 165BGA

[ISSI, Integrated Silicon Solution Inc](#)

RFQ

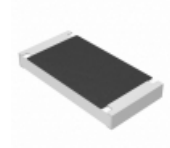
Guess You May Looking For


ERJ-1GEF6800C

RES SMD 680 OHM 1% 1/20W 0201

[Panasonic Electronic Components](#)

RFQ


ERJ-12ZYJ161U

RES SMD 160 OHM 5% 3/4W 2010

[Panasonic Electronic Components](#)

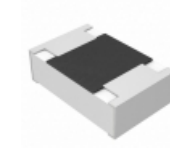
RFQ


PWR2010WR500JE

RES SMD 0.5 OHM 5% 1/2W 2010

[Bourns Inc.](#)

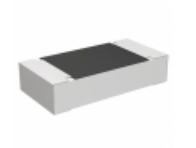
RFQ


ERJ-6GEYJ473V

RES SMD 47K OHM 5% 1/8W 0805

[Panasonic Electronic Components](#)

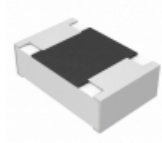
RFQ


ERA-8APB182V

RES SMD 1.8K OHM 0.1% 1/4W 1206

[Panasonic Electronic Components](#)

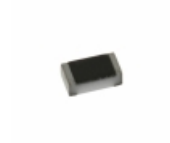
RFQ


ERJ-P6WF9311V

RES SMD 9.31K OHM 1% 1/2W 0805

[Panasonic Electronic Components](#)

RFQ


CRCW04023R24FKED

RES SMD 3.24 OHM 1% 1/16W 0402

[Vishay Dale](#)

RFQ


RNCF0805DKE187R

RES SMD 187 OHM 0.5% 1/8W 0805

[Stackpole Electronics Inc.](#)

RFQ


RNCF0201DTC422R

RES SMD 422 OHM 0.5% 1/32W 0201

[Stackpole Electronics Inc.](#)

RFQ


RNCF1206DTE280K

RES SMD 280K OHM 0.5% 1/4W 1206

[Stackpole Electronics Inc.](#)

RFQ