

## MIC4425CWM TR



### Microchip Technology

IC DRIVER MOSFET 3A DUAL 16-SOIC  
 Contains lead / RoHS non-compliant  
 Integrated Circuits (ICs)

[MIC4425CWM TR.pdf](#)

[Buy Now](#)

Images are for reference only.

See Product Specifications for product details.

If you are interested to buy MIC4425CWM TR, Just Email us.

Sales@zeanoit.com

our sales team will reply you within 24 hours

### Shopping Process

1

Confirm the product

2

submit the order

3

payment

4

wait for delivery

5

receive the goods

### Specifications

<b>Voltage - Supply:</b>	4.5 V ~ 18 V
<b>Supplier Device Package:</b>	16-SOIC
<b>Series:</b>	-
<b>Rise / Fall Time (Typ):</b>	28ns, 32ns
<b>Packaging:</b>	Tape & Reel (TR)
<b>Package / Case:</b>	16-SOIC (0.295", 7.50mm Width)
<b>Operating Temperature:</b>	0°C ~ 150°C (TJ)
<b>Number of Drivers:</b>	2
<b>Mounting Type:</b>	Surface Mount
<b>Logic Voltage - VIL, VIH:</b>	0.8V, 2.4V
<b>Input Type:</b>	Inverting, Non-Inverting
<b>Gate Type:</b>	N-Channel, P-Channel MOSFET
<b>Driven Configuration:</b>	Low-Side
<b>Current - Peak Output (Source, Sink):</b>	3A, 3A
<b>Channel Type:</b>	Independent

### Related products



**MIC4425BN**  
 IC DRIVER MOSFET 3A DUAL 8DIP  
[Microchip Technology](#)

RFQ



**MIC4425YN**  
 IC DRIVER MOSFET 3A DUAL 8DIP  
[Microchip Technology](#)

RFQ



**MIC4425CN**  
 IC DRIVER MOSFET 3A DUAL 8-DIP  
[Microchip Technology](#)

RFQ



**MIC4425YM-TR**  
 IC DRIVER MOSFET 3A DUAL 8-SOIC  
[Microchip Technology](#)

RFQ



**MIC4425YWM-TR**  
 IC DRIVER MOSFET 3A DUAL 16-SOIC  
[Microchip Technology](#)

RFQ



**MIC4425BWM**  
 IC DRIVER MOSFET 3A DUAL 16-SOIC  
[Microchip Technology](#)

RFQ



**MIC4425YWM**  
 IC DRIVER MOSFET 3A DUAL 16-SOIC  
[Microchip Technology](#)

RFQ



**MIC4425YM**  
 IC DRIVER MOSFET 3A DUAL 8-SOIC  
[Microchip Technology](#)

RFQ



**MIC4425BWM TR**  
 IC DRIVER MOSFET 3A DUAL 16-SOIC  
[Microchip Technology](#)

RFQ



**MIC4425CWM**  
 IC DRIVER MOSFET 3A DUAL 16-SOIC  
[Microchip Technology](#)

RFQ

### Guess You May Looking For



**AA2512FK-0727KL**  
 RES SMD 27K OHM 1% 1W 2512  
[Yageo](#)

RFQ



**RNCF1206DKT100K**  
 RES SMD 100K OHM 0.5% 1/4W 1206  
[Stackpole Electronics Inc.](#)

RFQ



**RNCF2010BTE38R3**  
 RES SMD 38.3 OHM 0.1% 1/3W 2010  
[Stackpole Electronics Inc.](#)

RFQ



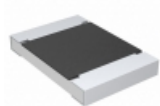
**RNCF1210DTC3R57**  
 RES SMD 3.57 OHM 0.5% 1/4W 1210  
[Stackpole Electronics Inc.](#)

RFQ



**ERA-3ARB1241V**  
 RES SMD 1.24KOHM 0.1% 1/10W 0603  
[Panasonic Electronic Components](#)

RFQ



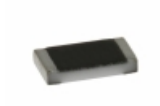
**CRCW12184R64FKEK**  
 RES SMD 4.64 OHM 1% 1W 1218  
[Vishay Dale](#)

RFQ



**TNPW08051K07BEEA**  
 RES SMD 1.07K OHM 0.1% 1/8W 0805  
[Vishay Dale](#)

RFQ



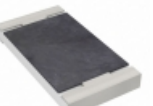
**TNPW080556K0BEEA**  
 RES SMD 56K OHM 0.1% 1/8W 0805  
[Vishay Dale](#)

RFQ



**RNCF2512BTC147K**  
 RES SMD 147K OHM 0.1% 1/2W 2512  
[Stackpole Electronics Inc.](#)

RFQ



**PE2010FKF7W0R08L**  
 RES SMD 0.08 OHM 1% 1W 2010  
[Yageo](#)

RFQ