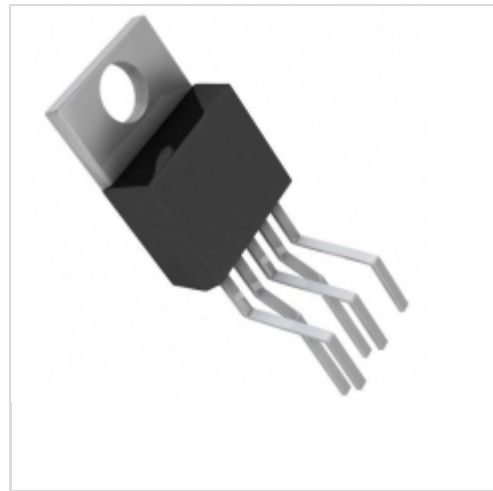


BTS436L2

International Rectifier (Infineon Technologies)

IC HIGH SIDE PWR SWITCH TO220-5

Contains lead / RoHS non-compliant

Integrated Circuits (ICs)

[BTS436L2.pdf](#)

We can supply International Rectifier (Infineon Technologies) BTS436L2, use the request quote form to request BTS436L2 price, International Rectifier (Infineon Technologies) Datasheet PDF and lead time. Zeano.com is a professional electronic components distributor. With 3+ Million line items of available electronic components can ship in short lead-time, over 250 thousand part numbers of electronic components in stock for immediately delivery, which may include part number BTS436L2. The price and lead time for BTS436L2 depending on the quantity required, availability and warehouse location.

Shopping Process


1
Confirm the product

2
submit the order

3
payment

4
wait for delivery

5
receive the goods

Specifications

Voltage - Supply (Vcc/Vdd):	Not Required
Voltage - Load:	4.75 V ~ 41 V
Switch Type:	General Purpose
Supplier Device Package:	P-TO220-5
Series:	PROFET®
Rds On (Typ):	35 mOhm
Ratio - Input:Output:	1:1
Packaging:	Tube
Package / Case:	TO-220-5 Formed Leads
Output Type:	N-Channel
Output Configuration:	High Side
Operating Temperature:	-40°C ~ 150°C (TJ)
Number of Outputs:	1
Interface:	On/Off
Input Type:	Non-Inverting
Features:	Status Flag
Fault Protection:	Current Limiting (Fixed), Open Load Detect, Over Temperature, Over Voltage
Current - Output (Max):	8.8A

Related products


BTS436L2GATMA1
IC HIGH SIDE PWR SWITCH TO263-5
[Infineon Technologies](#)

RFQ


BTS432I2E3122A
[Infineon](#)

RFQ


BTS441RG
IC HIGH SIDE PWR SWITCH D2PAK-5
[Infineon Technologies](#)

RFQ


BTS432I2
[INF](#)

RFQ


BTS432I1
[INFINEON](#)

RFQ


BTS432I2 E3062A
[INFINEON](#)

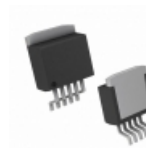
RFQ


BTS436L2S
IC HIGH SIDE PWR SWITCH TO220-5
[Infineon Technologies](#)

RFQ


BTS432I2 E3043
[INFINEON](#)

RFQ


BTS436L2G
IC HIGH SIDE PWR SWITCH D2PAK-5
[Infineon Technologies](#)

RFQ


BTS441R
[INFINEON](#)

RFQ

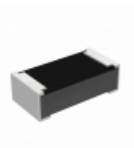
Guess You May Looking For


RW1S0BAR100JT
RES SMD 0.1 OHM 5% 1W J LEAD
[Ohmite](#)

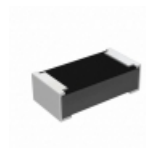
RFQ


NPS2T-250RF1
RES SMD 250 OHM 1% 25W TO126
[Riedon](#)

RFQ


RCP0603B47R0GED
RES SMD 47 OHM 2% 3.9W 0603
[Vishay Dale](#)

RFQ


RCP0603B910RGED
RES SMD 910 OHM 2% 3.9W 0603
[Vishay Dale](#)

RFQ


M55342E06B402ARWS
RES SMD 402 OHM 0.1% 0.15W 0705
[Vishay Dale](#)

RFQ


M55342E05B10E0RWS
RES SMD 10K OHM 1% 0.225W 2208
[Vishay Dale](#)

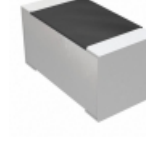
RFQ


M55342H06B39B9RWS
RES SMD 39.9KOHM 0.1% 0.15W 0805
[Vishay Dale](#)

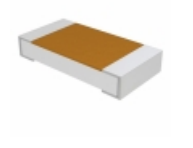
RFQ


M55342H06B75D0RWS
RES SMD 75 OHM 1% 0.15W 0705
[Vishay Dale](#)

RFQ


M55342E12B68B0RBS
RES SMD 68K OHM 0.1% 1/10W 0603
[Vishay Dale](#)

RFQ


D55342E07B24B3RTI
RES SMD 24.3K OHM 0.1% 1/4W 1206
[Vishay Dale](#)

RFQ