

UCC2818APW



N/A
 IC PFC CTRL AVERAGE CURR 16TSSOP
 Lead free / RoHS Compliant
 Integrated Circuits (ICs)

Buy Now

We can supply UCC2818APW, use the request quote form to request UCC2818APW price, Datasheet PDF and lead time. Zeanoit.com is a professional electronic components distributor. With 3+ Million line items of available electronic components can ship in short lead-time, over 250 thousand part numbers of electronic components in stock for immediately delivery, which may include part number UCC2818APW. The price and lead time for UCC2818APW depending on the quantity required, availability and warehouse location.

In Stock

180 pcs

Minimum:1

Multiples:1

Manufacturer lead time 10 weeks

PRICE

1 pcs	\$3.46
10 pcs	\$3.106
100 pcs	\$2.545
500 pcs	\$2.166
1000 pcs	\$1.827

Shopping Process



Confirm the product



submit the order



payment



wait for delivery



receive the goods

Specifications

Voltage - Supply:	12 V ~ 17 V
Supplier Device Package:	16-TSSOP
Series:	-
Packaging:	Tube
Package / Case:	16-TSSOP (0.173", 4.40mm Width)
Operating Temperature:	-40°C ~ 85°C
Mounting Type:	Surface Mount
Mode:	Average Current
Frequency - Switching:	6kHz ~ 220kHz
Current - Startup:	150µA

Related products



UCC2818AQDRQ1
 IC PFC CTRLR AVERAGE CURR 16SOIC
[N/A](#)

RFQ



UCC2818APWR
 IC PFC CTRL AVERAGE CURR 16TSSOP
[N/A](#)

RFQ



UCC2818D
 IC PFC CTRLR AVERAGE CURR 16SOIC
[N/A](#)

RFQ



UCC2818ANG4
 IC PFC CTRLR AVERAGE CURR 16DIP
[N/A](#)

RFQ



UCC2818AN
 IC PFC CTRLR AVERAGE CURR 16DIP
[N/A](#)

RFQ



UCC2818APWG4
 IC PFC CTRL AVERAGE CURR 16TSSOP
[N/A](#)

RFQ



UCC2818ADR/1
 in stock
[N/A](#)

RFQ



UCC2818ADRG4
 IC PFC CTRLR AVERAGE CURR 16SOIC
[N/A](#)

RFQ



UCC2818APWRG4
 IC PFC CTRL AVERAGE CURR 16TSSOP
[N/A](#)

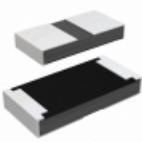
RFQ



UCC2818ADR
 IC PFC CTRLR AVERAGE CURR 16SOIC
[N/A](#)

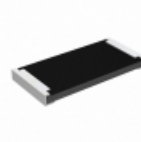
RFQ

Guess You May Looking For



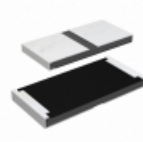
RCP1206W43R0JEC
 RES SMD 43 OHM 5% 11W 1206
[Vishay Dale](#)

RFQ



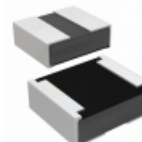
RCP2512B22R0GEB
 RES SMD 22 OHM 2% 22W 2512
[Vishay Dale](#)

RFQ



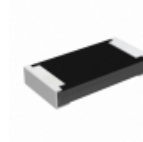
RCP2512W15R0JS3
 RES SMD 15 OHM 5% 22W 2512
[Vishay Dale](#)

RFQ



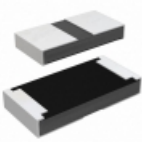
RCP0505W820RJS2
 RES SMD 820 OHM 5% 5W 0505
[Vishay Dale](#)

RFQ



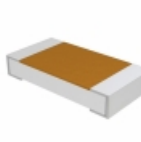
RCP1206B100RGEC
 RES SMD 100 OHM 2% 11W 1206
[Vishay Dale](#)

RFQ



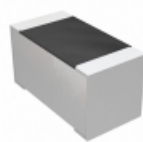
RCP1206W130RGEC
 RES SMD 130 OHM 2% 11W 1206
[Vishay Dale](#)

RFQ



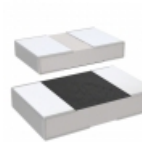
D55342E07B3B74PT1
 RES SMD 3.74K OHM 0.1% 1/4W 1206
[Vishay Dale](#)

RFQ



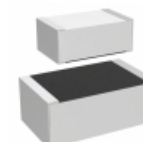
M55342H12B2E49PT5
 RES SMD 2.49K OHM 1% 1/10W 0603
[Vishay Dale](#)

RFQ



M55342H11B3E32RT5
 RES SMD 3.32K OHM 1% 1/20W 0402
[Vishay Dale](#)

RFQ



M55342H06B105BRT5
 RES SMD 105K OHM 0.1% 0.15W 0705
[Vishay Dale](#)

RFQ