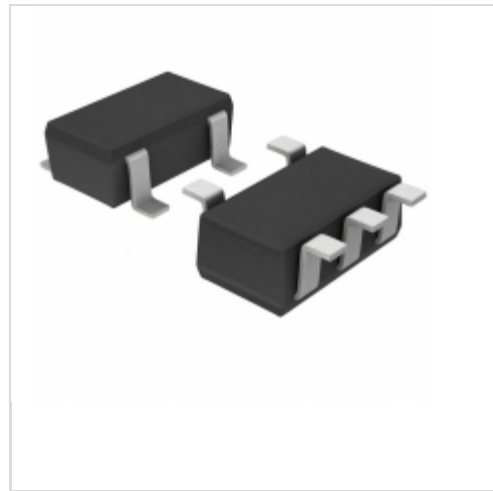


BU4341G-TR

LAPIS Semiconductor

IC DETECTOR VOLT 4.1V CMOS 5SSOP

Lead free / RoHS Compliant

Integrated Circuits (ICs)

[BU4341G-TR.pdf](#)
Buy Now
Out Stock
0 pcs

Minimum:1

Multiples:100

Manufacturer lead time 10 weeks

We can supply BU4341G-TR, use the request quote form to request BU4341G-TR price and lead time. Zeano is a professional electronic components distributor. With 3+ Million line items of available electronic components can ship in short lead-time, over 250 thousand part numbers of electronic components in stock for immediately delivery, which may include part number BU4341G-TR. The price and lead time for BU4341G-TR depending on the quantity required and warehouse location. Contact us and our sales representative will provide you price. We look forward to work with you.

Shopping Process

1
Confirm the product
2
submit the order
3
payment
4
wait for delivery
5
receive the goods

Specifications

Voltage - Threshold:	4.1V
Type:	Simple Reset/Power-On Reset
Supplier Device Package:	5-SSOP
Series:	-
Reset Timeout:	Adjustable/Selectable
Reset:	Active Low
Packaging:	Tape & Reel (TR)
Package / Case:	SC-74A, SOT-753
Output:	Push-Pull, Totem Pole
Operating Temperature:	-40°C ~ 125°C (TA)
Number of Voltages Monitored:	1
Mounting Type:	Surface Mount

Related products


BU4340F-TR
 IC DETECTOR VOLT 4.0V CMOS 4SOP
[Rohm Semiconductor](#)

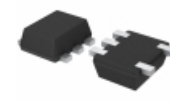
RFQ


BU4342FVE-TR
 IC DETECTOR VOLT 4.2V CMOS 5VSOF
[Rohm Semiconductor](#)

RFQ


BU4343F-TR
 IC DETECTOR VOLT 4.3V CMOS 4SOP
[Rohm Semiconductor](#)

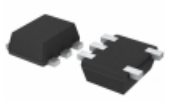
RFQ


BU4341FVE-TR
 IC DETECTOR VOLT 4.1V CMOS 5VSOF
[Rohm Semiconductor](#)

RFQ


BU4342G-TR
 IC DETECTOR VOLT 4.2V CMOS 5SSOP
[Rohm Semiconductor](#)

RFQ


BU4340FVE-TR
 IC DETECTOR VOLT 4.0V CMOS 5VSOF
[Rohm Semiconductor](#)

RFQ


BU4342F-TR
 IC DETECTOR VOLT 4.2V CMOS 4SOP
[Rohm Semiconductor](#)

RFQ


BU4341F-TR
 IC DETECTOR VOLT 4.1V CMOS 4SOP
[Rohm Semiconductor](#)

RFQ


BU4343FVE-TR
 IC DETECTOR VOLT 4.3V CMOS 5VSOF
[Rohm Semiconductor](#)

RFQ


BU4340G-TR
 IC DETECTOR VOLT 4.0V CMOS 5SSOP
[Rohm Semiconductor](#)

RFQ

Guess You May Looking For


RG2012N-683-C-T5
 RES SMD 68K OHM 0.25% 1/8W 0805
[Susumu](#)

RFQ


WSH2818R0600FEA
 RES SMD 0.06 OHM 1% 5W 2818
[Vishay Dale](#)

RFQ


EXB-D10C684J
 RES ARRAY 8 RES 680K OHM 1206
[Panasonic Electronic Components](#)

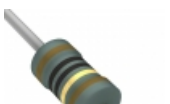
RFQ


YC124-FR-077R5L
 RES ARRAY 4 RES 7.5 OHM 0804
[Yageo](#)

RFQ


CFM14JT470R
 RES 470 OHM 1/4W 5% CF MINI
[Stackpole Electronics Inc.](#)

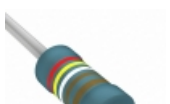
RFQ


RNF12FTC10R0
 RES 10 OHM 1/2W 1% AXIAL
[Stackpole Electronics Inc.](#)

RFQ


MBA02040C1472FRP00
 RES 14.7K OHM 0.4W 1% AXIAL
[Vishay BC Components](#)

RFQ


MBA02040C2491FCT00
 RES 2.49K OHM 0.4W 1% AXIAL
[Vishay BC Components](#)

RFQ


RN55D9421FB14
 RES 9.42K OHM 1/8W 1% AXIAL
[Vishay Dale](#)

RFQ


CMF559K5300FKEB
 RES 9.53K OHM 1/2W 1% AXIAL
[Vishay Dale](#)

RFQ