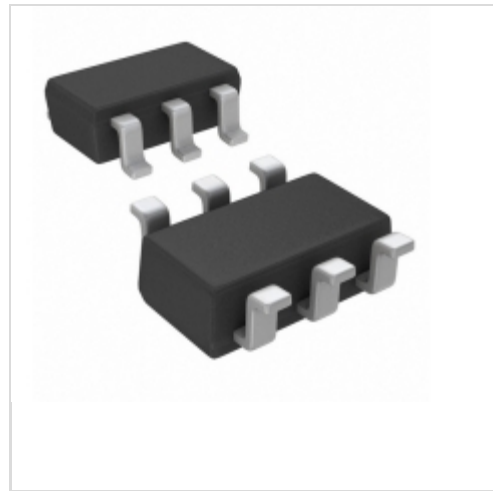


NCP1602ABASNT1G



[AMI Semiconductor / ON Semiconductor](#)

IC PFC CONTROLLER CRM 6TSOP

Lead free / RoHS Compliant

Integrated Circuits (ICs)

[NCP1602ABASNT1G.pdf](#)

[Buy Now](#)

We can supply NCP1602ABASNT1G, use the request quote form to request NCP1602ABASNT1G price and lead time. Zeano is a professional electronic components distributor. With 3+ Million line items of available electronic components can ship in short lead-time, over 250 thousand part numbers of electronic components in stock for immediately delivery, which may include part number NCP1602ABASNT1G. The price and lead time for NCP1602ABASNT1G depending on the quantity required and warehouse location. Contact us and our sales representative will provide you price. We look forward to work with you.

Out Stock

0 pcs

Minimum: 1

Multiples: 100

Manufacturer lead time 10 weeks

Shopping Process

1

Confirm the product

2

submit the order

3

payment

4

wait for delivery

5

receive the goods

Specifications

Voltage - Supply:	9.5 V ~ 30 V
Supplier Device Package:	6-TSOP
Series:	-
Packaging:	Tape & Reel (TR)
Package / Case:	SOT-23-6 Thin, TSOT-23-6
Operating Temperature:	-40°C ~ 125°C
Mounting Type:	Surface Mount
Mode:	Continuous Conduction (CCM)
Frequency - Switching:	-
Current - Startup:	480µA

Related products

molex

NCP1603D100G

[ON](#)

[RFQ](#)



NCP1601BP

IC CTRLR PFC FREQ DCM/CRM 8DIP

[ON Semiconductor](#)

[RFQ](#)

molex

NCP1601BR2G

[ON](#)

[RFQ](#)

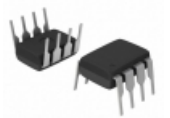


NCP1602BOOSTGEVB

EVAL BOARD NCP1602BOOSTG

[ON Semiconductor](#)

[RFQ](#)



NCP1601BPG

IC PFC CTRLR CRM/TRANSITION 8DIP

[ON Semiconductor](#)

[RFQ](#)



NCP1601BDR2

IC CTRLR PFC FREQ DCM/CRM 8SOIC

[ON Semiconductor](#)

[RFQ](#)



NCP1603D100R2

IC CTRLR PFC/PWM HV START 16SOIC

[ON Semiconductor](#)

[RFQ](#)



NCP1602BEASNT1G

IC PFC CONTROLLER CRM 6TSOP

[ON Semiconductor](#)

[RFQ](#)

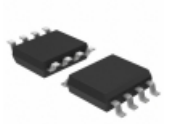


NCP1602AEASNT1G

IC PFC CONTROLLER CRM 6TSOP

[ON Semiconductor](#)

[RFQ](#)



NCP1601BDR2G

IC PFC CTRL CRM/TRANSITION 8SOIC

[ON Semiconductor](#)

[RFQ](#)

Guess You May Looking For



RG2012V-5901-P-T1

RES SMD 5.9K OHM 0.02% 1/8W 0805

[Susumu](#)

[RFQ](#)

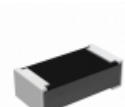


M55342K06B4B02RT1

RES SMD 4.02KOHM 0.1% 0.15W 0805

[Vishay Dale](#)

[RFQ](#)



RCP0603B470RGEC

RES SMD 470 OHM 2% 3.9W 0603

[Vishay Dale](#)

[RFQ](#)

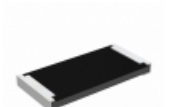


PFC10-2K2F1

RES SMD 2.2K OHM 1% 25W PFC10

[Riedon](#)

[RFQ](#)

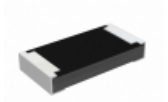


RCP2512B1K80JEB

RES SMD 1.8K OHM 5% 22W 2512

[Vishay Dale](#)

[RFQ](#)



RCP1206B330RGEC

RES SMD 330 OHM 2% 11W 1206

[Vishay Dale](#)

[RFQ](#)

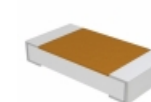


PWR163S-25-R075J

RES SMD 0.075 OHM 5% 25W DPAK

[Bourns Inc.](#)

[RFQ](#)



TNPU1206191RAZEN00

RES SMD 191 OHM 0.05% 1/4W 1206

[Vishay Dale](#)

[RFQ](#)

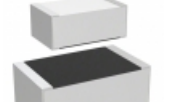


RCP0603W56R0GS2

RES SMD 56 OHM 2% 3.9W 0603

[Vishay Dale](#)

[RFQ](#)



M55342H06B15E0RT5

RES SMD 15K OHM 1% 0.15W 0705

[Vishay Dale](#)

[RFQ](#)