

2U3836L30QDBVRG4Q1



N/A  
IC SUPERVISOR CIRCUIT SOT23-5  
Lead free / RoHS Compliant  
Integrated Circuits (ICs)



Buy Now

**Out Stock**  
**0 pcs**  
Minimum:1  
Multiples:1  
Manufacturer lead time 10 weeks

We can supply 2U3836L30QDBVRG4Q1, use the request quote form to request 2U3836L30QDBVRG4Q1 pirce and lead time.Zeano is a professional electronic components distributor. With 3+ Million line items of available electronic components can ship in short lead-time, over 250 thousand part numbers of electronic components in stock for immediately delivery, which may include part number 2U3836L30QDBVRG4Q1.The price and lead time for 2U3836L30QDBVRG4Q1 depending on the quantity required and warehouse location.contact us and our sales representative will provide you price. We look forward to work with you.

Shopping Process

1

Confirm the product

2

submit the order

3

payment

4

wait for delivery

5

receive the goods

Specifications

<b>Voltage - Threshold:</b>	2.64V
<b>Type:</b>	Simple Reset/Power-On Reset
<b>Supplier Device Package:</b>	SOT-23-5
<b>Series:</b>	Automotive, AEC-Q100
<b>Reset Timeout:</b>	100 ms Minimum
<b>Reset:</b>	Active Low
<b>Packaging:</b>	Tape & Reel (TR)
<b>Package / Case:</b>	SC-74A, SOT-753
<b>Output:</b>	Push-Pull, Totem Pole
<b>Operating Temperature:</b>	-40°C ~ 125°C (TA)
<b>Number of Voltages Monitored:</b>	1
<b>Mounting Type:</b>	Surface Mount

Related products



**2U3838E18QDBVRG4Q1**  
IC SUPERVISOR CIRCUIT SOT23-5  
[N/A](#)

RFQ



**2U3836K33QDBVRG4Q1**  
IC SUPERVISOR CIRCUIT SOT23-5  
[N/A](#)

RFQ



**2U3837K33QDBVRG4Q1**  
IC SUPERVISORY CIRCUIT SOT23-5  
[N/A](#)

RFQ



**2U3836E18QDBVRG4Q1**  
IC LP SUPERVISRY CIRCUIT SOT23-5  
[N/A](#)

RFQ



**2U3837J25QDBVRG4Q1**  
IC SUPERVISOR CIRCUIT SOT23-5  
[N/A](#)

RFQ



**2U3825-33QDBVRG4Q1**  
IC SUPERVISOR CIRCUIT SOT23-5  
[N/A](#)

RFQ



**2U3836H30QDBVRG4Q1**  
IC SUPERVISOR CIRCUIT SOT23-5  
[N/A](#)

RFQ



**2U3836J25QDBVRG4Q1**  
IC SUPERVISORY CIRCUIT SOT23-5  
[N/A](#)

RFQ



**2U3837L30QDBVRG4Q1**  
IC SUPERVISOR CIRCUIT SOT23-5  
[N/A](#)

RFQ



**2U3837E18QDBVRG4Q1**  
IC SUPERVISOR CIRCUIT SOT23-5  
[N/A](#)

RFQ

Guess You May Looking For



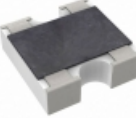
**9T12062A9311FBHFT**  
RES SMD 9.31K OHM 1% 1/8W 1206  
[Yageo](#)

RFQ



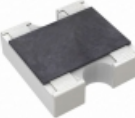
**RG3216P-1301-P-T1**  
RES SMD 1.3K OHM 0.02% 1/4W 1206  
[Susumu](#)

RFQ



**YC122-FR-0768RL**  
RES ARRAY 2 RES 68 OHM 0404  
[Yageo](#)

RFQ



**YC162-FR-0730K9L**  
RES ARRAY 2 RES 30.9K OHM 0606  
[Yageo](#)

RFQ



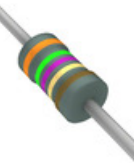
**752123332GPTR7**  
RES ARRAY 6 RES 3.3K OHM 12SRT  
[CTS Resistor Products](#)

RFQ



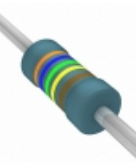
**45J1K5E**  
RES 1.5K OHM 5W 5% AXIAL  
[Ohmite](#)

RFQ



**RNF18FTC35R7**  
RES 35.7 OHM 1/8W 1% AXIAL  
[Stackpole Electronics Inc.](#)

RFQ



**MBA02040C3654FCT00**  
RES 3.65M OHM 0.4W 1% AXIAL  
[Vishay BC Components](#)

RFQ



**RNF12FTD8R45**  
RES 8.45 OHM 1/2W 1% AXIAL  
[Stackpole Electronics Inc.](#)

RFQ



**RSPF3JA3K90**  
RES 3.9K OHM 3W 5% AXIAL  
[Stackpole Electronics Inc.](#)

RFQ