

AT24C128-10PC-2.7

Microchip Technology

IC EEPROM 128KBIT 1MHZ 8DIP
 Contains lead / RoHS non-compliant
 Integrated Circuits (ICs)

[AT24C128-10PC-2.7.pdf](#)

Buy Now

We can supply Microchip Technology AT24C128-10PC-2.7, use the request quote form to request AT24C128-10PC-2.7 pirce, Microchip Technology Datasheet PDF and lead time.Zeanoit.com is a professional electronic components distributor. With 3+ Million line items of available electronic components can ship in short lead-time, over 250 thousand part numbers of electronic components in stock for immediately delivery, which may include part number AT24C128-10PC-2.7.The price and lead time for AT24C128-10PC-2.7 depending on the quantity required, availability and warehouse location.

Shopping Process

1

Confirm the product

2

submit the order

3

payment

4

wait for delivery

5

receive the goods

Specifications

Voltage - Supply:	2.7 V ~ 5.5 V
Supplier Device Package:	8-PDIP
Speed:	400kHz, 1MHz
Series:	-
Packaging:	Tube
Package / Case:	8-DIP (0.300", 7.62mm)
Operating Temperature:	0°C ~ 70°C (TA)
Memory Type:	Non-Volatile
Memory Size:	128Kb (16K x 8)
Memory Format:	EEPROM
Interface:	I ² C, 2-Wire Serial

Related products


AT24C128-10PC-1.8

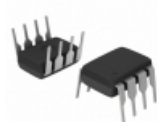
in stock
[ATMEL](#)

RFQ


AT24C128-10PC-2.7

in stock
[ATMEL](#)

RFQ


AT24C128-10PI-1.8

IC EEPROM 128KBIT 400KHZ 8DIP
[Microchip Technology](#)

RFQ


AT24C128-10PU-1.8

IC EEPROM 128KBIT 400KHZ 8DIP
[Microchip Technology](#)

RFQ


AT24C128-10PI

in stock
[ATMEL](#)

RFQ


AT24C128-10PI

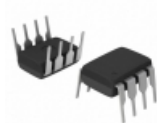
IC EEPROM 128KBIT 1MHZ 8DIP
[Microchip Technology](#)

RFQ


AT24C128-10PC

in stock
[ATMEL](#)

RFQ


AT24C128-10PC-1.8

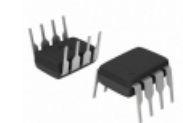
IC EEPROM 128KBIT 400KHZ 8DIP
[Microchip Technology](#)

RFQ


AT24C128-10PC

IC EEPROM 128KBIT 1MHZ 8DIP
[Microchip Technology](#)

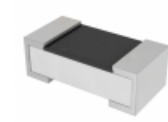
RFQ


AT24C128-10PI-2.7

IC EEPROM 128KBIT 1MHZ 8DIP
[Microchip Technology](#)

RFQ

Guess You May Looking For


AC0402FR-0743RL

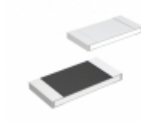
RES SMD 43 OHM 1% 1/16W 0402
[Yageo](#)

RFQ


KTR10EZPF3600

RES SMD 360 OHM 1% 1/8W 0805
[Rohm Semiconductor](#)

RFQ


MCR18ERTJ202

RES SMD 2K OHM 5% 1/4W 1206
[Rohm Semiconductor](#)

RFQ


RE0805FRE071K78L

RES SMD 1.78K OHM 1% 1/8W 0805
[Yageo](#)

RFQ


RMCS0402FT49R9

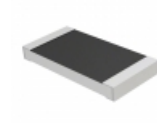
RES SMD 49.9 OHM 1% 1/16W 0402
[Stackpole Electronics Inc.](#)

RFQ


AA0805JR-0775KL

RES SMD 75K OHM 5% 1/8W 0805
[Yageo](#)

RFQ


RMCF2010FT487K

RES SMD 487K OHM 1% 3/4W 2010
[Stackpole Electronics Inc.](#)

RFQ


RT0603CRE0715K8L

RES SMD 15.8K OHM 1/10W 0603
[Yageo](#)

RFQ


RT0402BRD0720K3L

RES SMD 20.3KOHM 0.1% 1/16W 0402
[Yageo](#)

RFQ


AT1206DRD072K55L

RES SMD 2.55K OHM 0.5% 1/4W 1206
[Yageo](#)

RFQ