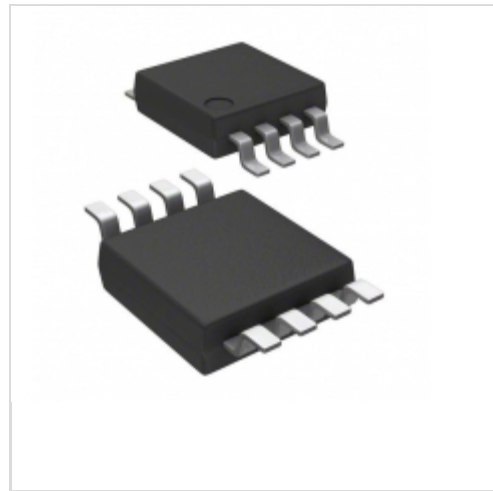


**MAX4210EEUA+**



[Maxim Integrated](#)

IC CURRENT MONITOR 1.5% 8MSOP

Lead free / RoHS Compliant

Integrated Circuits (ICs)

[1.MAX4210EEUA+.pdf](#)

[2.MAX4210EEUA+.pdf](#)

**Buy Now**

**In Stock**

**105 pcs**

Minimum:1

Multiples:100

Manufacturer lead time 10 weeks

**PRICE**

1 pcs	\$1.56
10 pcs	\$1.48

We can supply Maxim Integrated MAX4210EEUA+, use the request quote form to request MAX4210EEUA+ price, Maxim Integrated Datasheet PDF and lead time. Zeanoit.com is a professional electronic components distributor. With 3+ Million line items of available electronic components can ship in short lead-time, over 250 thousand part numbers of electronic components in stock for immediately delivery, which may include part number MAX4210EEUA+. The price and lead time for MAX4210EEUA+ depending on the quantity required, availability and warehouse location.

Shopping Process

**1**

Confirm the product

**2**

submit the order

**3**

payment

**4**

wait for delivery

**5**

receive the goods

Specifications

<b>Voltage - Input:</b>	4 V ~ 28 V
<b>Supplier Device Package:</b>	8-uMAX
<b>Series:</b>	-
<b>Sensing Method:</b>	High-Side
<b>Packaging:</b>	Tube
<b>Package / Case:</b>	8-TSSOP, 8-MSOP (0.118", 3.00mm Width)
<b>Operating Temperature:</b>	-40°C ~ 85°C
<b>Mounting Type:</b>	Surface Mount
<b>Function:</b>	Current Monitor
<b>Current - Output:</b>	-
<b>Accuracy:</b>	±0.5%

Related products

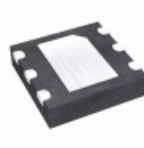


**MAX4210DEUA-T**

IC CURRENT MONITOR 1.5% 8-MSOP

[Maxim Integrated](#)

RFQ

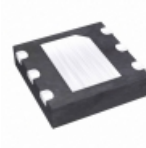


**MAX4210DETT+**

IC CURRENT MONITOR 1.5% 6TDFN

[Maxim Integrated](#)

RFQ



**MAX4210FETT+T**

IC CURRENT MONITOR 1.5% 6TDFN

[Maxim Integrated](#)

RFQ

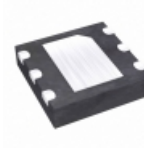


**MAX4210FEUA+T**

IC CURRENT MONITOR 1.5% 8MSOP

[Maxim Integrated](#)

RFQ



**MAX4210EETT+T**

IC CURRENT MONITOR 1.5% 6TDFN

[Maxim Integrated](#)

RFQ



**MAX4210EEUA+T**

IC CURRENT MONITOR 1.5% 8MSOP

[Maxim Integrated](#)

RFQ



**MAX4210FEUA+**

IC CURRENT MONITOR 1.5% 8MSOP

[Maxim Integrated](#)

RFQ

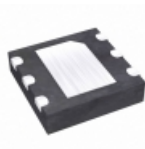


**MAX4210DEUA+**

IC CURRENT MONITOR 1.5% 8MSOP

[Maxim Integrated](#)

RFQ



**MAX4210DETT+T**

IC CURRENT MONITOR 1.5% 6TDFN

[Maxim Integrated](#)

RFQ



**MAX4210EEVKIT**

EVAL KIT FOR MAX4210

[Maxim Integrated](#)

RFQ

Guess You May Looking For

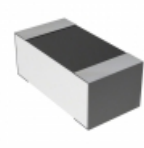


**RT0805CRB07487KL**

RES SMD 487K OHM 0.25% 1/8W 0805

[Yageo](#)

RFQ



**CPF0603B63R4E1**

RES SMD 63.4 OHM 0.1% 1/16W 0603

[TE Connectivity Passive Product](#)

RFQ

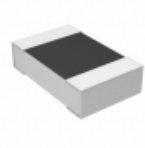


**RT0805CRB0768KL**

RES SMD 68K OHM 0.25% 1/8W 0805

[Yageo](#)

RFQ

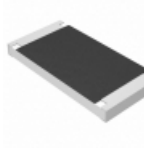


**CPF0805B3K57E1**

RES SMD 3.57KOHM 0.1% 1/10W 0805

[TE Connectivity Passive Product](#)

RFQ

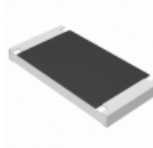


**ERJ-S1TF8251U**

RES SMD 8.25K OHM 1% 1W 2512

[Panasonic Electronic Components](#)

RFQ

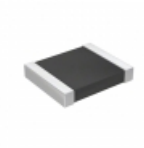


**ERJ-S1TF4020U**

RES SMD 402 OHM 1% 1W 2512

[Panasonic Electronic Components](#)

RFQ

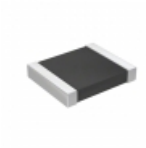


**RT1210BRD07590RL**

RES SMD 590 OHM 0.1% 1/4W 1210

[Yageo](#)

RFQ



**RT1210BRD0790R9L**

RES SMD 90.9 OHM 0.1% 1/4W 1210

[Yageo](#)

RFQ



**RG3216P-2942-B-T1**

RES SMD 29.4K OHM 0.1% 1/4W 1206

[Susumu](#)

RFQ



**RT1206CRC071K2L**

RES SMD 1.2K OHM 0.25% 1/4W 1206

[Yageo](#)

RFQ