

**AT28C16E-20SC**

**Microchip Technology**

IC EEPROM 16KBIT 200NS 24SOIC  
 Contains lead / RoHS non-compliant  
 Integrated Circuits (ICs)

[AT28C16E-20SC.pdf](#)

**Buy Now**

part#AT28C16E-20SC is available, see description of AT28C16E-20SC as below .  
 use the request quote form to request AT28C16E-20SC price and lead time.  
 Buy Electronic Components at zeanoit.com .we are an independent distributor of  
 electronic components with extensive inventory in stock.  
 The price and lead time for AT28C16E-20SC depending on the quantity required,  
 availability and warehouse location.Contact us today and our sales team will send you  
 quotation soon.  
 Email: sales@zeanoit.com

**Shopping Process**

**1**

Confirm the product

**2**

submit the order

**3**

payment

**4**

wait for delivery

**5**

receive the goods

**Specifications**

<b>Voltage - Supply:</b>	4.5 V ~ 5.5 V
<b>Supplier Device Package:</b>	24-SOIC
<b>Speed:</b>	200ns
<b>Series:</b>	-
<b>Packaging:</b>	Tube
<b>Package / Case:</b>	24-SOIC (0.295", 7.50mm Width)
<b>Operating Temperature:</b>	0°C ~ 70°C (TC)
<b>Memory Type:</b>	Non-Volatile
<b>Memory Size:</b>	16Kb (2K x 8)
<b>Memory Format:</b>	EEPROM
<b>Interface:</b>	Parallel

**Related products**


**AT28C16E-20PI**  
 IC EEPROM 16KBIT 200NS 24DIP  
[Microchip Technology](#)

RFQ



**AT28C16E-15SI**  
 in stock  
[ATMEL](#)

RFQ



**AT28C16E-20SI**  
 IC EEPROM 16KBIT 200NS 24SOIC  
[Microchip Technology](#)

RFQ



**AT28C16E-25PC**  
[AT](#)

RFQ



**AT28C17-15**  
 in stock  
[ATMEL](#)

RFQ



**AT28C17**  
 in stock  
[ATMEL](#)

RFQ



**AT28C17-15DC**  
 in stock  
[ATMEL](#)

RFQ



**AT28C16E-20JC**  
 IC EEPROM 16KBIT 200NS 32PLCC  
[Microchip Technology](#)

RFQ



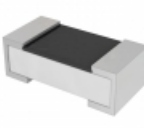
**AT28C16E-20PC**  
 IC EEPROM 16KBIT 200NS 24DIP  
[Microchip Technology](#)

RFQ



**AT28C16E-20JI**  
 IC EEPROM 16KBIT 200NS 32PLCC  
[Microchip Technology](#)

RFQ

**Guess You May Looking For**


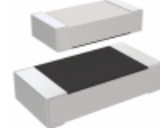
**AC0402FR-0733R2L**  
 RES SMD 33.2 OHM 1% 1/16W 0402  
[Yageo](#)

RFQ



**RT0805BRD07137RL**  
 RES SMD 137 OHM 0.1% 1/8W 0805  
[Yageo](#)

RFQ



**RC3216F3651CS**  
 RES SMD 3.65K OHM 1% 1/4W 1206  
[Samsung Electro-Mechanics America, Inc.](#)

RFQ



**RT0805FRE0768R1L**  
 RES SMD 68.1 OHM 1% 1/8W 0805  
[Yageo](#)

RFQ



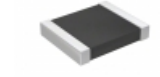
**RT0805DRD0711KL**  
 RES SMD 11K OHM 0.5% 1/8W 0805  
[Yageo](#)

RFQ



**RC0100FR-07510KL**  
 RES SMD 510K OHM 1% 1/32W 01005  
[Yageo](#)

RFQ



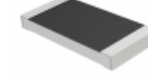
**AA1210JR-0722KL**  
 RES SMD 22K OHM 5% 1/2W 1210  
[Yageo](#)

RFQ



**RNCF0402DKE430R**  
 RES SMD 430 OHM 0.5% 1/16W 0402  
[Stackpole Electronics Inc.](#)

RFQ



**RMCF2010FT1K58**  
 RES SMD 1.58K OHM 1% 3/4W 2010  
[Stackpole Electronics Inc.](#)

RFQ



**CSR0805FTR200**  
 RES SMD 0.2 OHM 1% 1/4W 0805  
[Stackpole Electronics Inc.](#)

RFQ