

KA3882C



Fairchild/ON Semiconductor

IC CTRLR PWM SMPS UVLO 8DIP

Lead free / RoHS Compliant

Integrated Circuits (ICs)

[KA3882C.pdf](#)

Buy Now

Images are for reference only.

See Product Specifications for product details.

If you are interested to buy KA3882C,Just Email us.

Sales@zeanoit.com

our sales team will reply you within 24 hours

Shopping Process

1

Confirm the product

2

submit the order

3

payment

4

wait for delivery

5

receive the goods

Specifications

Voltage - Supply (Vcc/Vdd):	10 V ~ 30 V
Voltage - Start Up:	16V
Voltage - Breakdown:	-
Topology:	Flyback
Supplier Device Package:	8-DIP
Series:	-
Power (Watts):	-
Packaging:	Tube
Package / Case:	8-DIP (0.300", 7.62mm)
Output Isolation:	-
Operating Temperature:	0°C ~ 70°C (TA)
Mounting Type:	Through Hole
Internal Switch(s):	No
Frequency - Switching:	Up to 500kHz
Fault Protection:	Current Limiting
Duty Cycle:	96%
Control Features:	Frequency Control

Related products



KA3882D

FSC

RFQ



KA3883C

IC REG CTRLR 8DIP
Fairchild/ON Semiconductor

RFQ



KA3846

IC REG CTRLR 16DIP
Fairchild/ON Semiconductor

RFQ



KA3845B

IC REG CTRLR 8DIP
Fairchild/ON Semiconductor

RFQ



KA3882CDTF

IC CTRLR PWM SMPS UVLO 8SOIC
Fairchild/ON Semiconductor

RFQ



KA3882ED

IC REG CTRLR PWM CM 8-SOP
Fairchild/ON Semiconductor

RFQ



KA386

in stock
FSC

RFQ



KA3883

SAM

RFQ



KA3882

FSC

RFQ



KA3845A

N/A

RFQ

Guess You May Looking For



AC2512FK-075K76L

RES SMD 5.76K OHM 1% 1W 2512
Yageo

RFQ



RNCF1206DKE187K

RES SMD 187K OHM 0.5% 1/4W 1206
Stackpole Electronics Inc.

RFQ



RNCF1206BTC4R75

RES SMD 4.75 OHM 0.1% 1/4W 1206
Stackpole Electronics Inc.

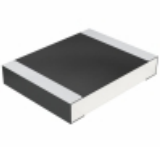
RFQ



SMM02070C7870FBS00

RES SMD 787 OHM 1% 1W MELF
Vishay Beyschlag

RFQ



CRCW12102K74FKEAHP

RES SMD 2.74K OHM 1% 3/4W 1210
Vishay Dale

RFQ



RT1206CRE077K32L

RES SMD 7.32KOHM 0.25% 1/4W 1206
Yageo

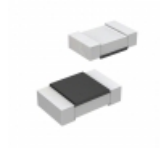
RFQ



AT0402CRD0737K4L

RES SMD 37.4K OHM 1/16W 0402
Yageo

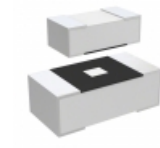
RFQ



CRT0805-FX-2211ELF

RES SMD 2.21K OHM 1% 1/8W 0805
Bourns Inc.

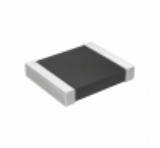
RFQ



ESR25JZPF7504

RES SMD 7.5M OHM 1% 1/2W 1210
Rohm Semiconductor

RFQ



RT1210DRD0763R4L

RES SMD 63.4 OHM 0.5% 1/4W 1210
Yageo

RFQ