

**CC-7U-Z113-Z1-B**



Digi International

UMOD CONNECTCORE 7U 16MB SDRAM

Lead free / RoHS Compliant

Integrated Circuits (ICs)

**Buy Now**

**Out Stock**

**0 pcs**

Minimum:1

Multiples:1

Manufacturer lead time 10 weeks

- 1.Please confirm the Detail which include the part no.and the manufacturer of the products when ordering.
- 2.If you have bill of material(BOM) list require to quote.you could send to our email.
- 3.You can email us to change the order details before shipment.
- 4.Orders cannot be canceled after shipping the packages.

Shopping Process



**Confirm the product**



**submit the order**



**payment**



**wait for delivery**



**receive the goods**

Specifications

<b>Speed:</b>	55MHz
<b>Size / Dimension:</b>	2.48" x 0.73" (62.9mm x 18.5mm)
<b>Series:</b>	ConnectCore®
<b>RAM Size:</b>	16MB
<b>Operating Temperature:</b>	0°C ~ 70°C
<b>Module/Board Type:</b>	MPU Core
<b>Flash Size:</b>	8MB
<b>Core Processor:</b>	ARM7TDMI, NS7520
<b>Connector Type:</b>	48-DIP
<b>Co-Processor:</b>	-

Related products



**CC-720**  
CONTROL CYCLE MECHANISM  
[Panduit Corp](#)

RFQ



**CC-9C-GN**  
KIT DEV 9C MODULE FOR NET+OS  
[Digi International](#)

RFQ



**CC-7U-Z111-Z1-B**  
UMOD CONNECT 7U 16MB SDRAM 25PK  
[Digi International](#)

RFQ



**CC-9C-CE6**  
KIT JUMP START 9C FOR MS CE 6.0  
[Digi International](#)

RFQ



**CC-7U-NET**  
KIT JUMP START 7U FOR NET+OS 7.X  
[Digi International](#)

RFQ



**CC-7U-Z111-Z1**  
MODULE 7U 16MB SDRAM 2MB FLASH  
[Digi International](#)

RFQ



**CC-9C-NET**  
KIT JUMP START 9C FOR NET+OS 7.X  
[Digi International](#)

RFQ



**CC-7U-Z113-Z1**  
MODULE 7U 16MB SDRAM 8MB FLASH  
[Digi International](#)

RFQ



**CC-9C-LX**  
KIT JUMP START 9C FOR LINUX  
[Digi International](#)

RFQ



**CC-9C-GN-NR**  
KIT DEV 9C MODULE FOR NET+OS  
[Digi International](#)

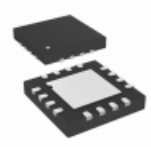
RFQ

Guess You May Looking For



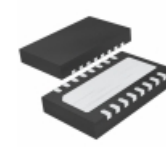
**UCC2919DTR**  
IC PWR MGR HOTSWP 3-8V 16SOIC

RFQ



**SY88912LMG**  
IC LASR DRVR 3.2GBPS 3.45V 16MLF  
[Microchip Technology](#)

RFQ



**LTC4232CDHC-1#TRPBF**  
IC CTRLR HOT SWAP 5A 16DFN  
[Linear Technology](#)

RFQ



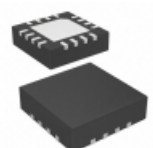
**LTC1643ALCGN#TRPBF**  
IC CTRLR HOTSWAP PCI BUS 16SSOP  
[Linear Technology](#)

RFQ



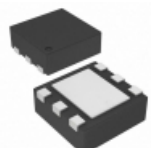
**HIP1011BCBZA**  
IC CTRLR HOT PLUG PCI 16SOIC  
[Intersil](#)

RFQ



**LDS8845-002-T2**  
IC LED DRVR LIN DIM 30MA 16TQFN  
[IXYS](#)

RFQ



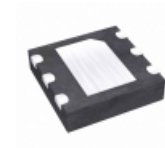
**TPS61041DRVR**  
IC LED DRVR RGLTR DIM 215MA 6SON

RFQ



**IR2011S**  
HI/LO SIDE DRVR 8SOIC  
[Infineon Technologies](#)

RFQ



**MAX16820ATT+T**  
IC LED DRIVER CTRLR DIM 6TDFN  
[Maxim Integrated](#)

RFQ



**VIPER06LSTR**  
IC OFFLINE SWITCH PWM 10-SSOP  
[STMicroelectronics](#)

RFQ