

## L293NG4



N/A  
 IC MOTOR DRIVER PAR 16-DIP  
 Lead free / RoHS Compliant  
 Integrated Circuits (ICs)

**Buy Now**

Images are for reference only.  
 See Product Specifications for product details.  
 If you are interested to buy L293NG4,Just Email us.  
 Sales@zeanoit.com  
 our sales team will reply you within 24 hours

### Shopping Process

**1**

Confirm the product

**2**

submit the order

**3**

payment

**4**

wait for delivery

**5**

receive the goods

### Specifications

<b>Voltage - Supply:</b>	4.5 V ~ 36 V
<b>Voltage - Load:</b>	4.5 V ~ 36 V
<b>Technology:</b>	Bipolar
<b>Supplier Device Package:</b>	16-PDIP
<b>Step Resolution:</b>	-
<b>Series:</b>	-
<b>Packaging:</b>	Tube
<b>Package / Case:</b>	16-DIP (0.300", 7.62mm)
<b>Output Configuration:</b>	Half Bridge (4)
<b>Operating Temperature:</b>	0°C ~ 70°C (TA)
<b>Mounting Type:</b>	Through Hole
<b>Motor Type - Stepper:</b>	Bipolar
<b>Motor Type - AC, DC:</b>	Brushed DC
<b>Interface:</b>	Parallel
<b>Function:</b>	Driver - Fully Integrated, Control and Power Stage
<b>Current - Output:</b>	1A
<b>Applications:</b>	General Purpose

### Related products



**L295**  
 IC DRIVER SWITCH DL 15MULTIWATT  
[STMicroelectronics](#)

RFQ



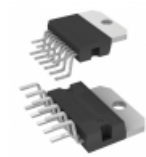
**L293NE**  
 IC MOTOR DRIVER PAR 16-DIP  
 N/A

RFQ



**L295N**  
 in stock  
[ST](#)

RFQ



**L294**  
 IC SOLENOID DRVR 11MULTIWATT  
[STMicroelectronics](#)

RFQ



**L293DWPG4**  
 IC MOTOR DRIVER PAR 28-SO  
 N/A

RFQ



**L2941M**  
[INEINFON](#)

RFQ



**L293NEG4**  
 IC MOTOR DRIVER PAR 16-DIP  
 N/A

RFQ



**L293E**  
 IC MOTOR DRIVER PAR 20-PWRDIP  
[STMicroelectronics](#)

RFQ



**L293N**  
 IC MOTOR DRIVER PAR 16-DIP  
 N/A

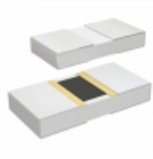
RFQ



**L2941R**  
[ST](#)

RFQ

### Guess You May Looking For



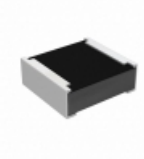
**PHP00805H4221BBT1**  
 RES SMD 4.22K OHM 0.1% 5/8W 0805  
[Vishay Thin Film](#)

RFQ



**RP73D1J147RBTG**  
 RES SMD 147 OHM 0.1% 1/10W 0603  
[TE Connectivity Passive Product](#)

RFQ



**RCP0505B18R0JTP**  
 RES SMD 18 OHM 5% 5W 0505  
[Vishay Dale](#)

RFQ



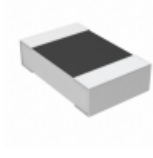
**RG2012V-9091-W-T5**  
 RES SMD 9.09KOHM 0.05% 1/8W 0805  
[Susumu](#)

RFQ



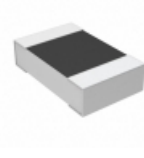
**RG3216V-1002-D-T5**  
 RES SMD 10K OHM 0.5% 1/4W 1206  
[Susumu](#)

RFQ



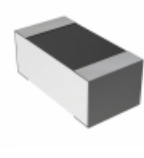
**RN73C2A26K1BTG**  
 RES SMD 26.1KOHM 0.1% 1/10W 0805  
[TE Connectivity Passive Product](#)

RFQ



**RN73C2A2K43BTG**  
 RES SMD 2.43KOHM 0.1% 1/10W 0805  
[TE Connectivity Passive Product](#)

RFQ



**RN73C1J1K82BTG**  
 RES SMD 1.82KOHM 0.1% 1/16W 0603  
[TE Connectivity Passive Product](#)

RFQ



**RG1608V-332-W-T1**  
 RES SMD 3.3KOHM 0.05% 1/10W 0603  
[Susumu](#)

RFQ



**RG1005V-3240-P-T1**  
 RES SMD 324 OHM 0.02% 1/16W 0402  
[Susumu](#)

RFQ