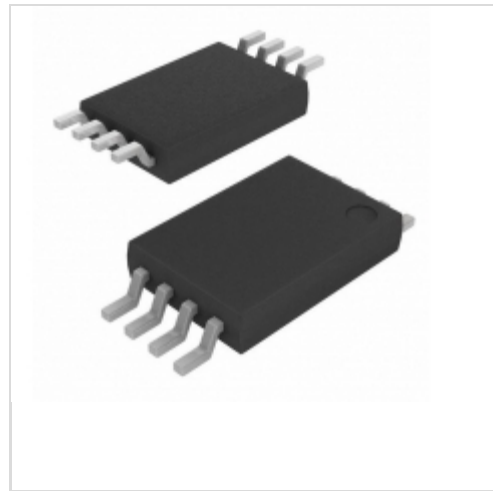


## AT93C46-10TU-2.7-T



### Microchip Technology

IC EEPROM 1KBIT 2MHZ 8TSSOP  
Lead free / RoHS Compliant  
Integrated Circuits (ICs)

[AT93C46-10TU-2.7-T.pdf](#)

**Buy Now**

part#AT93C46-10TU-2.7-T is available, see description of AT93C46-10TU-2.7-T as below .

use the request quote form to request AT93C46-10TU-2.7-T price and lead time. Buy Electronic Components at zeanoit.com .we are an independent distributor of electronic components with extensive inventory in stock.

The price and lead time for AT93C46-10TU-2.7-T depending on the quantity required, availability and warehouse location.Contact us today and our sales team will send you quotation soon.

Email: sales@zeanoit.com

## Shopping Process

**1**

Confirm the product

**2**

submit the order

**3**

payment

**4**

wait for delivery

**5**

receive the goods

## Specifications

<b>Voltage - Supply:</b>	2.7 V ~ 5.5 V
<b>Supplier Device Package:</b>	8-TSSOP
<b>Speed:</b>	2MHz
<b>Series:</b>	-
<b>Packaging:</b>	Tape & Reel (TR)
<b>Package / Case:</b>	8-TSSOP (0.173", 4.40mm Width)
<b>Operating Temperature:</b>	-40°C ~ 85°C (TA)
<b>Memory Type:</b>	Non-Volatile
<b>Memory Size:</b>	1Kb (128 x 8 , 64 x 16)
<b>Memory Format:</b>	EEPROM
<b>Interface:</b>	Microwire, 3-Wire Serial

## Related products



**AT93C46-10TI-2.7-T**  
IC EEPROM 1KBIT 2MHZ 8TSSOP  
[Microchip Technology](#)

RFQ



**AT93C46-10TU-1.8-T**  
IC EEPROM 1KBIT 2MHZ 8TSSOP  
[Microchip Technology](#)

RFQ



**AT93C46-PU27**  
in stock  
[ATMEL](#)

RFQ



**AT93C46-PC27**  
in stock  
[ATMEL](#)

RFQ



**AT93C46-10TU-2.7**  
IC EEPROM 1KBIT 2MHZ 8TSSOP  
[Microchip Technology](#)

RFQ



**AT93C46-PC2.7**  
in stock  
[ATMEL](#)

RFQ



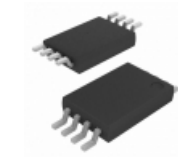
**AT93C46-PI27**  
[ATMEL](#)

RFQ



**AT93C46-C3**  
[ATMEL](#)

RFQ



**AT93C46-10TU-1.8**  
IC EEPROM 1KBIT 2MHZ 8TSSOP  
[Microchip Technology](#)

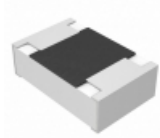
RFQ



**AT93C46-10TI-2.7**  
IC EEPROM 1KBIT 2MHZ 8TSSOP  
[Microchip Technology](#)

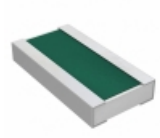
RFQ

## Guess You May Looking For



**ERJ-6ENF4320V**  
RES SMD 432 OHM 1% 1/8W 0805  
[Panasonic Electronic Components](#)

RFQ



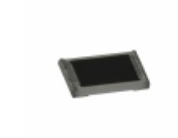
**PRG3216P-1800-D-T5**  
RES SMD 180 OHM 1W 1206 WIDE  
[Susumu](#)

RFQ



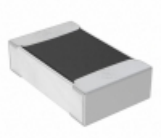
**RMCF0402FT442K**  
RES SMD 442K OHM 1% 1/16W 0402  
[Stackpole Electronics Inc.](#)

RFQ



**ERJ-XGNJ184Y**  
RES SMD 180K OHM 5% 1/32W 01005  
[Panasonic Electronic Components](#)

RFQ



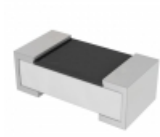
**RMCF0805FT6R81**  
RES SMD 6.81 OHM 1% 1/8W 0805  
[Stackpole Electronics Inc.](#)

RFQ



**RC0603FR-071M96L**  
RES SMD 1.96M OHM 1% 1/10W 0603  
[Yageo](#)

RFQ



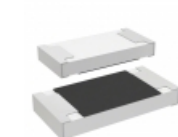
**AC0402FR-0736R5L**  
RES SMD 36.5 OHM 1% 1/16W 0402  
[Yageo](#)

RFQ



**RL73V1HR39JTD**  
RES SMD 0.39 OHM 5% 1/20W 0201  
[TE Connectivity Passive Product](#)

RFQ



**CRL0603-JW-R100ELF**  
RES SMD 0.1 OHM 5% 1/10W 0603  
[Bourns Inc.](#)

RFQ



**RT0603CRE0768K0L**  
RES SMD 68K OHM 0.25% 1/10W 0603  
[Yageo](#)

RFQ