

**CAT24AA04WI-GT3**



[AMI Semiconductor / ON Semiconductor](#)

IC EEPROM 4KBIT 1MHZ 8SOIC

Lead free / RoHS Compliant

Integrated Circuits (ICs)

[CAT24AA04WI-GT3.pdf](#)

**Buy Now**

We can supply AMI Semiconductor / ON Semiconductor CAT24AA04WI-GT3, use the request quote form to request CAT24AA04WI-GT3 price, AMI Semiconductor / ON Semiconductor Datasheet PDF and lead time. Zeanoit.com is a professional electronic components distributor. With 3+ Million line items of available electronic components can ship in short lead-time, over 250 thousand part numbers of electronic components in stock for immediately delivery, which may include part number CAT24AA04WI-GT3. The price and lead time for CAT24AA04WI-GT3 depending on the quantity required, availability and warehouse location.

Shopping Process

**1**

Confirm the product

**2**

submit the order

**3**

payment

**4**

wait for delivery

**5**

receive the goods

Specifications

<b>Voltage - Supply:</b>	1.7 V ~ 5.5 V
<b>Supplier Device Package:</b>	8-SOIC
<b>Speed:</b>	1MHz
<b>Series:</b>	-
<b>Packaging:</b>	Tape & Reel (TR)
<b>Package / Case:</b>	8-SOIC (0.154", 3.90mm Width)
<b>Operating Temperature:</b>	-40°C ~ 85°C (TA)
<b>Memory Type:</b>	Non-Volatile
<b>Memory Size:</b>	4Kb (512 x 8)
<b>Memory Format:</b>	EEPROM
<b>Interface:</b>	I <sup>2</sup> C, 2-Wire Serial

Related products



**CAT24AA04WI-G**  
IC EEPROM 4KBIT 1MHZ 8SOIC  
[ON Semiconductor](#)

RFQ



**CAT24AA04WGI-T3-A1**  
[CATALYST](#)

RFQ



**CAT24AA08WI**  
[CATALYST](#)

RFQ



**CAT24AA08WGI-T3-A1**  
[CATALYST](#)

RFQ



**CAT24AA08WI-GT3**  
IC EEPROM 8KBIT 1MHZ 8SOIC  
[ON Semiconductor](#)

RFQ



**CAT24AA08TDI-GT3**  
IC EEPROM 8KBIT 1MHZ TSOT23-5  
[ON Semiconductor](#)

RFQ



**CAT24AA08LI**  
[CATALYST](#)

RFQ



**CAT24AA04TDI-GT3**  
IC EEPROM 4KBIT 1MHZ TSOT23-5  
[ON Semiconductor](#)

RFQ



**CAT24AA02WI-GT3**  
IC EEPROM 2KBIT 400KHZ 8SOIC  
[ON Semiconductor](#)

RFQ



**CAT24AA04WI**  
[CATALYST](#)

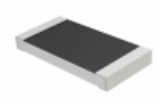
RFQ

Guess You May Looking For



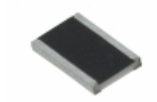
**RC0603J391CS**  
RES SMD 390 OHM 5% 1/20W 0201  
[Samsung Electro-Mechanics America, Inc.](#)

RFQ



**RMCF2010JT10R0**  
RES SMD 10 OHM 5% 3/4W 2010  
[Stackpole Electronics Inc.](#)

RFQ



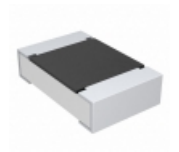
**RCL12181K50FKEK**  
RES SMD 1.5K OHM 1W 1812 WIDE  
[Vishay Dale](#)

RFQ



**AC0201FR-0762KL**  
RES SMD 62K OHM 1% 1/20W 0201  
[Yageo](#)

RFQ



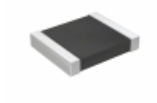
**CRCW08058R20FNEA**  
RES SMD 8.2 OHM 1% 1/8W 0805  
[Vishay Dale](#)

RFQ



**CRCW0805240RFKEAHP**  
RES SMD 240 OHM 1% 1/2W 0805  
[Vishay Dale](#)

RFQ



**AF1210JR-07180RL**  
RES SMD 180 OHM 5% 1/2W 1210  
[Yageo](#)

RFQ



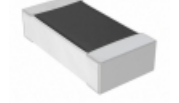
**RMCS2010JT18R0**  
RES SMD 18 OHM 5% 3/4W 2010  
[Stackpole Electronics Inc.](#)

RFQ



**RG3216P-1052-D-T5**  
RES SMD 10.5K OHM 0.5% 1/4W 1206  
[Susumu](#)

RFQ



**RNCF0603BTC86K6**  
RES SMD 86.6KOHM 0.1% 1/10W 0603  
[Stackpole Electronics Inc.](#)

RFQ