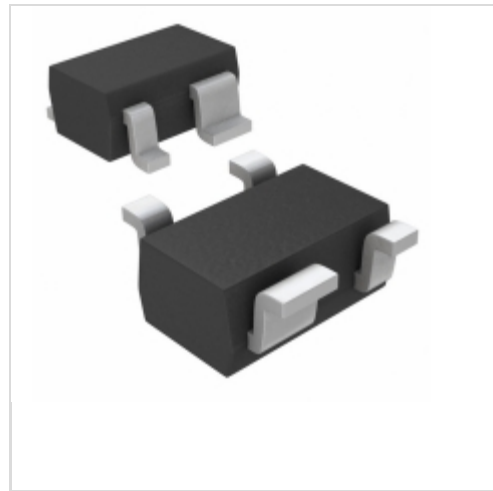


## MAX6388XS29D4-T



**Maxim Integrated**

IC MPU/RESET CIRC 2.93V SC70-4  
Contains lead / RoHS non-compliant  
Integrated Circuits (ICs)

[1.MAX6388XS29D4-T.pdf](#)

[2.MAX6388XS29D4-T.pdf](#)

**Buy Now**

Images are for reference only.

See Product Specifications for product details.

If you are interested to buy MAX6388XS29D4-T, Just Email us.

Sales@zeanoit.com

our sales team will reply you within 24 hours

### Shopping Process



**1**  
Confirm the product



**2**  
submit the order



**3**  
payment



**4**  
wait for delivery



**5**  
receive the goods

### Specifications

<b>Voltage - Threshold:</b>	2.93V, Adj
<b>Type:</b>	Multi-Voltage Supervisor
<b>Supplier Device Package:</b>	SC-70-4
<b>Series:</b>	-
<b>Reset Timeout:</b>	1.12 s Minimum
<b>Reset:</b>	Active High
<b>Packaging:</b>	Tape & Reel (TR)
<b>Package / Case:</b>	SC-82A, SOT-343
<b>Output:</b>	Push-Pull, Totem Pole
<b>Operating Temperature:</b>	-40°C ~ 125°C (TA)
<b>Number of Voltages Monitored:</b>	2
<b>Mounting Type:</b>	Surface Mount

### Related products



**MAX6388XS29D3-T**

in stock  
MAXIM

RFQ



**MAX6388XS29D2-T**

IC MPU/RESET CIRC 2.93V SC70-4  
Maxim Integrated

RFQ



**MAX6388XS29D6-T**

IC MPU/RESET CIRC 2.93V SC70-4  
Maxim Integrated

RFQ



**MAX6388XS29D6-T**

in stock  
MAXIM

RFQ



**MAX6388XS29D7-T**

IC MPU/RESET CIRC 2.93V SC70-4  
Maxim Integrated

RFQ



**MAX6388XS29D4-T**

in stock  
MAXIM

RFQ



**MAX6388XS29D5-T**

in stock  
MAXIM

RFQ



**MAX6388XS29D2-T**

in stock  
MAXIM

RFQ



**MAX6388XS29D3+T**

IC MPU/RESET CIRC 2.93V SC70-4  
Maxim Integrated

RFQ



**MAX6388XS29D5-T**

IC MPU/RESET CIRC 2.93V SC70-4  
Maxim Integrated

RFQ

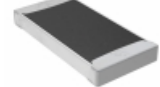
### Guess You May Looking For



**RG2012P-3571-C-T5**

RES SMD 3.57KOHM 0.25% 1/8W 0805  
Susumu

RFQ



**TNPW2010191RBEEF**

RES SMD 191 OHM 0.1% 0.4W 2010  
Vishay Dale

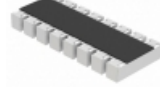
RFQ



**744C083472JP**

RES ARRAY 4 RES 4.7K OHM 2012  
CTS Resistor Products

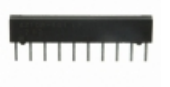
RFQ



**EXB-2HV5R6JV**

RES ARRAY 8 RES 5.6 OHM 1506  
Panasonic Electronic Components

RFQ



**4310R-101-392LF**

RES ARRAY 9 RES 3.9K OHM 10SIP  
Bourns Inc.

RFQ



**20J100E**

RES 100 OHM 10W 5% AXIAL  
Ohmite

RFQ



**CMF20200K00JNEA**

RES 200K OHM 1W 5% AXIAL  
Vishay Dale

RFQ



**RNF14BAC6K34**

RES 6.34K OHM 1/4W .1% AXIAL  
Stackpole Electronics Inc.

RFQ



**RC12KB12R0**

RES 12 OHM 1/2W 10% AXIAL  
Stackpole Electronics Inc.

RFQ



**RC12JB820R**

RES 820 OHM 1/2W 5% AXIAL  
Stackpole Electronics Inc.

RFQ