

NE662M04-EVNF09



CEL (California Eastern Laboratories)

EVAL BOARD FOR NE662M04 900MHZ
Contains lead / RoHS non-compliant
RF/IF and RFID

[1.NE662M04-EVNF09.pdf](#)

[2.NE662M04-EVNF09.pdf](#)

Buy Now

part#NE662M04-EVNF09 is available, see description of NE662M04-EVNF09 as below .
use the request quote form to request NE662M04-EVNF09 price and lead time.
Buy Electronic Components at zeanoit.com .we are an independent distributor of
electronic components with extensive inventory in stock.
The price and lead time for NE662M04-EVNF09 depending on the quantity required,
availability and warehouse location.Contact us today and our sales team will send you
quotation soon.
Email: sales@zeanoit.com

Shopping Process

1

Confirm the product

2

submit the order

3

payment

4

wait for delivery

5

receive the goods

Specifications

Type:	Transistor
Supplied Contents:	Board
Series:	-
Frequency:	900MHz
For Use With/Related Products:	NE662M04

Related products



NE662M04-EVNF09-A
EVAL BOARD FOR NE662M04 900MHZ
[CEL](#)

RFQ



NE662M04-EVGA09-A
EVAL BOARD FOR NE662M04 900MHZ
[CEL](#)

RFQ



NE662M04-EVGA09
EVAL BOARD FOR NE662M04 900MHZ
[CEL](#)

RFQ



NE662M04-EVNF19
EVAL BOARD FOR NE662M04 1.9GHZ
[CEL](#)

RFQ



NE662M04-A
RF TRANSISTOR NPN SOT-343F
[CEL](#)

RFQ



NE662M04-T1-A
in stock
[NEC](#)

RFQ



NE662M04-EVNF24
EVAL BOARD NE662M04 2.4GHZ
[CEL](#)

RFQ



NE662M04-EVIP09
EVAL BOARD FOR NE662M04 900MHZ
[CEL](#)

RFQ



NE662M04-EVGA19
EVAL BOARD FOR NE662M04 1.9GHZ
[CEL](#)

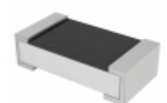
RFQ



NE662M04-EVNF16
EVAL BOARD FOR NE662M04 1.6GHZ
[CEL](#)

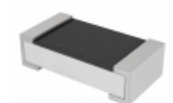
RFQ

Guess You May Looking For



PE0603FRF470R018L
RES SMD 0.018 OHM 1% 0.4W 0603
[Yageo](#)

RFQ



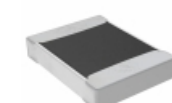
PE0603FRF470R066L
RES SMD 0.066 OHM 1% 0.4W 0603
[Yageo](#)

RFQ



RG1005N-2800-W-T5
RES SMD 280 OHM 0.05% 1/16W 0402
[Susumu](#)

RFQ



TNPW12108K66BEEA
RES SMD 8.66K OHM 0.1% 1/3W 1210
[Vishay Dale](#)

RFQ



SM2615FT21R0
RES SMD 21 OHM 1% 1W 2615
[Stackpole Electronics Inc.](#)

RFQ



RG3216N-1302-W-T1
RES SMD 13K OHM 0.05% 1/4W 1206
[Susumu](#)

RFQ



RT1206WRD0722R6L
RES SMD 22.6 OHM 0.05% 1/4W 1206
[Yageo](#)

RFQ



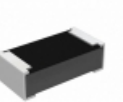
RT1206WRD07374RL
RES SMD 374 OHM 0.05% 1/4W 1206
[Yageo](#)

RFQ



RT0603WRB0710K2L
RES SMD 10.2K OHM 1/10W 0603
[Yageo](#)

RFQ



RCP0603B110RJTP
RES SMD 110 OHM 5% 3.9W 0603
[Vishay Dale](#)

RFQ