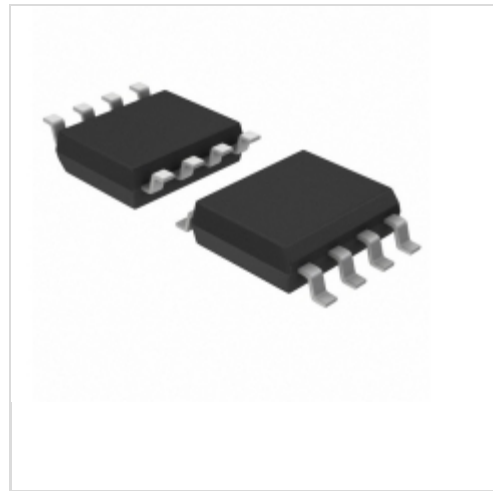


MC33152DG



[AMI Semiconductor / ON Semiconductor](#)

IC DRIVER MOSFET DUAL HS 8SOIC

Lead free / RoHS Compliant

Integrated Circuits (ICs)

[MC33152DG.pdf](#)

Buy Now

Images are for reference only.

See Product Specifications for product details.

If you are interested to buy MC33152DG,Just Email us.

Sales@zeanoit.com

our sales team will reply you within 24 hours

Out Stock

0 pcs

Minimum:1

Multiples:100

Manufacturer lead time 10 weeks

PRICE

1 pcs	\$1.47
10 pcs	\$1.318
100 pcs	\$1.027
500 pcs	\$0.849
1000 pcs	\$0.67

Shopping Process

1

Confirm the product

2

submit the order

3

payment

4

wait for delivery

5

receive the goods

Specifications

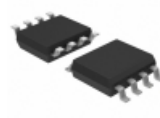
Voltage - Supply:	6.1 V ~ 18 V
Supplier Device Package:	8-SOIC
Series:	-
Rise / Fall Time (Typ):	36ns, 32ns
Packaging:	Tube
Package / Case:	8-SOIC (0.154", 3.90mm Width)
Operating Temperature:	-40°C ~ 150°C (TJ)
Number of Drivers:	2
Mounting Type:	Surface Mount
Logic Voltage - VIL, VIH:	0.8V, 2.6V
Input Type:	Non-Inverting
Gate Type:	N-Channel MOSFET
Driven Configuration:	Low-Side
Current - Peak Output (Source, Sink):	1.5A, 1.5A
Channel Type:	Independent

Related products



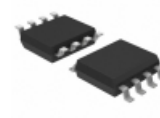
MC33152P
IC DRIVER MOSFET DUAL HS 8DIP
[ON Semiconductor](#)

RFQ



MC33152VDG
IC MOSFET DRIVER DUAL HS 8-SOIC
[ON Semiconductor](#)

RFQ



MC33151VDR2G
IC MOSFET DRIVER DUAL HS 8-SOIC
[ON Semiconductor](#)

RFQ



MC33152D
IC DRIVER MOSFET DUAL HS 8SOIC
[ON Semiconductor](#)

RFQ



MC33152DR2G
IC DRIVER MOSFET DUAL HS 8SOIC
[ON Semiconductor](#)

RFQ



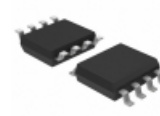
MC33151VDG
[ON](#)

RFQ



MC33152PG
IC DRIVER MOSFET DUAL HS 8DIP
[ON Semiconductor](#)

RFQ



MC33151VDR2
IC MOSFET DRIVER DUAL HS 8-SOIC
[ON Semiconductor](#)

RFQ



MC33152DR2
IC DRIVER MOSFET DUAL HS 8SOIC
[ON Semiconductor](#)

RFQ



MC33152
[FREESCALE](#)

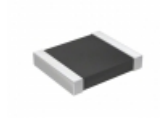
RFQ

Guess You May Looking For



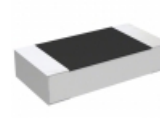
RT1206CRB07634KL
RES SMD 634K OHM 0.25% 1/4W 1206
[Yageo](#)

RFQ



RT1210CRE0782K5L
RES SMD 82.5KOHM 0.25% 1/4W 1210
[Yageo](#)

RFQ



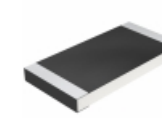
CPF1206B53R6E1
RES SMD 53.6 OHM 0.1% 1/8W 1206
[TE Connectivity Passive Product](#)

RFQ



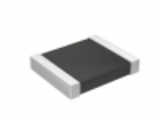
ERA-2HRC5900X
RES SMD 590 OHM 0.25% 1/16W 0402
[Panasonic Electronic Components](#)

RFQ



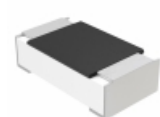
CRCW25127R15FKEH
RES SMD 7.15 OHM 1% 1W 2512
[Vishay Dale](#)

RFQ



RT1210CRD07511RL
RES SMD 511 OHM 0.25% 1/4W 1210
[Yageo](#)

RFQ



MCT06030D1050BP100
RES SMD 105 OHM 0.1% 1/10W 0603
[Vishay Beyschlag](#)

RFQ



MCW0406MD3480BP100
RES SMD 348 OHM 1/4W 0604 WIDE
[Vishay Beyschlag](#)

RFQ



RNCF2512BKE133R
RES SMD 133 OHM 0.1% 3/4W 2512
[Stackpole Electronics Inc.](#)

RFQ



RT1206BRC076K49L
RES SMD 6.49K OHM 0.1% 1/4W 1206
[Yageo](#)

RFQ