

BQ2201PNG4



N/A
 IC SRAM NONVOLATILE CNTRLR 8DIP
 Lead free / RoHS Compliant
 Integrated Circuits (ICs)

Buy Now

Out Stock

0 pcs

Minimum:1

Multiples:1

Manufacturer lead time 10 weeks

Part No. BQ2201PNG4 Is this a common-used part? : Yes

Shipped from : HK or Singapore warehouse

Same model may have multiple batches, images only for reference.

ECAD Models : Contact us to get

Email:sales@zeanoit.com

Shopping Process

1

Confirm the product

2

submit the order

3

payment

4

wait for delivery

5

receive the goods

Specifications

Voltage - Supply:	4.5 V ~ 5.5 V
Supplier Device Package:	8-PDIP
Series:	-
Packaging:	Tube
Package / Case:	8-DIP (0.300", 7.62mm)
Operating Temperature:	0°C ~ 70°C
Controller Type:	Nonvolatile SRAM

Related products



BQ2201SN-N
 IC SRAM NONVOLATILE CNTRLR 8SOIC
 N/A

RFQ



BQ21040EVM-777
 EVAL BOARD FOR BQ21040
 N/A

RFQ



BQ2201SN
 IC SRAM NONVOL CNTRLR 8-SOIC
 N/A

RFQ



BQ218
 in stock
 N/A

RFQ



BQ2201SN-NTR
 IC SRAM NONVOLATILE CNTRLR 8SOIC
 N/A

RFQ



BQ2201
 in stock
 N/A

RFQ



BQ2201PN
 IC SRAM NONVOLATILE CNTRLR 8DIP
 N/A

RFQ



BQ2201SN-NG4
 IC SRAM NONVOLATILE CNTRLR 8SOIC
 N/A

RFQ



BQ2201SNG4
 IC SRAM NONVOLATILE CNTRLR 8SOIC
 N/A

RFQ



BQ218TS-E1TR
 in stock
 N/A

RFQ

Guess You May Looking For



CRGH2010F402K
 RES SMD 402K OHM 1% 1W 2010
 TE Connectivity Passive Product

RFQ



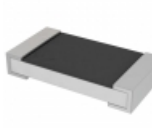
CRGH2010F56K2
 RES SMD 56.2K OHM 1% 1W 2010
 TE Connectivity Passive Product

RFQ



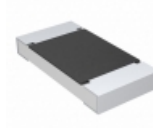
ESR25JZPJ163
 RES SMD 16K OHM 5% 1/2W 1210
 Rohm Semiconductor

RFQ



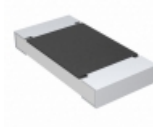
PT1206FR-7W0R845L
 RES SMD 0.845 OHM 1% 1/2W 1206
 Yageo

RFQ



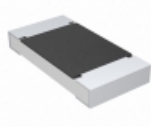
CRCW20106M20FKTF
 RES SMD 6.2M OHM 1% 3/4W 2010
 Vishay Dale

RFQ



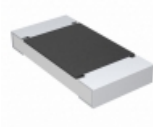
CRCW20108R25FNTF
 RES SMD 8.25 OHM 1% 3/4W 2010
 Vishay Dale

RFQ



CRCW20109M10FKTF
 RES SMD 9.1M OHM 1% 3/4W 2010
 Vishay Dale

RFQ



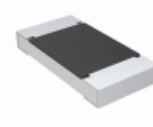
CRCW20109M53FKTF
 RES SMD 9.53M OHM 1% 3/4W 2010
 Vishay Dale

RFQ



CRGH2010F280K
 RES SMD 280K OHM 1% 1W 2010
 TE Connectivity Passive Product

RFQ



CRCW20102R40JNTF
 RES SMD 2.4 OHM 5% 3/4W 2010
 Vishay Dale

RFQ