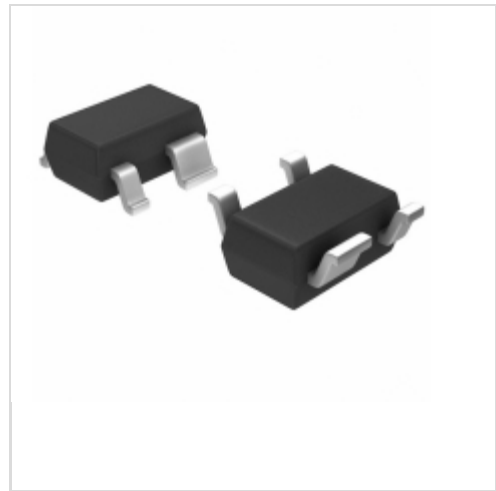


S-80956CNNB-G9ST2G



SII Semiconductor Corporation

IC VOLT DETECTOR 5.6V SC-82AB

Lead free / RoHS Compliant

Integrated Circuits (ICs)

[S-80956CNNB-G9ST2G.pdf](#)

Buy Now

Out Stock

0 pcs

Minimum:1

Multiples:100

Manufacturer lead time 10 weeks

We can supply SII Semiconductor Corporation S-80956CNNB-G9ST2G, use the request quote form to request S-80956CNNB-G9ST2G pirce, SII Semiconductor Corporation Datasheet PDF and lead time.Zeanoit.com is a professional electronic components distributor. With 3+ Million line items of available electronic components can ship in short lead-time, over 250 thousand part numbers of electronic components in stock for immediately delivery, which may include part number S-80956CNNB-G9ST2G.The price and lead time for S-80956CNNB-G9ST2G depending on the quantity required, availability and warehouse location.

Shopping Process

1

Confirm the product

2

submit the order

3

payment

4

wait for delivery

5

receive the goods

Specifications

Voltage - Threshold:	5.6V
Type:	Voltage Detector
Supplier Device Package:	SC-82AB
Series:	S-809xxC
Reset Timeout:	20 ms Minimum
Reset:	Active Low
Packaging:	Tape & Reel (TR)
Package / Case:	SC-82A, SOT-343
Output:	Open Drain or Open Collector
Operating Temperature:	-40°C ~ 85°C (TA)
Number of Voltages Monitored:	1
Mounting Type:	Surface Mount

Related products



S-80956CLPF-G7STFG
IC VOLT DETECTOR 5.6V SNT-4A
[SII Semiconductor Corporation](#)

RFQ



S-80956CNMC-G9ST2
IC VOLT DETECTOR 5.6V SOT23-5
[SII Semiconductor Corporation](#)

RFQ



S-80956CNNB-G9ST2U
IC VOLT DETECTOR 5.6V SC-82AB
[SII Semiconductor Corporation](#)

RFQ



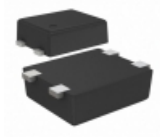
S-80956CLNB-G7ST2U
IC VOLT DETECTOR 5.6V SC-82AB
[SII Semiconductor Corporation](#)

RFQ



S-80956CNMC-G9ST2G
IC VOLT DETECTOR 5.6V SOT23-5
[SII Semiconductor Corporation](#)

RFQ



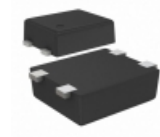
S-80956CNPF-G9STFG
IC VOLT DETECTOR 5.6V SNT-4A
[SII Semiconductor Corporation](#)

RFQ



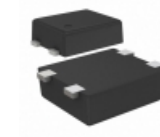
S-80957CLMC-G7TT2G
IC VOLT DETECTOR 5.7V SOT23-5
[SII Semiconductor Corporation](#)

RFQ



S-80956CLPF-G7STFU
IC VOLT DETECTOR 5.6V SNT-4A
[SII Semiconductor Corporation](#)

RFQ



S-80956CNPF-G9STFU
IC VOLT DETECTOR 5.6V SNT-4A
[SII Semiconductor Corporation](#)

RFQ



S-80957CLMC-G7TT2U
IC VOLT DETECTOR 5.7V SOT23-5
[SII Semiconductor Corporation](#)

RFQ

Guess You May Looking For



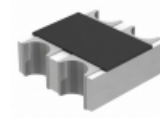
RG3216P-1271-W-T1
RES SMD 1.27KOHM 0.05% 1/4W 1206
[Susumu](#)

RFQ



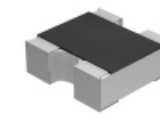
RG3216P-2372-C-T5
RES SMD 23.7KOHM 0.25% 1/4W 1206
[Susumu](#)

RFQ



EXB-V4V270JV
RES ARRAY 2 RES 27 OHM 0606
[Panasonic Electronic Components](#)

RFQ



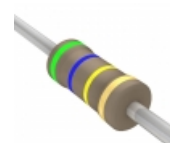
CRA04S043680JTD
RES ARRAY 2 RES 680 OHM 0404
[Vishay Dale](#)

RFQ



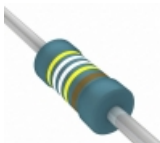
PF2205-100RF1
RES 100 OHM 50W 1% TO220
[Riedon](#)

RFQ



CFR-12JR-52-560K
RES 560K OHM 1/6W 5% AXIAL
[Yageo](#)

RFQ



SFR25H0004994FR500
RES 4.99M OHM 1/2W 1% AXIAL
[Vishay BC Components](#)

RFQ



CMF072K4000GNR6
RES 2.4K OHM 1/2W 2% AXIAL
[Vishay Dale](#)

RFQ



CMF6039R200FHR6
RES 39.2 OHM 1W 1% AXIAL
[Vishay Dale](#)

RFQ



CMF55100R00JKRE39
RES 100 OHM 1/2W 5% AXIAL
[Vishay Dale](#)

RFQ