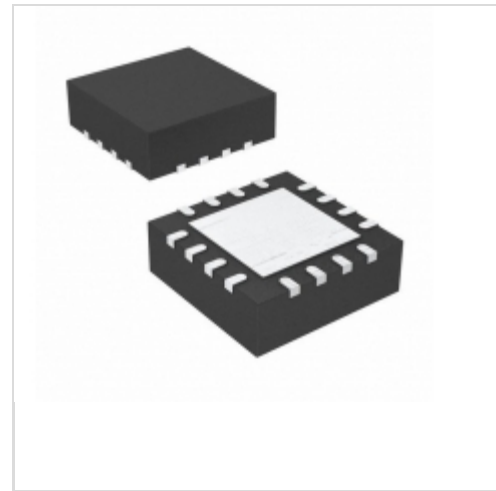


## HIP2100IRZ



**Intersil**

IC DRVR HALF BRDG 100V/2A 16-QFN

Lead free / RoHS Compliant

Integrated Circuits (ICs)

[HIP2100IRZ.pdf](#)

**Buy Now**

**Out Stock**

**0 pcs**

Minimum:1

Multiples:100

Manufacturer lead time 10 weeks

part#HIP2100IRZ is available, see description of HIP2100IRZ as below .

use the request quote form to request HIP2100IRZ price and lead time.

Buy Electronic Components at zeanoit.com .we are an independent distributor of electronic components with extensive inventory in stock.

The price and lead time for HIP2100IRZ depending on the quantity required, availability and warehouse location.Contact us today and our sales team will send you quotation soon.

Email: sales@zeanoit.com

### Shopping Process

**1**

**Confirm the product**

**2**

**submit the order**

**3**

**payment**

**4**

**wait for delivery**

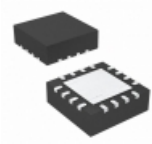
**5**

**receive the goods**

### Specifications

<b>Voltage - Supply:</b>	9 V ~ 14 V
<b>Supplier Device Package:</b>	16-QFN-EP (5x5)
<b>Series:</b>	-
<b>Rise / Fall Time (Typ):</b>	10ns, 10ns
<b>Packaging:</b>	Tube
<b>Package / Case:</b>	16-VQFN Exposed Pad
<b>Operating Temperature:</b>	-55°C ~ 150°C (TJ)
<b>Number of Drivers:</b>	2
<b>Mounting Type:</b>	Surface Mount
<b>Logic Voltage - VIL, VIH:</b>	4V, 7V
<b>Input Type:</b>	Non-Inverting
<b>High Side Voltage - Max (Bootstrap):</b>	114V
<b>Gate Type:</b>	N-Channel MOSFET
<b>Driven Configuration:</b>	Half-Bridge
<b>Current - Peak Output (Source, Sink):</b>	2A, 2A
<b>Channel Type:</b>	Independent

### Related products

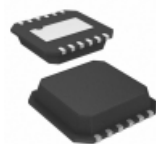


**HIP2100IRZT**

IC DRVR HALF BRDG 100V/2A 16-QFN

[Intersil](#)

**RFQ**

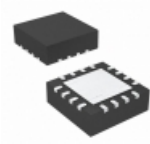


**HIP2100IR4T**

IC DRIVER HALF BRIDGE 100V 12DFN

[Intersil](#)

**RFQ**



**HIP2100IRT**

IC DRVR HALF BRDG 100V/2A 16-QFN

[Intersil](#)

**RFQ**



**HIP2100IR4**

IC DRIVER HALF BRIDGE 100V 12DFN

[Intersil](#)

**RFQ**



**HIP2101EIBT**

IC DRVR HALF BRDG 100V 8EP-SOIC

[Intersil](#)

**RFQ**



**HIP2100IR4Z**

IC DRIVER HALF BRIDGE 100V 12DFN

[Intersil](#)

**RFQ**



**HIP2101EIB**

IC DRVR HALF BRDG 100V 8EP-SOIC

[Intersil](#)

**RFQ**



**HIP2101EIBZ**

IC DRIVER HALF BRDG 100V 8EPSOIC

[Intersil](#)

**RFQ**

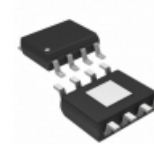


**HIP2100IR4ZT**

IC DRIVER HALF BRIDGE 100V 12DFN

[Intersil](#)

**RFQ**



**HIP2101EIBZT**

IC DRIVER HALF BRDG 100V 8EPSOIC

[Intersil](#)

**RFQ**

### Guess You May Looking For



**ERA-2HRC1070X**

RES SMD 107 OHM 0.25% 1/16W 0402

[Panasonic Electronic Components](#)

**RFQ**



**RNCF2512BTC14K3**

RES SMD 14.3K OHM 0.1% 1/2W 2512

[Stackpole Electronics Inc.](#)

**RFQ**

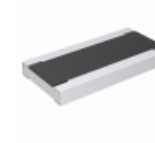


**TLM2HDR030FTE**

RES SMD 0.03 OHM 1% 3/4W 2010

[TE Connectivity Passive Product](#)

**RFQ**



**RCWE102021L5FKEA**

RES SMD 0.0215 OHM 2W 2010 WIDE

[Vishay Dale](#)

**RFQ**

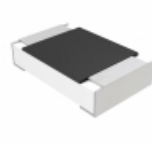


**RG2012P-1241-W-T5**

RES SMD 1.24KOHM 0.05% 1/8W 0805

[Susumu](#)

**RFQ**

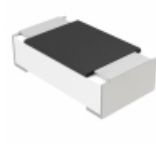


**MCU08050D5232BP100**

RES SMD 52.3K OHM 0.1% 1/8W 0805

[Vishay Beyschlag](#)

**RFQ**

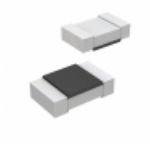


**MCT06030D6811BP100**

RES SMD 6.81KOHM 0.1% 1/10W 0603

[Vishay Beyschlag](#)

**RFQ**

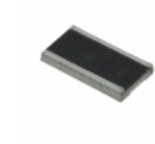


**CRT0805-CX-8250ELF**

RES SMD 825 OHM 0.25% 1/8W 0805

[Bourns Inc.](#)

**RFQ**



**RCL1225348RFKEG**

RES SMD 348 OHM 2W 2512 WIDE

[Vishay Dale](#)

**RFQ**



**RNCF1210DKE1K80**

RES SMD 1.8K OHM 0.5% 1/3W 1210

[Stackpole Electronics Inc.](#)

**RFQ**