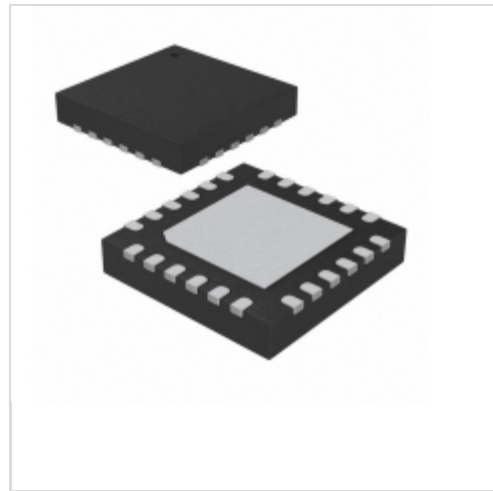


ATA6836C-PXQW 19



Microchip Technology
 IC MOTOR DRIVER SER 24QFN
 Lead free / RoHS Compliant
 Integrated Circuits (ICs)

[ATA6836C-PXQW 19.pdf](#)

Buy Now

We can supply ATA6836C-PXQW 19, use the request quote form to request ATA6836C-PXQW 19 price and lead time. Zeano is a professional electronic components distributor. With 3+ Million line items of available electronic components can ship in short lead-time, over 250 thousand part numbers of electronic components in stock for immediately delivery, which may include part number ATA6836C-PXQW 19. The price and lead time for ATA6836C-PXQW 19 depending on the quantity required and warehouse location. Contact us and our sales representative will provide you price. We look forward to work with you.

Shopping Process

1

Confirm the product

2

submit the order

3

payment

4

wait for delivery

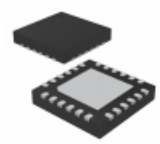
5

receive the goods

Specifications

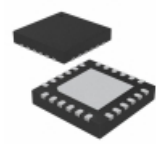
| | |
|------------------------------------|---|
| Voltage - Supply: | 4.75 V ~ 5.25 V |
| Voltage - Load: | 5.5 V ~ 40 V |
| Technology: | Power MOSFET |
| Supplier Device Package: | 24-VQFN (5x5) |
| Series: | - |
| Rds On (Typ): | 1 Ohm LS, 1 Ohm HS |
| Packaging: | Tape & Reel (TR) |
| Package / Case: | 24-VQFN Exposed Pad |
| Output Configuration: | Half Bridge (6) |
| Operating Temperature: | -40°C ~ 150°C (TJ) |
| Mounting Type: | Surface Mount |
| Load Type: | Inductive, Capacitive, Resistive |
| Interface: | SPI |
| Features: | Status Flag |
| Fault Protection: | Open Load Detect, Over Temperature, Short Circuit, UVLO |
| Current - Peak Output: | 650mA |
| Current - Output / Channel: | - |
| Applications: | Bulbs, DC Motors, Resistors |

Related products



ATA6836C-PXQW-1
 IC HALF-BRIDGE DRVR SPI 24QFN
[Microchip Technology](#)

RFQ



ATA6836C-PXQW
 IC MOTOR DRIVER SER 24QFN
[Microchip Technology](#)

RFQ



ATA6836C-TIQY-19
 IC MOTOR DRIVER SER SO28
[Microchip Technology](#)

RFQ



ATA6837
 High Temperature Hex Half-bridge
 Driver with Serial Input Control
[ATMEL](#)

RFQ



ATA6836-TIQY
 IC MOTOR DRIVER SER 28SO
[Microchip Technology](#)

RFQ



ATA6836C-TIQW
 IC HALF-BRIDGE DRVR SPI 28SOIC
[Microchip Technology](#)

RFQ



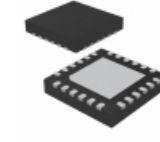
ATA6836C
 in stock
[ATMEL](#)

RFQ



ATA6836C-PXQW
 in stock
[ATMEL](#)

RFQ



ATA6836-PXQW 19
 IC MOTOR DRIVER SER 24QFN
[Microchip Technology](#)

RFQ



ATA6836C-TIQY
 IC MOTOR DRIVER SER 28SOIC
[Microchip Technology](#)

RFQ

Guess You May Looking For



PE2512FKM070R018L
 RES SMD 0.018 OHM 1% 1W 2512
[Yageo](#)

RFQ



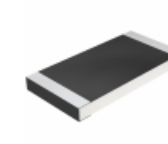
RNCF1210DTE2M20
 RES SMD 2.2M OHM 0.5% 1/4W 1210
[Stackpole Electronics Inc.](#)

RFQ



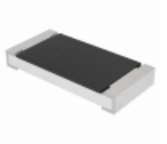
RNCF1210DTC619K
 RES SMD 619K OHM 0.5% 1/3W 1210
[Stackpole Electronics Inc.](#)

RFQ



CRCW2512200RJNEH
 RES SMD 200 OHM 5% 1W 2512
[Vishay Dale](#)

RFQ



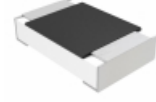
CRCW20102R80FKEFHP
 RES SMD 2.8 OHM 1% 1W 2010
[Vishay Dale](#)

RFQ



RNCF1210DTE1R37
 RES SMD 1.37 OHM 0.5% 1/4W 1210
[Stackpole Electronics Inc.](#)

RFQ



MCU08050D2212BP500
 RES SMD 22.1K OHM 0.1% 1/8W 0805
[Vishay Beyschlag](#)

RFQ



RNCF1210DTE4K30
 RES SMD 4.3K OHM 0.5% 1/3W 1210
[Stackpole Electronics Inc.](#)

RFQ



RNCF1210DTE69R8
 RES SMD 69.8 OHM 0.5% 1/3W 1210
[Stackpole Electronics Inc.](#)

RFQ



RNCF2010BTC2M20
 RES SMD 2.2M OHM 0.1% 1/4W 2010
[Stackpole Electronics Inc.](#)

RFQ