

IRS2336DSTRPBF

International Rectifier (Infineon Technologies)

IC GATE DRIVER HV 3PHASE 28-SOIC

Lead free / RoHS Compliant

Integrated Circuits (ICs)

[IRS2336DSTRPBF.pdf](#)
Buy Now

We can supply International Rectifier (Infineon Technologies) IRS2336DSTRPBF, use the request quote form to request IRS2336DSTRPBF price, International Rectifier (Infineon Technologies) Datasheet PDF and lead time. Zeanoit.com is a professional electronic components distributor. With 3+ Million line items of available electronic components can ship in short lead-time, over 250 thousand part numbers of electronic components in stock for immediately delivery, which may include part number IRS2336DSTRPBF. The price and lead time for IRS2336DSTRPBF depending on the quantity required, availability and warehouse location.

Out Stock
0 pcs

Minimum:1

Multiples:100

Manufacturer lead time 10 weeks

PRICE

1000 pcs	\$2.713
2000 pcs	\$2.578

Shopping Process

1
Confirm the product
2
submit the order
3
payment
4
wait for delivery
5
receive the goods

Specifications

Voltage - Supply:	10 V ~ 20 V
Supplier Device Package:	28-SOIC
Series:	-
Rise / Fall Time (Typ):	125ns, 50ns
Packaging:	Tape & Reel (TR)
Package / Case:	28-SOIC (0.295", 7.50mm Width)
Operating Temperature:	-40°C ~ 150°C (TJ)
Number of Drivers:	6
Mounting Type:	Surface Mount
Logic Voltage - VIL, VIH:	0.8V, 2.5V
Input Type:	Inverting
High Side Voltage - Max (Bootstrap):	600V
Gate Type:	IGBT, N-Channel MOSFET
Driven Configuration:	Half-Bridge
Current - Peak Output (Source, Sink):	200mA, 350mA
Channel Type:	3-Phase

Related products


IRS2336DJTRPBF

 IC GATE DRIVER HV 3PHASE 44-PLCC
[Infineon Technologies](#)

RFQ


IRS2336DJPBF

 IC DRIVER BRIDGE 3-PHASE 44-PLCC
[Infineon Technologies](#)

RFQ


IRS2336J
[IR](#)

RFQ


IRS2336DSPBF

 IC DRIVER BRIDGE 3-PHASE 28-SOIC
[Infineon Technologies](#)

RFQ


IRS2336DMTRPBF

 IC GATE DRIVER HV 3PHASE 48-MLPQ
[Infineon Technologies](#)

RFQ


IRS2336JPBF

 IC DRIVER BRIDGE 3-PHASE 44-PLCC
[Infineon Technologies](#)

RFQ


IRS2336JPBF.
[IR](#)

RFQ


IRS2336JTRPBF

 IC GATE DRIVER HV 3PHASE 44-PLCC
[Infineon Technologies](#)

RFQ

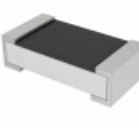

IRS2336S
[IR](#)

RFQ


IRS2336DS
[IR](#)

RFQ

Guess You May Looking For


PE0402FRF7W0R82L

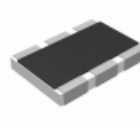
 RES SMD 0.82 OHM 1% 1/8W 0402
[Yageo](#)

RFQ


RG1608P-3481-W-T5

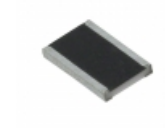
 RES SMD 3.48K OHM 1/10W 0603
[Susumu](#)

RFQ


RC1218DK-07787RL

 RES SMD 787 OHM 1W 1812 WIDE
[Yageo](#)

RFQ


RCL121818R7FKEK

 RES SMD 18.7 OHM 1W 1812 WIDE
[Vishay Dale](#)

RFQ


TNPW080516K2BEEA

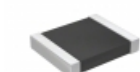
 RES SMD 16.2K OHM 0.1% 1/8W 0805
[Vishay Dale](#)

RFQ


RNCF2512BTC76K8

 RES SMD 76.8K OHM 0.1% 1/2W 2512
[Stackpole Electronics Inc.](#)

RFQ


RT1210CRD0762RL

 RES SMD 62 OHM 0.25% 1/4W 1210
[Yageo](#)

RFQ


RG1608N-9760-B-T5

 RES SMD 976 OHM 0.1% 1/10W 0603
[Susumu](#)

RFQ


MCW0406MD2800BP100

 RES SMD 280 OHM 1/4W 0604 WIDE
[Vishay Beyschlag](#)

RFQ


RNCF0805BKT392R

 RES SMD 392 OHM 0.1% 1/8W 0805
[Stackpole Electronics Inc.](#)

RFQ