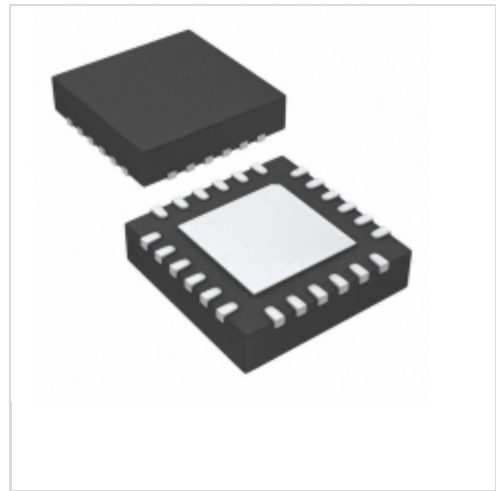


78M6610+LMU/D01T



Maxim Integrated

IC ENERGY MM PROCESSOR 24TQFN

Lead free / RoHS Compliant

Integrated Circuits (ICs)

[78M6610+LMU/D01T.pdf](#)

Buy Now

Images are for reference only.

See Product Specifications for product details.

If you are interested to buy 78M6610+LMU/D01T, Just Email us.

Sales@zeanoit.com

our sales team will reply you within 24 hours

Shopping Process

1

Confirm the product

2

submit the order

3

payment

4

wait for delivery

5

receive the goods

Specifications

Voltage - Supply:	3 V ~ 3.6 V
Voltage - I/O Low:	0.8V
Voltage - I/O High:	2V
Supplier Device Package:	24-TQFN (4x4)
Series:	-
Packaging:	Tape & Reel (TR)
Package / Case:	24-WFQFN Exposed Pad
Operating Temperature:	-40°C ~ 85°C
Mounting Type:	Surface Mount
Meter Type:	Single Phase
Measurement Error:	-
Input Impedance:	30 kOhm ~ 90 kOhm
Current - Supply:	8.1mA

Related products



78M6610+PSD/B02T

ENERGY MEAS PROCESSOR - PSU/DC

[Maxim Integrated](#)

RFQ



78M6610+PSD/B02

ENERGY MEAS PROCESSOR - PSU/DC

[Maxim Integrated](#)

RFQ

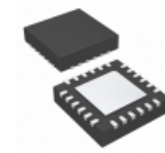


78M6610+LMUEVK1#

EVAL KIT 78M6610+LMU

[Maxim Integrated](#)

RFQ

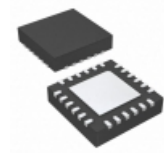


78M6610+LMU/BAPT

IC ENERGY MM PROCESSOR 24TQFN

[Maxim Integrated](#)

RFQ



78M6610+LMU/D01

IC ENERGY MM PROCESSOR 24TQFN

[Maxim Integrated](#)

RFQ

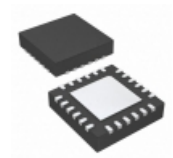


78M6610+LMU/EK#1

EVAL KIT 78M6610+LMU

[Maxim Integrated](#)

RFQ



78M6610+LMU/B01T

IC ENERGY MM PROCESSOR 24TQFN

[Maxim Integrated](#)

RFQ

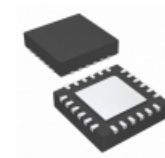


78M6610+PSD/C02

ENERGY MEAS PROCESSOR - PSU/DC

[Maxim Integrated](#)

RFQ

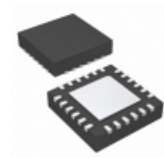


78M6610+LMU/BAP

IC ENERGY MM PROCESSOR 24TQFN

[Maxim Integrated](#)

RFQ



78M6610+LMU/B01

IC ENERGY MM PROCESSOR 24TQFN

[Maxim Integrated](#)

RFQ

Guess You May Looking For

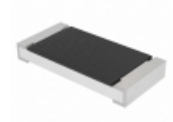


CRGS2010J390R

RES SMD 390 OHM 5% 3/4W 2010

[TE Connectivity AMP Connectors](#)

RFQ



CRCW2010953KFKEFHP

RES SMD 953K OHM 1% 1W 2010

[Vishay Dale](#)

RFQ



RT0603CRB07160RL

RES SMD 160 OHM 0.25% 1/10W 0603

[Yageo](#)

RFQ



RNCF2512DKE49K9

RES SMD 49.9K OHM 0.5% 1/2W 2512

[Stackpole Electronics Inc.](#)

RFQ



RNCF2512DKE8K66

RES SMD 8.66K OHM 0.5% 1/2W 2512

[Stackpole Electronics Inc.](#)

RFQ



RNCF2512DKE8K87

RES SMD 8.87K OHM 0.5% 1/2W 2512

[Stackpole Electronics Inc.](#)

RFQ



RNCF1210DTC196R

RES SMD 196 OHM 0.5% 1/3W 1210

[Stackpole Electronics Inc.](#)

RFQ



RNCF2512DKE590R

RES SMD 590 OHM 0.5% 3/4W 2512

[Stackpole Electronics Inc.](#)

RFQ



RNCF1210DTC8K45

RES SMD 8.45K OHM 0.5% 1/3W 1210

[Stackpole Electronics Inc.](#)

RFQ



RNCF1210DTC31K6

RES SMD 31.6K OHM 0.5% 1/3W 1210

[Stackpole Electronics Inc.](#)

RFQ