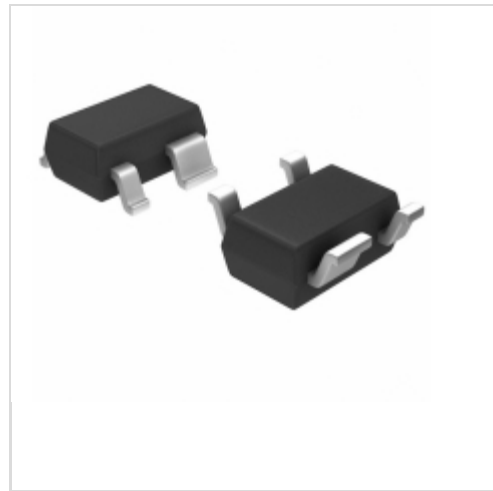


**S-80914CLNB-G6JT2U**



**SII Semiconductor Corporation**

IC VOLT DETECTOR 1.4V SC-82AB

Lead free / RoHS Compliant

Integrated Circuits (ICs)

[S-80914CLNB-G6JT2U.pdf](#)

**Buy Now**

**Out Stock**

**0 pcs**

Minimum:1

Multiples:100

Manufacturer lead time 10 weeks

part#S-80914CLNB-G6JT2U is available, see description of S-80914CLNB-G6JT2U as below .

use the request quote form to request S-80914CLNB-G6JT2U price and lead time.

Buy Electronic Components at zeanoit.com .we are an independent distributor of electronic components with extensive inventory in stock.

The price and lead time for S-80914CLNB-G6JT2U depending on the quantity required, availability and warehouse location.Contact us today and our sales team will send you quotation soon.

Email: sales@zeanoit.com

Shopping Process

**1**

**Confirm the product**

**2**

**submit the order**

**3**

**payment**

**4**

**wait for delivery**

**5**

**receive the goods**

Specifications

<b>Voltage - Threshold:</b>	1.4V
<b>Type:</b>	Voltage Detector
<b>Supplier Device Package:</b>	SC-82AB
<b>Series:</b>	S-809xxC
<b>Reset Timeout:</b>	2.7 ms Minimum
<b>Reset:</b>	Active Low
<b>Packaging:</b>	Tape & Reel (TR)
<b>Package / Case:</b>	SC-82A, SOT-343
<b>Output:</b>	Push-Pull, Totem Pole
<b>Operating Temperature:</b>	-40°C ~ 85°C (TA)
<b>Number of Voltages Monitored:</b>	1
<b>Mounting Type:</b>	Surface Mount

Related products



**S-80914CLPF-G6JTFG**  
IC VOLT DETECTOR 1.4V SNT-4A  
[SII Semiconductor Corporation](#)

RFQ



**S-80914CLPF-G6JTFU**  
IC VOLT DETECTOR 1.4V SNT-4A  
[SII Semiconductor Corporation](#)

RFQ



**S-80914CNMC-G8JT2U**  
IC VOLT DETECTOR 1.4V SOT23-5  
[SII Semiconductor Corporation](#)

RFQ



**S-80914CLMC-G6JT2U**  
IC VOLT DETECTOR 1.4V SOT23-5  
[SII Semiconductor Corporation](#)

RFQ



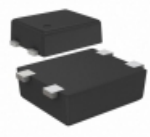
**S-80914CNMC-G8J-T2**  
[SEK](#)

RFQ



**S-80914CNMC-G8JT2G**  
IC VOLT DETECTOR 1.4V SOT23-5  
[SII Semiconductor Corporation](#)

RFQ



**S-80913CNPF-G8HTFG**  
IC VOLT DETECTOR 1.3V SNT-4A  
[SII Semiconductor Corporation](#)

RFQ



**S-80914CLMC-G6JT2G**  
IC VOLT DETECTOR 1.4V SOT23-5  
[SII Semiconductor Corporation](#)

RFQ



**S-80914CLNB-G6JT2G**  
IC VOLT DETECTOR 1.4V SC-82AB  
[SII Semiconductor Corporation](#)

RFQ



**S-80913CNPF-G8HTFU**  
IC VOLT DETECTOR 1.3V SNT-4A  
[SII Semiconductor Corporation](#)

RFQ

Guess You May Looking For



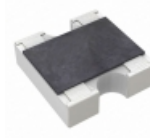
**RG1005N-57R6-B-T1**  
RES SMD 57.6 OHM 0.1% 1/16W 0402  
[Susumu](#)

RFQ



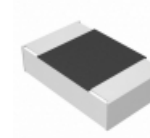
**741X043560JP**  
RES ARRAY 2 RES 56 OHM 0404  
[CTS Resistor Products](#)

RFQ



**YC162-JR-07270RL**  
RES ARRAY 2 RES 270 OHM 0606  
[Yageo](#)

RFQ



**ERA-S27J152V**  
RES TEMP SENS 1.5K OHM 5% 1/10W  
[Panasonic Electronic Components](#)

RFQ



**CFM14JA3M30**  
RES 3.3M OHM 1/4W 5% CF MINI  
[Stackpole Electronics Inc.](#)

RFQ



**RNMF14FAD100K**  
RES 100K OHM 1/4W 1% AXIAL  
[Stackpole Electronics Inc.](#)

RFQ



**RNMF14FTD3R32**  
RES 3.32 OHM 1/4W 1% AXIAL  
[Stackpole Electronics Inc.](#)

RFQ



**CMF55560R00FHRE**  
RES 560 OHM 1/2W 1% AXIAL  
[Vishay Dale](#)

RFQ



**CMF556K2000JKEA**  
RES 6.2K OHM 1/2W 5% AXIAL  
[Vishay Dale](#)

RFQ



**CMF552K1500DHEB**  
RES 2.15K OHM 1/2W 0.5% AXIAL  
[Vishay Dale](#)

RFQ