

**DS2711E+T&R**



**Maxim Integrated**  
IC NIMH CHARGER 16TSSOP  
Lead free / RoHS Compliant  
Integrated Circuits (ICs)

[DS2711E+T&R.pdf](#)

**Buy Now**

**Out Stock**  
**0 pcs**  
Minimum:1  
Multiples:100  
Manufacturer lead time 10 weeks

We can supply Maxim Integrated DS2711E+T&R, use the request quote form to request DS2711E+T&R price, Maxim Integrated Datasheet PDF and lead time. Zeanoit.com is a professional electronic components distributor. With 3+ Million line items of available electronic components can ship in short lead-time, over 250 thousand part numbers of electronic components in stock for immediately delivery, which may include part number DS2711E+T&R. The price and lead time for DS2711E+T&R depending on the quantity required, availability and warehouse location.

Shopping Process

**1**

Confirm the product

**2**

submit the order

**3**

payment

**4**

wait for delivery

**5**

receive the goods

Specifications

<b>Voltage - Supply (Max):</b>	5.5V
<b>Supplier Device Package:</b>	16-TSSOP
<b>Series:</b>	-
<b>Programmable Features:</b>	-
<b>Packaging:</b>	Tape & Reel (TR)
<b>Package / Case:</b>	16-TSSOP (0.173", 4.40mm Width)
<b>Operating Temperature:</b>	-20°C ~ 70°C (TA)
<b>Number of Cells:</b>	1 ~ 2
<b>Interface:</b>	-
<b>Fault Protection:</b>	-
<b>Current - Charging:</b>	-
<b>Charge Current - Max:</b>	-
<b>Battery Pack Voltage:</b>	-
<b>Battery Chemistry:</b>	Multi-Chemistry

Related products



**DS2711Z**  
in stock  
[MAXIM](#)

RFQ



**DS2711EB+**  
IC LOOSE-CELL NIMH CHRGR 16TSSOP  
[Maxim Integrated](#)

RFQ



**DS2711E**  
[MAXIM](#)

RFQ



**DS2711-DS2712**  
in stock  
[MAXIM](#)

RFQ



**DS2711Z+**  
IC NIMH CHARGER 16SOIC  
[Maxim Integrated](#)

RFQ



**DS2711E+T**  
[DALLAS](#)

RFQ



**DS2711E+**  
IC NIMH CHARGER 16TSSOP  
[Maxim Integrated](#)

RFQ



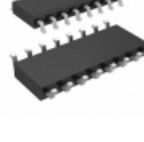
**DS2711EB+T**  
IC LOOSE-CELL NIMH CHRGR 16TSSOP  
[Maxim Integrated](#)

RFQ



**DS2711**  
in stock  
[MAXIM](#)

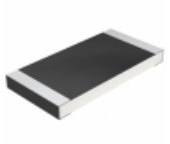
RFQ



**DS2711Z+T&R**  
IC NIMH CHARGER 16SOIC  
[Maxim Integrated](#)

RFQ

Guess You May Looking For



**CRCW25121R05FNTG**  
RES SMD 1.05 OHM 1% 1W 2512  
[Vishay Dale](#)

RFQ



**MMB02070C1471FB200**  
RES SMD 1.47K OHM 1% 1W 0207  
[Vishay Beyschlag](#)

RFQ



**RT0603WRE07165RL**  
RES SMD 165 OHM 0.05% 1/10W 0603  
[Yageo](#)

RFQ



**RT0603WRE07178RL**  
RES SMD 178 OHM 0.05% 1/10W 0603  
[Yageo](#)

RFQ



**RT0603WRE0723K2L**  
RES SMD 23.2K OHM 1/10W 0603  
[Yageo](#)

RFQ



**RT0603WRE0761K9L**  
RES SMD 61.9K OHM 1/10W 0603  
[Yageo](#)

RFQ



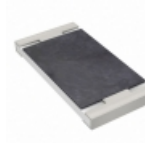
**AT0603CRD0733R2L**  
RES SMD 33.2OHM 0.25% 1/10W 0603  
[Yageo](#)

RFQ



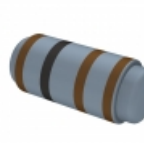
**RT0805CRD071K69L**  
RES SMD 1.69KOHM 0.25% 1/8W 0805  
[Yageo](#)

RFQ



**RT2512FKE07590KL**  
RES SMD 590K OHM 1% 3/4W 2512  
[Yageo](#)

RFQ



**MMF1WSFRF100R**  
RES SMD 100 OHM 1% 1W MELF  
[Yageo](#)

RFQ