

AT88SC0204C-PU



Microchip Technology
IC EEPROM 2KBIT 1.5MHZ 8DIP
Lead free / RoHS Compliant
Integrated Circuits (ICs)

- 1.AT88SC0204C-PU.pdf
- 2.AT88SC0204C-PU.pdf

Buy Now

part#AT88SC0204C-PU is available, see description of AT88SC0204C-PU as below . use the request quote form to request AT88SC0204C-PU price and lead time. Buy Electronic Components at zeanoit.com .we are an independent distributor of electronic components with extensive inventory in stock. The price and lead time for AT88SC0204C-PU depending on the quantity required, availability and warehouse location.Contact us today and our sales team will send you quotation soon.
Email: sales@zeanoit.com

Shopping Process

1

Confirm the product

2

submit the order

3

payment

4

wait for delivery

5

receive the goods

Specifications

Voltage - Supply:	2.7 V ~ 5.5 V
Supplier Device Package:	8-PDIP
Speed:	5MHz
Series:	CryptoMemory®
Packaging:	Tube
Package / Case:	8-DIP (0.300", 7.62mm)
Operating Temperature:	-40°C ~ 85°C (TC)
Memory Type:	Non-Volatile
Memory Size:	2Kb (256 x 8)
Memory Format:	EEPROM
Interface:	I ² C, 2-Wire Serial

Related products



AT88SC0204C-WI

in stock
[ATMEL](#)

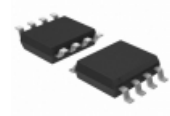
RFQ



AT88SC0204C-SI

in stock
[ATMEL](#)

RFQ



AT88SC0204C-SU

IC EEPROM 2KBIT 5MHZ 8SOIC
[Microchip Technology](#)

RFQ



AT88SC0204C-MPTG

IC EEPROM 2KBIT 5MHZ M2P
[Microchip Technology](#)

RFQ



AT88SC0204C-PI

in stock
[ATMEL](#)

RFQ



AT88SC0204C-Y4U

in stock
[ATMEL](#)

RFQ

AT88SC0204C-PU

in stock
[ATMEL](#)

RFQ



AT88SC0204C-MP

IC EEPROM 2KBIT 5MHZ M2P
[Microchip Technology](#)

RFQ



AT88SC0204C-Y4I

in stock
[ATMEL](#)

RFQ

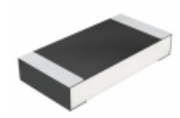


AT88SC0204C-MJTG

IC EEPROM 2KBIT 5MHZ M2J
[Microchip Technology](#)

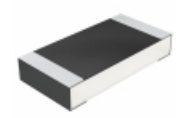
RFQ

Guess You May Looking For



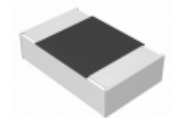
CRCW12063K65FKEA
RES SMD 3.65K OHM 1% 1/4W 1206
[Vishay Dale](#)

RFQ



CRCW1206137KFKEA
RES SMD 137K OHM 1% 1/4W 1206
[Vishay Dale](#)

RFQ



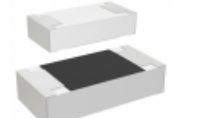
ERA-6ARB133V
RES SMD 13K OHM 0.1% 1/8W 0805
[Panasonic Electronic Components](#)

RFQ



CR0402-JW-360GLF
RES SMD 36 OHM 5% 1/16W 0402
[Bourns Inc.](#)

RFQ



CR1206-FX-5601ELF
RES SMD 5.6K OHM 1% 1/4W 1206
[Bourns Inc.](#)

RFQ



RT0402DRD0718R7L
RES SMD 18.7 OHM 0.5% 1/16W 0402
[Yageo](#)

RFQ



RG1608P-9092-D-T5
RES SMD 90.9KOHM 0.5% 1/10W 0603
[Susumu](#)

RFQ



ESR10EZPF4022
RES SMD 40.2K OHM 1% 0.4W 0805
[Rohm Semiconductor](#)

RFQ



ESR10EZPF9093
RES SMD 909K OHM 1% 0.4W 0805
[Rohm Semiconductor](#)

RFQ



RNCF0402FTE22K0
RES SMD 22K OHM 1% 1/16W 0402
[Stackpole Electronics Inc.](#)

RFQ