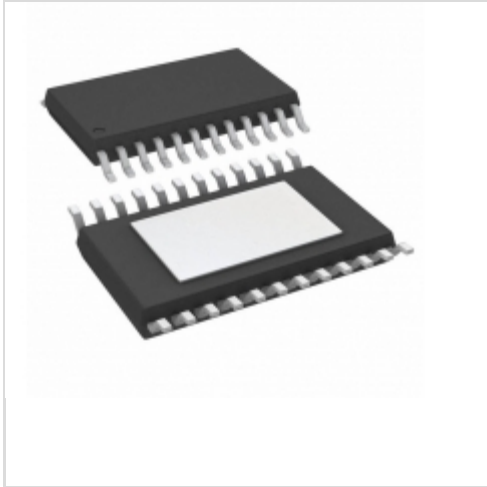


A4987SLPTR-T



Allegro MicroSystems, LLC.

IC MOTOR DRIVER PAR 24TSSOP

Lead free / RoHS Compliant

Integrated Circuits (ICs)

[A4987SLPTR-T.pdf](#)

Buy Now

Out Stock

0 pcs

Minimum:1

Multiples:100

Manufacturer lead time 10 weeks

Images are for reference only.

See Product Specifications for product details.

If you are interested to buy A4987SLPTR-T, Just Email us.

Sales@zeanoit.com

our sales team will reply you within 24 hours

Shopping Process



Confirm the product



submit the order



payment



wait for delivery

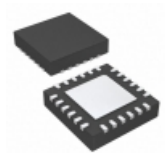


receive the goods

Specifications

| | |
|---------------------------------|--|
| Voltage - Supply: | 3 V ~ 5.5 V |
| Voltage - Load: | 8 V ~ 35 V |
| Technology: | DMOS |
| Supplier Device Package: | 24-TSSOP-EP |
| Step Resolution: | 1, 1/2, 1/4 |
| Series: | - |
| Packaging: | Tape & Reel (TR) |
| Package / Case: | 24-TSSOP (0.173", 4.40mm Width) Exposed Pad |
| Output Configuration: | Half Bridge (4) |
| Operating Temperature: | -20°C ~ 150°C (TJ) |
| Mounting Type: | Surface Mount |
| Motor Type - Stepper: | Bipolar |
| Motor Type - AC, DC: | - |
| Interface: | Parallel |
| Function: | Driver - Fully Integrated, Control and Power Stage |
| Current - Output: | 1A |
| Applications: | General Purpose |

Related products



A4987SESTR-T

IC MOTOR DRIVER PAR 24QFN

[Allegro MicroSystems, LLC](#)

RFQ



A4989SLDTR-T

IC MOTOR CONTROLLER PAR 38TSSOP

[Allegro MicroSystems, LLC](#)

RFQ



A4989SLDT

[ALLEGRO](#)

RFQ

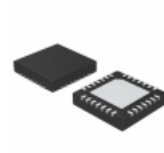


A4990KLPTR-T

IC DVR FULL BRIDGE DUAL 20TSSOP

[Allegro MicroSystems, LLC](#)

RFQ



A4988SETTR-T

IC MOTOR DRIVER PAR 28QFN

[Allegro MicroSystems, LLC](#)

RFQ



A4990KLP-T

[ALLEGRO](#)

RFQ



A4986SLPTR-T

IC MOTOR DRIVER PAR 24TSSOP

[Allegro MicroSystems, LLC](#)

RFQ



A4987SLPT-T

[ALLEGRO](#)

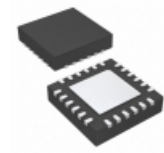
RFQ



A4986SETTR

[ALLEGRO](#)

RFQ



A4986SESTR-T

IC MOTOR DRIVER PAR 24QFN

[Allegro MicroSystems, LLC](#)

RFQ

Guess You May Looking For



RG1005V-6040-D-T10

RES SMD 604 OHM 0.5% 1/16W 0402

[Susumu](#)

RFQ

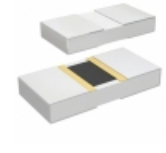


RG1005V-1241-D-T10

RES SMD 1.24KOHM 0.5% 1/16W 0402

[Susumu](#)

RFQ

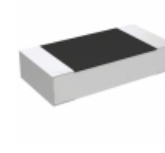


PHP00805H1000BBT1

RES SMD 100 OHM 0.1% 5/8W 0805

[Vishay Thin Film](#)

RFQ

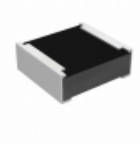


RP73D2B200KBTG

RES SMD 200K OHM 0.1% 1/4W 1206

[TE Connectivity Passive Product](#)

RFQ



RCP0505B1K60GEA

RES SMD 1.6K OHM 2% 5W 0505

[Vishay Dale](#)

RFQ

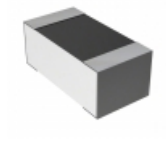


RG1608V-3240-B-T5

RES SMD 324 OHM 0.1% 1/10W 0603

[Susumu](#)

RFQ

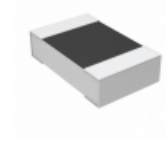


RN73C1J147RBTG

RES SMD 147 OHM 0.1% 1/16W 0603

[TE Connectivity Passive Product](#)

RFQ



1676164-5

RES SMD 11.8KOHM 0.1% 1/10W 0805

[TE Connectivity Passive Product](#)

RFQ



RG1005V-272-P-T1

RES SMD 2.7KOHM 0.02% 1/16W 0402

[Susumu](#)

RFQ



RG1608V-1871-P-T1

RES SMD 1.87K OHM 1/10W 0603

[Susumu](#)

RFQ

