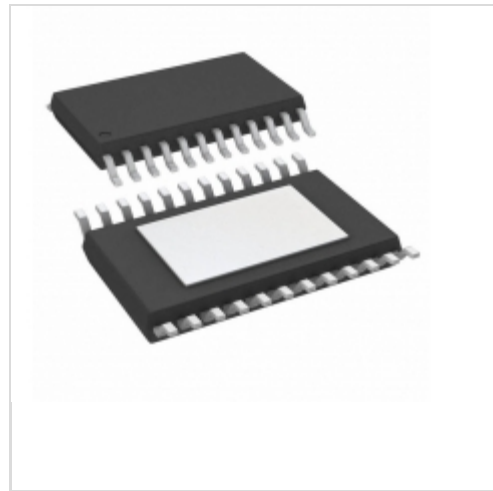


## STP16DP05XTTR



[STMicroelectronics](#)

IC LED DRIVER LIN 100MA 24TSSOP

Lead free / RoHS Compliant

Integrated Circuits (ICs)

[STP16DP05XTTR.pdf](#)

[Buy Now](#)

**Out Stock**

**0 pcs**

Minimum:1

Multiples:100

Manufacturer lead time 10 weeks

**PRICE**

2500 pcs	\$0.774
5000 pcs	\$0.745
12500 pcs	\$0.716

We can supply STP16DP05XTTR, use the request quote form to request STP16DP05XTTR price and lead time. Zeano is a professional electronic components distributor. With 3+ Million line items of available electronic components can ship in short lead-time, over 250 thousand part numbers of electronic components in stock for immediately delivery, which may include part number STP16DP05XTTR. The price and lead time for STP16DP05XTTR depending on the quantity required and warehouse location. Contact us and our sales representative will provide you price. We look forward to work with you.

### Shopping Process



**Confirm the product**



**submit the order**



**payment**



**wait for delivery**



**receive the goods**

### Specifications

<b>Voltage - Supply (Min):</b>	3V
<b>Voltage - Supply (Max):</b>	5.5V
<b>Voltage - Output:</b>	20V
<b>Type:</b>	Linear
<b>Topology:</b>	Shift Register
<b>Supplier Device Package:</b>	24-TSSOP-EP
<b>Series:</b>	-
<b>Packaging:</b>	Tape & Reel (TR)
<b>Package / Case:</b>	24-TSSOP (0.173", 4.40mm Width) Exposed Pad
<b>Operating Temperature:</b>	-40°C ~ 125°C (TA)
<b>Number of Outputs:</b>	16
<b>Mounting Type:</b>	Surface Mount
<b>Internal Switch(s):</b>	Yes
<b>Frequency:</b>	30MHz
<b>Dimming:</b>	-
<b>Current - Output / Channel:</b>	100mA
<b>Applications:</b>	-

### Related products



**STP16DP05B1R**

IC LED DRIVER LINEAR 100MA 24DIP

[STMicroelectronics](#)

[RFQ](#)



**STP16DP05MTR**

IC LED DRIVER LINEAR 100MA 24SOP

[STMicroelectronics](#)

[RFQ](#)



**STP16DPP05PTR**

IC LED DRIVER LINEAR 40MA 24QSOP

[STMicroelectronics](#)

[RFQ](#)

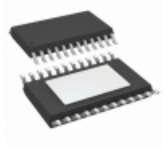


**STP16DPP05TTR**

IC LED DRIVER LIN 40MA 24TSSOP

[STMicroelectronics](#)

[RFQ](#)



**STP16DPP05XTTR**

IC LED DRIVER LIN 40MA 24TSSOP

[STMicroelectronics](#)

[RFQ](#)



**STP16DP05PTR**

IC LED DRIVER LIN 100MA 24QSOP

[STMicroelectronics](#)

[RFQ](#)



**STP16DP05TTR**

IC LED DRIVER LIN 100MA 24TSSOP

[STMicroelectronics](#)

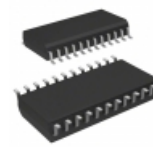
[RFQ](#)



**STP16DP05**

[ST](#)

[RFQ](#)



**STP16DPPS05MTR**

IC LED DRIVER LINEAR 40MA 24SOP

[STMicroelectronics](#)

[RFQ](#)



**STP16DPP05MTR**

IC LED DRIVER LINEAR 40MA 24SO

[STMicroelectronics](#)

[RFQ](#)

### Guess You May Looking For



**HRG3216P-1542-D-T1**

RES SMD 15.4K OHM 0.5% 1W 1206

[Susumu](#)

[RFQ](#)



**RG2012N-6042-W-T1**

RES SMD 60.4KOHM 0.05% 1/8W 0805

[Susumu](#)

[RFQ](#)



**CSSH2728FT36L0**

RES SMD 0.036 OHM 4W 2827 WIDE

[Stackpole Electronics Inc.](#)

[RFQ](#)



**RG1005N-2612-W-T1**

RES SMD 26.1K OHM 1/16W 0402

[Susumu](#)

[RFQ](#)



**SM2615JT750R**

RES SMD 750 OHM 5% 1W 2615

[Stackpole Electronics Inc.](#)

[RFQ](#)

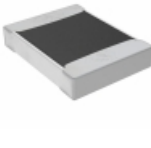


**RG1005N-1400-W-T5**

RES SMD 140 OHM 0.05% 1/16W 0402

[Susumu](#)

[RFQ](#)

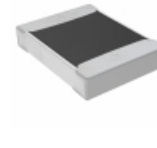


**TNPW12105K60BETA**

RES SMD 5.6K OHM 0.1% 1/3W 1210

[Vishay Dale](#)

[RFQ](#)



**TNPW121019K1BETA**

RES SMD 19.1K OHM 0.1% 1/3W 1210

[Vishay Dale](#)

[RFQ](#)



**PTN1206E4591BST1**

RES SMD 4.59K OHM 0.1% 0.4W 1206

[Vishay Thin Film](#)

[RFQ](#)



**SM6227JTR600**

RES SMD 0.6 OHM 5% 3W 6227

[Stackpole Electronics Inc.](#)

[RFQ](#)

