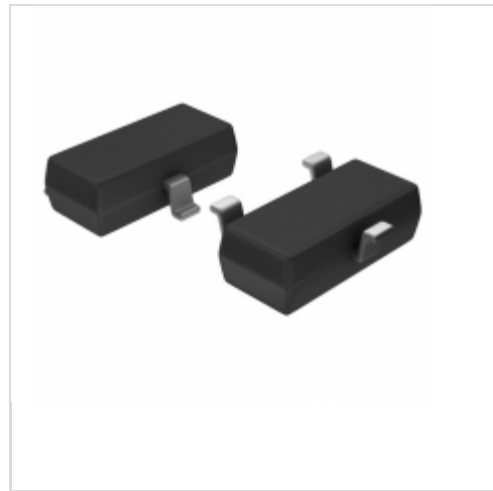


TS2431BILT

STMicroelectronics

IC VREF SHUNT ADJ SOT23-3

Lead free / RoHS Compliant

Integrated Circuits (ICs)

[TS2431BILT.pdf](#)
Buy Now
In Stock
35 pcs

Minimum:1

Multiples:100

Manufacturer lead time 10 weeks

PRICE

1 pcs	\$0.41
10 pcs	\$0.351
100 pcs	\$0.262
500 pcs	\$0.206
1000 pcs	\$0.159

Images are for reference only.

See Product Specifications for product details.

If you are interested to buy TS2431BILT,Just Email us.

Sales@zeanoit.com

our sales team will reply you within 24 hours

Shopping Process
1
Confirm the product
2
submit the order
3
payment
4
wait for delivery
5
receive the goods
Specifications

Voltage - Output (Min/Fixed):	2.5V
Voltage - Output (Max):	24V
Voltage - Input:	-
Tolerance:	±0.5%
Temperature Coefficient:	100ppm/°C
Supplier Device Package:	SOT-23-3
Series:	-
Reference Type:	Shunt
Packaging:	Original-Reel®
Package / Case:	TO-236-3, SC-59, SOT-23-3
Output Type:	Adjustable
Operating Temperature:	-40°C ~ 105°C (TA)
Noise - 10Hz to 10kHz:	-
Noise - 0.1Hz to 10Hz:	-
Mounting Type:	Surface Mount
Current - Supply:	-
Current - Output:	100mA
Current - Cathode:	1mA

Related products
TS24510C00J0G

TERM BLOCK PLUG 24POS 5.08MM

[Amphenol FCI](#)

RFQ

TS24510A00J0G

TERM BLOCK PLUG 24POS 5.08MM

[Amphenol FCI](#)

RFQ


TS2431ACX RF
[TSC](#)

RFQ


TS2431ILT

IC VREF SHUNT ADJ SOT23-3

[STMicroelectronics](#)

RFQ

TS24318C00J0G

TERM BLOCK PLUG 24POS 3.81MM

[Amphenol FCI](#)

RFQ


TS2431EILT

IC VREF SHUNT ADJUSTABLE SOT-23

[STMicroelectronics](#)

RFQ

TS24510B00J0G

TERM BLOCK PLUG 24POS 5.08MM

[Amphenol FCI](#)

RFQ

TS24318D00J0G

TERM BLOCK PLUG 24POS 3.81MM

[Amphenol FCI](#)

RFQ


TS2431AILT-E

in stock

[ST](#)

RFQ


TS2431AILT

IC VREF SHUNT ADJ SOT23-3

[STMicroelectronics](#)

RFQ

Guess You May Looking For
97-3106B28-12PY-940

AB 26C 26#16 PIN PLUG

[Amphenol Industrial Operations](#)

RFQ

FFA.4S.140.CTAC52

CONN INLINE PLUG 1PIN SLD CUP

[LEMO](#)

RFQ

KJB0T23F21HE

CONN RCPT MALE 21POS GOLD CRIMP

[ITT Cannon, LLC](#)

RFQ


CLP-106-02-SM-D-A-P-TR

.050" X .050

[Samtec Inc.](#)

RFQ


32588

CONN SPADE TERM 10-12AWG #8 YEL

[TE Connectivity AMP Connectors](#)

RFQ


SIT1602BC-81-XXS-31.250000Y

-20 TO 70C, 7050, 20PPM, 2.25V-3

[SITIME](#)

RFQ

SIT8208AC-G2-28S-4.096000Y

-20 TO 70C, 2520, 25PPM, 2.8V, 4

[SITIME](#)

RFQ

SIT8208AC-83-28E-16.368000X

-20 TO 70C, 7050, 50PPM, 2.8V, 1

[SITIME](#)

RFQ

SIT8208AI-G2-18S-66.666660Y

-40 TO 85C, 2520, 25PPM, 1.8V, 6

[SITIME](#)

RFQ

SIT8209AI-83-28E-98.304000Y

-40 TO 85C, 7050, 50PPM, 2.8V, 9

[SITIME](#)

RFQ

