

## 87427F5-R/L1



[Nuvoton Technology Corporation America](#)

RAM DRAM  
Lead free / RoHS Compliant  
Integrated Circuits (ICs)

**Buy Now**

We can supply Nuvoton Technology Corporation America 87427F5-R/L1, use the request quote form to request 87427F5-R/L1 price, Nuvoton Technology Corporation America Datasheet PDF and lead time. Zeanoit.com is a professional electronic components distributor. With 3+ Million line items of available electronic components can ship in short lead-time, over 250 thousand part numbers of electronic components in stock for immediately delivery, which may include part number 87427F5-R/L1. The price and lead time for 87427F5-R/L1 depending on the quantity required, availability and warehouse location.

### Shopping Process

**1**

Confirm the product

**2**

submit the order

**3**

payment

**4**

wait for delivery

**5**

receive the goods

### Specifications

Series: \*

### Related products

**nuvoTon**

**87427F5-C/L1**

RAM DRAM  
[Nuvoton Technology Corporation of America](#)

RFQ

**winbond**

**87427F2-R/L1**

[WINBOND](#)

RFQ



**8743-443**

[AMIS](#)

RFQ



**8743-843**

[AMIS](#)

RFQ



**87428**

NYLON-FILAMENT ROPE LANYARD  
[Klein Tools, Inc.](#)

RFQ

**nuvoTon**

**87427F5-R/21**

[NUVOTON](#)

RFQ



**87429**

NYLON-FILAMENT ROPE LANYARD  
[Klein Tools, Inc.](#)

RFQ

**winbond**

**87427F5-C/L1 A4**

[WINBOND](#)

RFQ

**nuvoTon**

**87427F5-R**

[NUVOTON](#)

RFQ



**8743-EP-1009**

[/NA](#)

RFQ

### Guess You May Looking For



**RC1206JR-07120RL**

RES SMD 120 OHM 5% 1/4W 1206  
[Yageo](#)

RFQ



**KTR10EZPF6803**

RES SMD 680K OHM 1% 1/8W 0805  
[Rohm Semiconductor](#)

RFQ



**MCR100JZH1100**

RES SMD 110 OHM 1% 1W 2512  
[Rohm Semiconductor](#)

RFQ



**RE1206FRE0793R1L**

RES SMD 93.1 OHM 1% 1/4W 1206  
[Yageo](#)

RFQ



**RC0805DR-07360KL**

RES SMD 360K OHM 0.5% 1/8W 0805  
[Yageo](#)

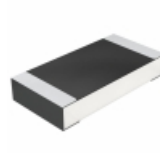
RFQ



**CRGH0603F75K**

RES SMD 75K OHM 1% 1/5W 0603  
[TE Connectivity Passive Product](#)

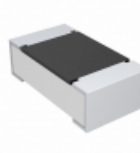
RFQ



**CRCW120612K7FKEC**

RES SMD 12.7K OHM 1% 1/4W 1206  
[Vishay Dale](#)

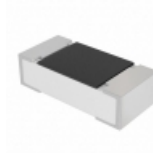
RFQ



**CRCW060311K8FKTB**

RES SMD 11.8K OHM 1% 1/10W 0603  
[Vishay Dale](#)

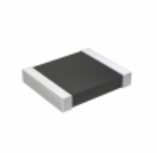
RFQ



**CRCW0402237RFKEDHP**

RES SMD 237 OHM 1% 1/5W 0402  
[Vishay Dale](#)

RFQ



**AF1210FR-0775RL**

RES SMD 75 OHM 1% 1/2W 1210  
[Yageo](#)

RFQ