

## A3932SEQ-T



[Allegro MicroSystems, LLC.](#)

IC MOTOR CONTROLLER PAR 32PLCC

Lead free / RoHS Compliant

Integrated Circuits (ICs)

[A3932SEQ-T.pdf](#)

[Buy Now](#)

We can supply Allegro MicroSystems, LLC. A3932SEQ-T, use the request quote form to request A3932SEQ-T price, Allegro MicroSystems, LLC. Datasheet PDF and lead time. Zeanoit.com is a professional electronic components distributor. With 3+ Million line items of available electronic components can ship in short lead-time, over 250 thousand part numbers of electronic components in stock for immediately delivery, which may include part number A3932SEQ-T. The price and lead time for A3932SEQ-T depending on the quantity required, availability and warehouse location.

### Shopping Process

1

Confirm the product

2

submit the order

3

payment

4

wait for delivery

5

receive the goods

### Specifications

<b>Voltage - Supply:</b>	18 V ~ 50 V
<b>Voltage - Load:</b>	-
<b>Technology:</b>	Power MOSFET
<b>Supplier Device Package:</b>	32-PLCC (11.43x13.97)
<b>Step Resolution:</b>	-
<b>Series:</b>	-
<b>Packaging:</b>	Tube
<b>Package / Case:</b>	32-LCC (J-Lead)
<b>Output Configuration:</b>	Pre-Driver - Half Bridge (3)
<b>Operating Temperature:</b>	-20°C ~ 85°C (TA)
<b>Mounting Type:</b>	Surface Mount
<b>Motor Type - Stepper:</b>	-
<b>Motor Type - AC, DC:</b>	Brushless DC (BLDC)
<b>Interface:</b>	Parallel, PWM
<b>Function:</b>	Controller - Commutation, Direction Management
<b>Current - Output:</b>	-
<b>Applications:</b>	General Purpose

### Related products



**A3930KJPTR-T**

IC MOTOR CONTROLLER PAR 48LQFP  
[Allegro MicroSystems, LLC](#)

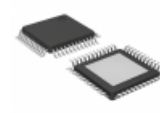
[RFQ](#)



**A3932SEQ**

IC MOTOR CONTROLLER PAR 32PLCC  
[Allegro MicroSystems, LLC](#)

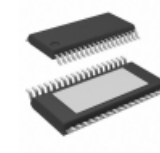
[RFQ](#)



**A3931KJPTR-T**

IC MOTOR CONTROLLER PAR 48LQFP  
[Allegro MicroSystems, LLC](#)

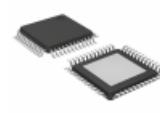
[RFQ](#)



**A3932SLD-T**

IC MOTOR CONTROLLER PAR 38TSSOP  
[Allegro MicroSystems, LLC](#)

[RFQ](#)



**A3931KJP-T**

IC MOTOR CONTROLLER PAR 48LQFP  
[Allegro MicroSystems, LLC](#)

[RFQ](#)



**A3932SEQTR**

IC MOTOR CONTROLLER PAR 32PLCC  
[Allegro MicroSystems, LLC](#)

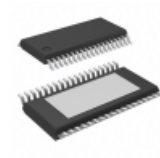
[RFQ](#)



**A3931KJPT**

[ALLEGRO](#)

[RFQ](#)



**A3932SLDTR-T**

IC MOTOR CONTROLLER PAR 38TSSOP  
[Allegro MicroSystems, LLC](#)

[RFQ](#)



**A3932SEQTR-T**

IC MOTOR CONTROLLER PAR 32PLCC  
[Allegro MicroSystems, LLC](#)

[RFQ](#)

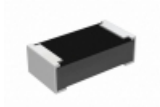


**A3935KED**

IC MOTOR CONTROLLER PAR 44PLCC  
[Allegro MicroSystems, LLC](#)

[RFQ](#)

### Guess You May Looking For



**RCP0603B1K30JEA**

RES SMD 1.3K OHM 5% 3.9W 0603  
[Vishay Dale](#)

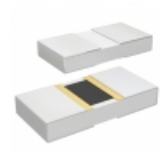
[RFQ](#)



**PHP00603E1402BBT1**

RES SMD 14K OHM 0.1% 3/8W 0603  
[Vishay Thin Film](#)

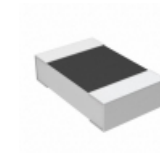
[RFQ](#)



**PHP00805E6810BST1**

RES SMD 681 OHM 0.1% 5/8W 0805  
[Vishay Thin Film](#)

[RFQ](#)



**RP73D2A698KBTG**

RES SMD 698K OHM 0.1% 1/8W 0805  
[TE Connectivity Passive Product](#)

[RFQ](#)



**RG2012V-561-B-T5**

RES SMD 560 OHM 0.1% 1/8W 0805  
[Susumu](#)

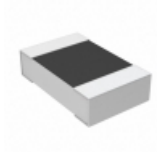
[RFQ](#)



**RG1608V-1151-W-T5**

RES SMD 1.15K OHM 1/10W 0603  
[Susumu](#)

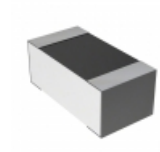
[RFQ](#)



**RN73C2A107RBTG**

RES SMD 107 OHM 0.1% 1/10W 0805  
[TE Connectivity Passive Product](#)

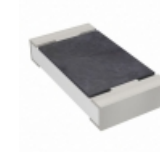
[RFQ](#)



**RN73C1J15RBTG**

RES SMD 15 OHM 0.1% 1/16W 0603  
[TE Connectivity Passive Product](#)

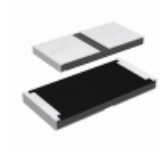
[RFQ](#)



**RT1206WRC07174RL**

RES SMD 174 OHM 0.05% 1/4W 1206  
[Yageo](#)

[RFQ](#)



**RCP2512W2K00JTP**

RES SMD 2K OHM 5% 22W 2512  
[Vishay Dale](#)

[RFQ](#)