

**AT29C1024-70TI**

**Microchip Technology**

IC FLASH 1MBIT 70NS 48TSOP  
 Contains lead / RoHS non-compliant  
 Integrated Circuits (ICs)

[AT29C1024-70TI.pdf](#)

**Buy Now**

Images are for reference only.

See Product Specifications for product details.

If you are interested to buy AT29C1024-70TI, Just Email us.

Sales@zeanoit.com

our sales team will reply you within 24 hours

**Shopping Process**

**1**

Confirm the product

**2**

submit the order

**3**

payment

**4**

wait for delivery

**5**

receive the goods

**Specifications**

<b>Voltage - Supply:</b>	4.5 V ~ 5.5 V
<b>Supplier Device Package:</b>	48-TSOP
<b>Speed:</b>	70ns
<b>Series:</b>	-
<b>Packaging:</b>	Tray
<b>Package / Case:</b>	48-TFSOP (0.724", 18.40mm Width)
<b>Operating Temperature:</b>	-40°C ~ 85°C (TC)
<b>Memory Type:</b>	Non-Volatile
<b>Memory Size:</b>	1Mb (64K x 16)
<b>Memory Format:</b>	FLASH
<b>Interface:</b>	Parallel

**Related products**

**AT29C1024-70JI**

IC FLASH 1MBIT 70NS 44PLCC  
[Microchip Technology](#)

RFQ


**AT29C1024-90TI**

IC FLASH 1MBIT 90NS 48TSOP  
[Microchip Technology](#)

RFQ


**AT29C1024-70T**

[ATMEL](#)

RFQ


**AT29C1024-90**

in stock  
[ATMEL](#)

RFQ


**AT29C1024-90JI**

IC FLASH 1MBIT 90NS 44PLCC  
[Microchip Technology](#)

RFQ


**AT29C1024-90TC**

IC FLASH 1MBIT 90NS 48TSOP  
[Microchip Technology](#)

RFQ


**AT29C1024-70JU**

in stock  
[ATMEL](#)

RFQ


**AT29C1024-70TC**

IC FLASH 1MBIT 70NS 48TSOP  
[Microchip Technology](#)

RFQ


**AT29C1024-90JC**

IC FLASH 1MBIT 90NS 44PLCC  
[Microchip Technology](#)

RFQ


**AT29C1024-70TC**

in stock  
[ATMEL](#)

RFQ

**Guess You May Looking For**

**RC1206FR-072M7L**

RES SMD 2.7M OHM 1% 1/4W 1206  
[Yageo](#)

RFQ


**RC1005J395CS**

RES SMD 3.9M OHM 5% 1/16W 0402  
[Samsung Electro-Mechanics America, Inc.](#)

RFQ


**RC0603DR-0728K7L**

RES SMD 28.7KOHM 0.5% 1/10W 0603  
[Yageo](#)

RFQ


**CR0402-FX-9313GLF**

RES SMD 931K OHM 1% 1/16W 0402  
[Bourns Inc.](#)

RFQ


**RR0816Q-34R8-D-53R**

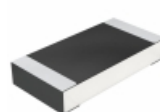
RES SMD 34.8 OHM 0.5% 1/16W 0603  
[Susumu](#)

RFQ


**AF0805FR-0711K5L**

RES SMD 11.5K OHM 1% 1/8W 0805  
[Yageo](#)

RFQ


**CRCW12062M10FKTA**

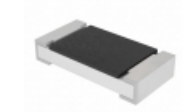
RES SMD 2.1M OHM 1% 1/4W 1206  
[Vishay Dale](#)

RFQ


**AT0603DRE072K94L**

RES SMD 2.94KOHM 0.5% 1/10W 0603  
[Yageo](#)

RFQ


**CRCW120613K0JNEAHP**

RES SMD 13K OHM 5% 3/4W 1206  
[Vishay Dale](#)

RFQ


**AT0402BRD0784K5L**

RES SMD 84.5KOHM 0.1% 1/16W 0402  
[Yageo](#)

RFQ