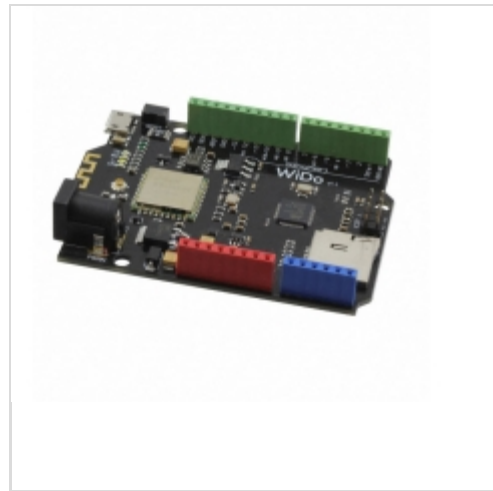


**DFR0321**



**DFRobot**

WIDO - OPEN SOURCE IOT NODE (ARD)  
Lead free / RoHS Compliant  
RF/IF and RFID

- [1.DFR0321.pdf](#)
- [2.DFR0321.pdf](#)

**Buy Now**

**In Stock**

**48 pcs**

Minimum:1

Multiples:1

Manufacturer lead time 10 weeks

parts#DFR0321 is available, see description of DFR0321 as below .

use the request quote form to request DFR0321 price and lead time.

Buy Electronic Components at zeanoit.com .we are an independent distributor of electronic components with extensive inventory in stock.

The price and lead time for DFR0321 depend on the quantity required, availability and warehouse location.Contact us today and our sales team will send you quotation soon.

Email: sales@zeanoit.com

Shopping Process

**1**

**Confirm the product**

**2**

**submit the order**

**3**

**payment**

**4**

**wait for delivery**

**5**

**receive the goods**

Specifications

<b>Type:</b>	Transceiver; 802.11 b/g (Wi-Fi, WiFi, WLAN)
<b>Supplied Contents:</b>	Board
<b>Series:</b>	-
<b>Frequency:</b>	2.4GHz
<b>For Use With/Related Products:</b>	WG1300

Related products



**DFR0306**  
BLUNO MEGA 1280 - AN ARDUINO WIT  
[DFRobot](#)

RFQ



**DFR0310**  
UPPER DECK FOR MINIQ  
[DFRobot](#)

RFQ



**DFR0327**  
ARDUINO EXPANSION SHIELD FOR RAS  
[DFRobot](#)

RFQ



**DFR0311**  
ARDUINO EXPANSION SHIELD FOR RAS  
[DFRobot](#)

RFQ



**DFR0308**  
DTMF SHIELD  
[DFRobot](#)

RFQ



**DFR0326**  
BANANA PI - A NEW GENERATION HIG  
[DFRobot](#)

RFQ



**DFR0323**  
BLUNO MEGA 2560 - AN ARDUINO WIT  
[DFRobot](#)

RFQ



**DFR0329**  
BLUNO M3 - A STM32 ARM WITH BLUE  
[DFRobot](#)

RFQ



**DFR0316**  
MCP3424 18-BIT ADC-4 CHANNEL WIT  
[DFRobot](#)

RFQ



**DFR0331**  
ROMEO BOARD WITHOUT INTEL EDISON  
[DFRobot](#)

RFQ

Guess You May Looking For



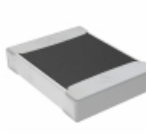
**HRG3216P-4871-B-T5**  
RES SMD 4.87K OHM 0.1% 1W 1206  
[Susumu](#)

RFQ



**RT1206WRB0716R2L**  
RES SMD 16.2 OHM 0.05% 1/4W 1206  
[Yageo](#)

RFQ



**TNPW1210127RBETA**  
RES SMD 127 OHM 0.1% 1/3W 1210  
[Vishay Dale](#)

RFQ



**SM4124FT25L0**  
RES SMD 0.025 OHM 1% 2W 4124  
[Stackpole Electronics Inc.](#)

RFQ



**RG2012V-2611-D-T5**  
RES SMD 2.61K OHM 0.5% 1/8W 0805  
[Susumu](#)

RFQ



**RT0805WRB075K9L**  
RES SMD 5.9K OHM 0.05% 1/8W 0805  
[Yageo](#)

RFQ



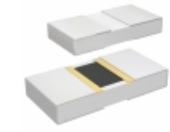
**RG1608V-4870-D-T5**  
RES SMD 487 OHM 0.5% 1/10W 0603  
[Susumu](#)

RFQ



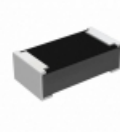
**RG1005V-1240-D-T10**  
RES SMD 124 OHM 0.5% 1/16W 0402  
[Susumu](#)

RFQ



**PHP00805H9420BBT1**  
RES SMD 942 OHM 0.1% 5/8W 0805  
[Vishay Thin Film](#)

RFQ



**RCP0603B22R0GEA**  
RES SMD 22 OHM 2% 3.9W 0603  
[Vishay Dale](#)

RFQ