

AT25080AN-10SI-2.7-T

Microchip Technology

IC EEPROM 8KBIT 20MHZ 8SOIC
 Contains lead / RoHS non-compliant
 Integrated Circuits (ICs)

[AT25080AN-10SI-2.7-T.pdf](#)

Buy Now

We can supply AT25080AN-10SI-2.7-T, use the request quote form to request AT25080AN-10SI-2.7-T price and lead time. Zeano is a professional electronic components distributor. With 3+ Million line items of available electronic components can ship in short lead-time, over 250 thousand part numbers of electronic components in stock for immediately delivery, which may include part number AT25080AN-10SI-2.7-T. The price and lead time for AT25080AN-10SI-2.7-T depending on the quantity required and warehouse location. Contact us and our sales representative will provide you price. We look forward to work with you.

Shopping Process

1

Confirm the product

2

submit the order

3

payment

4

wait for delivery

5

receive the goods

Specifications

Voltage - Supply:	2.7 V ~ 5.5 V
Supplier Device Package:	8-SOIC
Speed:	20MHz
Series:	-
Packaging:	Tape & Reel (TR)
Package / Case:	8-SOIC (0.154", 3.90mm Width)
Operating Temperature:	-40°C ~ 85°C (TA)
Memory Type:	Non-Volatile
Memory Size:	8Kb (1K x 8)
Memory Format:	EEPROM
Interface:	SPI Serial

Related products



AT25080AN-10SI-1.8
 IC EEPROM 8KBIT 20MHZ 8SOIC
[Microchip Technology](#)

RFQ



AT25080AN-10SU-1.8
 IC EEPROM 8KBIT 20MHZ 8SOIC
[Microchip Technology](#)

RFQ



AT25080AN-10SU-1.8
 in stock
[ATMEL](#)

RFQ



AT25080AN-10SU-2.7
 IC EEPROM 8KBIT 20MHZ 8SOIC
[Microchip Technology](#)

RFQ



AT25080AN-10SE-2.7
 in stock
[ATMEL](#)

RFQ



AT25080AN
 in stock
[ATMEL](#)

RFQ



AT25080AN-10SQ-2.7
 in stock
[ATMEL](#)

RFQ



AT25080AN-10SI-1.8-T
 IC EEPROM 8KBIT 20MHZ 8SOIC
[Microchip Technology](#)

RFQ



AT25080AN-10SU-1.8-T
 IC EEPROM 8KBIT 20MHZ 8SOIC
[Microchip Technology](#)

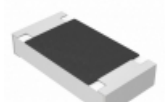
RFQ



AT25080AN-10SI-2.7
 IC EEPROM 8KBIT 20MHZ 8SOIC
[Microchip Technology](#)

RFQ

Guess You May Looking For



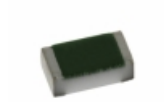
ERJ-8ENF1782V
 RES SMD 17.8K OHM 1% 1/4W 1206
[Panasonic Electronic Components](#)

RFQ



RT0402BRD0739KL
 RES SMD 39K OHM 0.1% 1/16W 0402
[Yageo](#)

RFQ



TNPW0402590RBEEED
 RES SMD 590 OHM 0.1% 1/16W 0402
[Vishay Dale](#)

RFQ



KTR10EZPF2430
 RES SMD 243 OHM 1% 1/8W 0805
[Rohm Semiconductor](#)

RFQ



RC0603FR-078R66L
 RES SMD 8.66 OHM 1% 1/10W 0603
[Yageo](#)

RFQ



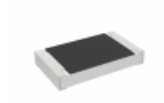
RV0603FR-0764K9L
 RES SMD 64.9K OHM 1% 1/10W 0603
[Yageo](#)

RFQ



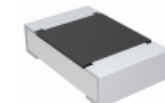
CRCW040236R0JNTD
 RES SMD 36 OHM 5% 1/16W 0402
[Vishay Dale](#)

RFQ



RCS04021K15FKED
 RES SMD 1.15K OHM 1% 1/5W 0402
[Vishay Dale](#)

RFQ



CRCW08055R60JNTA
 RES SMD 5.6 OHM 5% 1/8W 0805
[Vishay Dale](#)

RFQ



RT1206DRD07383KL
 RES SMD 383K OHM 0.5% 1/4W 1206
[Yageo](#)

RFQ