

## MIC4420CM



### Microchip Technology

IC DRIVER MOSFET 6A LOSIDE 8SOIC  
 Contains lead / RoHS non-compliant  
 Integrated Circuits (ICs)

[MIC4420CM.pdf](#)

[Buy Now](#)

We can supply MIC4420CM, use the request quote form to request MIC4420CM price and lead time. Zeano is a professional electronic components distributor. With 3+ Million line items of available electronic components can ship in short lead-time, over 250 thousand part numbers of electronic components in stock for immediately delivery, which may include part number MIC4420CM. The price and lead time for MIC4420CM depending on the quantity required and warehouse location. Contact us and our sales representative will provide you price. We look forward to work with you.

## Shopping Process

1

Confirm the product

2

submit the order

3

payment

4

wait for delivery

5

receive the goods

## Specifications

<b>Voltage - Supply:</b>	4.5 V ~ 18 V
<b>Supplier Device Package:</b>	8-SOIC
<b>Series:</b>	-
<b>Rise / Fall Time (Typ):</b>	12ns, 13ns
<b>Packaging:</b>	Tube
<b>Package / Case:</b>	8-SOIC (0.154", 3.90mm Width)
<b>Operating Temperature:</b>	0°C ~ 150°C (TJ)
<b>Number of Drivers:</b>	1
<b>Mounting Type:</b>	Surface Mount
<b>Logic Voltage - VIL, VIH:</b>	0.8V, 2.4V
<b>Input Type:</b>	Non-Inverting
<b>Gate Type:</b>	N-Channel, P-Channel MOSFET
<b>Driven Configuration:</b>	Low-Side
<b>Current - Peak Output (Source, Sink):</b>	6A, 6A
<b>Channel Type:</b>	Single

## Related products



**MIC4420CT**  
 IC DRIVER MOSFET 6A LS TO-220-5  
[Microchip Technology](#)

RFQ



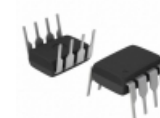
**MIC4420BN**  
 IC DRIVER MOSFET 6A LO SIDE 8DIP  
[Microchip Technology](#)

RFQ



**MIC4420YM TR**  
[MICREL](#)

RFQ



**MIC4420CN**  
 IC DRIVER MOSFET 6A LO SIDE 8DIP  
[Microchip Technology](#)

RFQ



**MIC4420BMM**  
 IC DRIVER MOSFET 6A LS 8-MSOP  
[Microchip Technology](#)

RFQ



**MIC4420BM-TR**  
 IC DRIVER MOSFET 6A LOSIDE 8SOIC  
[Microchip Technology](#)

RFQ



**MIC4420BMTR**  
[MICREL](#)

RFQ



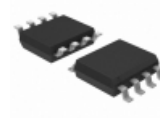
**MIC4420CM-TR**  
 IC DRIVER MOSFET 6A LS 8-SOIC  
[Microchip Technology](#)

RFQ



**MIC4420BMM-TR**  
 IC DRIVER MOSFET 6A LS 8-MSOP  
[Microchip Technology](#)

RFQ



**MIC4420YM**  
 IC DRIVER MOSFET 6A LS 8-SOIC  
[Microchip Technology](#)

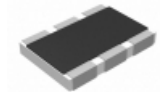
RFQ

## Guess You May Looking For



**RNCF1210BTE1K27**  
 RES SMD 1.27K OHM 0.1% 1/3W 1210  
[Stackpole Electronics Inc.](#)

RFQ



**RC1218DK-0727K4L**  
 RES SMD 27.4K OHM 1W 1812 WIDE  
[Yageo](#)

RFQ



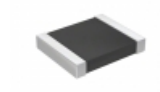
**RNCF1210BTC3K16**  
 RES SMD 3.16K OHM 0.1% 1/3W 1210  
[Stackpole Electronics Inc.](#)

RFQ



**TNPW08058K56BEEA**  
 RES SMD 8.56K OHM 0.1% 1/8W 0805  
[Vishay Dale](#)

RFQ



**RT1210CRD078K06L**  
 RES SMD 8.06KOHM 0.25% 1/4W 1210  
[Yageo](#)

RFQ



**RNCF1210BKE102R**  
 RES SMD 102 OHM 0.1% 1/3W 1210  
[Stackpole Electronics Inc.](#)

RFQ



**RG2012N-2673-B-T5**  
 RES SMD 267K OHM 0.1% 1/8W 0805  
[Susumu](#)

RFQ



**RT0805WRD07237RL**  
 RES SMD 237 OHM 0.05% 1/8W 0805  
[Yageo](#)

RFQ



**RT0805WRD07249KL**  
 RES SMD 249K OHM 0.05% 1/8W 0805  
[Yageo](#)

RFQ



**RT0805WRD0797K6L**  
 RES SMD 97.6KOHM 0.05% 1/8W 0805  
[Yageo](#)

RFQ