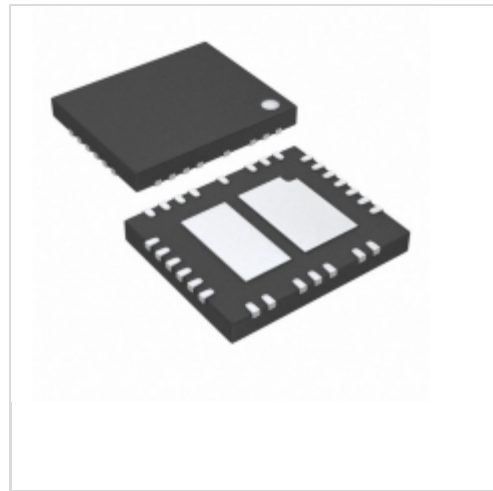


LT3651EUHE-4.1#PBF



[Linear Technology / Analog Devices](#)

IC CHRGMGMT LI-ION/LI-POL 36QFN

Lead free / RoHS Compliant

Integrated Circuits (ICs)

[LT3651EUHE-4.1#PBF.pdf](#)

Buy Now

Images are for reference only.

See Product Specifications for product details.

If you are interested to buy LT3651EUHE-4.1#PBF, Just Email us.

Sales@zeanoit.com

our sales team will reply you within 24 hours

Out Stock

0 pcs

Minimum:1

Multiples:100

Manufacturer lead time 10 weeks

Shopping Process

1

Confirm the product

2

submit the order

3

payment

4

wait for delivery

5

receive the goods

Specifications

Voltage - Supply (Max):	32V
Supplier Device Package:	36-QFN (5x6)
Series:	-
Programmable Features:	Current, Timer
Packaging:	Tube
Package / Case:	36-WFQFN Exposed Pad
Operating Temperature:	-40°C ~ 125°C (TJ)
Number of Cells:	1
Interface:	-
Fault Protection:	Over Temperature
Current - Charging:	Constant - Programmable
Charge Current - Max:	4A
Battery Pack Voltage:	4.1V
Battery Chemistry:	Lithium-Ion/Polymer

Related products

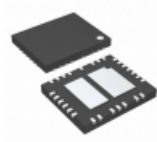


LT365142

in stock

[LINEAR](#)

RFQ

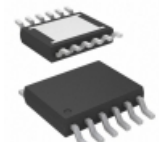


LT3651EUHE-8.2#PBF

IC CHRGMGMT LI-ION/LI-POL 36QFN

[Linear Technology](#)

RFQ

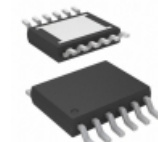


LT3650IMSE-8.4#PBF

IC CHARGER LI-ION 8.4V 2A 12MSOP

[Linear Technology](#)

RFQ

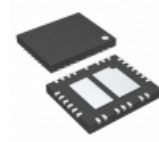


LT3650IMSE-8.4#TRPBF

IC CHARGER LI-ION 8.4V 2A 12MSOP

[Linear Technology](#)

RFQ

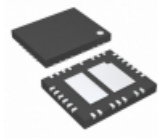


LT3651EUHE-4.1#TRPBF

IC CHRGMGMT LI-ION/LI-POL 36QFN

[Linear Technology](#)

RFQ



LT3651EUHE-8.2#TRPBF

IC CHRGMGMT LI-ION/LI-POL 36QFN

[Linear Technology](#)

RFQ



LT3650IMSE-8.2#TRPBF

IC CHARGER LI-ION 8.2V 2A 12MSOP

[Linear Technology](#)

RFQ

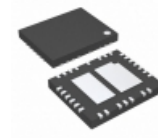


LT3650IMSE-8.2#PBF

IC CHARGER LI-ION 8.2V 2A 12MSOP

[Linear Technology](#)

RFQ

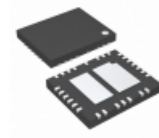


LT3651EUHE-4.2#PBF

IC CHARGER BATTERY LI-ION 36QFN

[Linear Technology](#)

RFQ



LT3651EUHE-8.4#PBF

IC CHRGMGMT LI-ION/LI-POL 36QFN

[Linear Technology](#)

RFQ

Guess You May Looking For



RNCF1206BTE6K34

RES SMD 6.34K OHM 0.1% 1/3W 1206

[Stackpole Electronics Inc.](#)

RFQ

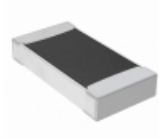


AT0603CRD073K32L

RES SMD 3.32K OHM 1/10W 0603

[Yageo](#)

RFQ



RNCF1206BTE9K09

RES SMD 9.09K OHM 0.1% 1/4W 1206

[Stackpole Electronics Inc.](#)

RFQ

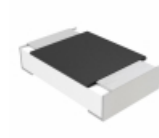


RT0603CRC072K94L

RES SMD 2.94K OHM 1/10W 0603

[Yageo](#)

RFQ

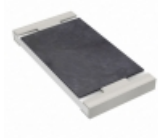


MCU08050D2941BP500

RES SMD 2.94K OHM 0.1% 1/8W 0805

[Vishay Beyschlag](#)

RFQ

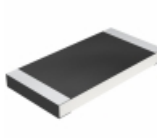


RT2512FKE0713K7L

RES SMD 13.7K OHM 1% 3/4W 2512

[Yageo](#)

RFQ

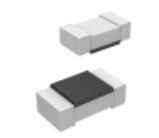


CRCW251247R0JNTG

RES SMD 47 OHM 5% 1W 2512

[Vishay Dale](#)

RFQ



CRT0603-BY-1303ELF

RES SMD 130K OHM 0.1% 1/10W 0603

[Bourns Inc.](#)

RFQ

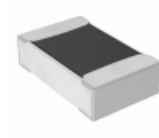


RNCF2010DTE6R80

RES SMD 6.8 OHM 0.5% 1/3W 2010

[Stackpole Electronics Inc.](#)

RFQ



RNCF0805BKE226R

RES SMD 226 OHM 0.1% 1/8W 0805

[Stackpole Electronics Inc.](#)

RFQ