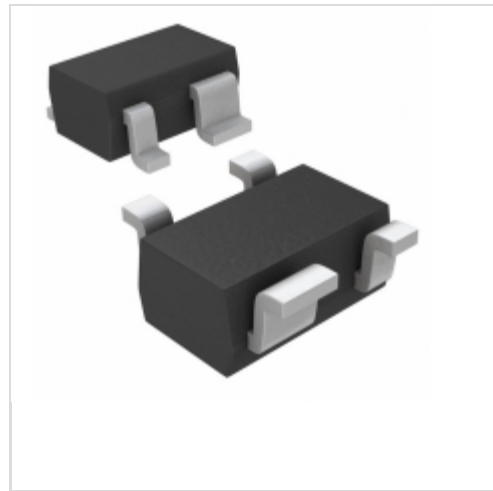


MAX6385XS31D2-T

Maxim Integrated

IC MPU/RESET CIRC 3.08V SC70-4

Contains lead / RoHS non-compliant

Integrated Circuits (ICs)

1.MAX6385XS31D2-T.pdf

2.MAX6385XS31D2-T.pdf

Buy Now

We can supply MAX6385XS31D2-T, use the request quote form to request MAX6385XS31D2-T price and lead time. Zeano is a professional electronic components distributor. With 3+ Million line items of available electronic components can ship in short lead-time, over 250 thousand part numbers of electronic components in stock for immediately delivery, which may include part number MAX6385XS31D2-T. The price and lead time for MAX6385XS31D2-T depending on the quantity required and warehouse location. Contact us and our sales representative will provide you price. We look forward to work with you.

Shopping Process

1
Confirm the product
2
submit the order
3
payment
4
wait for delivery
5
receive the goods

Specifications

Voltage - Threshold:	3.08V
Type:	Simple Reset/Power-On Reset
Supplier Device Package:	SC-70-4
Series:	-
Reset Timeout:	20 ms Minimum
Reset:	Active High
Packaging:	Tape & Reel (TR)
Package / Case:	SC-82A, SOT-343
Output:	Push-Pull, Totem Pole
Operating Temperature:	-40°C ~ 125°C (TA)
Number of Voltages Monitored:	1
Mounting Type:	Surface Mount

Related products


MAX6385XS31D1-T

 in stock
MAXIM

RFQ


MAX6385XS30D7-T

 in stock
MAXIM

RFQ


MAX6385XS30D7-T

 IC MPU/RESET CIRC 3.00V SC70-4
Maxim Integrated

RFQ


MAX6385XS31D3-T

 in stock
MAXIM

RFQ


MAX6385XS31D3

 in stock
MAXIM

RFQ


MAX6385XS31D4-T

 IC MPU/RESET CIRC 3.08V SC70-4
Maxim Integrated

RFQ


MAX6385XS31D1-T

 IC MPU/RESET CIRC 3.08V SC70-4
Maxim Integrated

RFQ


MAX6385XS31D3+T

 IC MPU/RESET CIRC 3.08V SC70-4
Maxim Integrated

RFQ


MAX6385XS31D4-T

 in stock
MAXIM

RFQ


MAX6385XS31D2-T

 in stock
MAXIM

RFQ

Guess You May Looking For


MCR18EZH4753

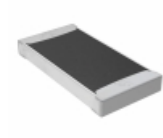
 RES SMD 475K OHM 1% 1/4W 1206
Rohm Semiconductor

RFQ


RG3216P-1000-W-T1

 RES SMD 100 OHM 0.05% 1/4W 1206
Susumu

RFQ


TNPW201028K0BEEF

 RES SMD 28K OHM 0.1% 0.4W 2010
Vishay Dale

RFQ


YC102-JR-07620RL

 RES ARRAY 2 RES 620 OHM 0302
Yageo

RFQ


YC248-FR-07143KL

 RES ARRAY 8 RES 143K OHM 1606
Yageo

RFQ


MP2060-2.00-1%

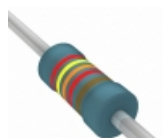
 RES 2 OHM 60W 1% TO220
Caddock Electronics Inc.

RFQ


23J220E

 RES 220 OHM 3W 5% AXIAL
Ohmite

RFQ


MRS25000C2432FRP00

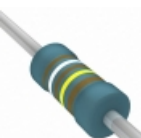
 RES 24.3K OHM 0.6W 1% AXIAL
Vishay BC Components

RFQ


RN55C48R7FRE6

 RES 48.7 OHM 1/8W 1% AXIAL
Vishay Dale

RFQ


HVR3700001914FR500

 RES 1.91M OHM 1/2W 1% AXIAL
Vishay BC Components

RFQ