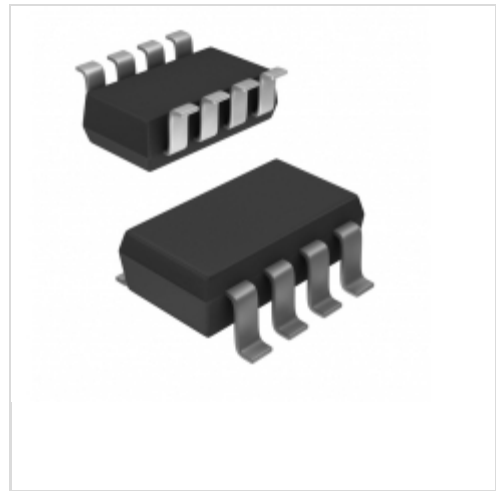


ZXGD3102T8TA



Diodes Incorporated

BIPOLAR TRANSISTOR GATE DRIVER N

Lead free / RoHS Compliant

Integrated Circuits (ICs)

[ZXGD3102T8TA.pdf](#)

Buy Now

Out Stock

0 pcs

Minimum:1

Multiples:100

Manufacturer lead time 10 weeks

part#ZXGD3102T8TA is available, see description of ZXGD3102T8TA as below .

use the request quote form to request ZXGD3102T8TA price and lead time.

Buy Electronic Components at zeanoit.com .we are an independent distributor of electronic components with extensive inventory in stock.

The price and lead time for ZXGD3102T8TA depending on the quantity required, availability and warehouse location.Contact us today and our sales team will send you quotation soon.

Email: sales@zeanoit.com

Shopping Process

1

Confirm the product

2

submit the order

3

payment

4

wait for delivery

5

receive the goods

Specifications

Voltage - Supply:	5 V ~ 15 V
Type:	N+1 ORing Controller
Supplier Device Package:	SM8
Series:	-
Ratio - Input:Output:	N:1
Packaging:	Tape & Reel (TR)
Package / Case:	SOT-223-8
Operating Temperature:	-40°C ~ 150°C
Mounting Type:	Surface Mount
Internal Switch(s):	No
FET Type:	N-Channel
Delay Time - OFF:	105ns
Current - Supply:	2.4mA
Current - Output (Max):	7A
Applications:	General Purpose

Related products



ZXGD3101T8TA
IC FLYBACK CONVERTER SM8
[Diodes Incorporated](#)

[RFQ](#)



ZXGD3101N8TC
IC SYNCH MOSFET CNTRLR 4A 8SO
[Diodes Incorporated](#)

[RFQ](#)



ZXGD3104N8TC
IC SYNCH MOSFET CNTRLR 8SO
[Diodes Incorporated](#)

[RFQ](#)



ZXGD3103
[ZETEX](#)

[RFQ](#)



ZXGD3105N8TC
IC SYNCH MOSFET CNTRLR 8SO
[Diodes Incorporated](#)

[RFQ](#)



ZXGD3103N8TA
[ZETEX/DIODES](#)

[RFQ](#)



ZXGD3009DYTA
IC GATE DRVR IGBT/MOSFET SOT363
[Diodes Incorporated](#)

[RFQ](#)



ZXGD3009E6TA
IC GATE DRVR IGBT/MOSFET SOT23-6
[Diodes Incorporated](#)

[RFQ](#)



ZXGD3101N8
[DIODES](#)

[RFQ](#)



ZXGD3103N8TC
IC SYNCH MOSFET CNTRLR 4A 8SO
[Diodes Incorporated](#)

[RFQ](#)

Guess You May Looking For



PWR163S-25-R020JE
RES SMD 0.02 OHM 5% 25W DPAK
[Bourns Inc.](#)

[RFQ](#)



RG1608V-3321-P-T1
RES SMD 3.32K OHM 1/10W 0603
[Susumu](#)

[RFQ](#)



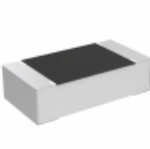
WSLP59312L000FEA
RES SMD 0.002 OHM 1% 8W 5931
[Vishay Dale](#)

[RFQ](#)



RG2012V-1022-P-T1
RES SMD 10.2KOHM 0.02% 1/8W 0805
[Susumu](#)

[RFQ](#)



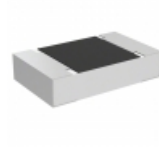
TNPU060368K0AZEN00
RES SMD 68K OHM 0.05% 1/10W 0603
[Vishay Dale](#)

[RFQ](#)



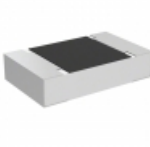
WSLP2726L7000FEA
RES SMD 0.0007 OHM 1% 7W 2726
[Vishay Dale](#)

[RFQ](#)



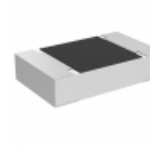
TNPU0805121RAZEN00
RES SMD 121 OHM 0.05% 1/8W 0805
[Vishay Dale](#)

[RFQ](#)



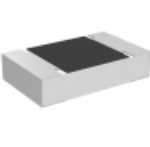
TNPU0805124RAZEN00
RES SMD 124 OHM 0.05% 1/8W 0805
[Vishay Dale](#)

[RFQ](#)



TNPU08053K40AZEN00
RES SMD 3.4K OHM 0.05% 1/8W 0805
[Vishay Dale](#)

[RFQ](#)



TNPU08058K20AZEN00
RES SMD 8.2K OHM 0.05% 1/8W 0805
[Vishay Dale](#)

[RFQ](#)