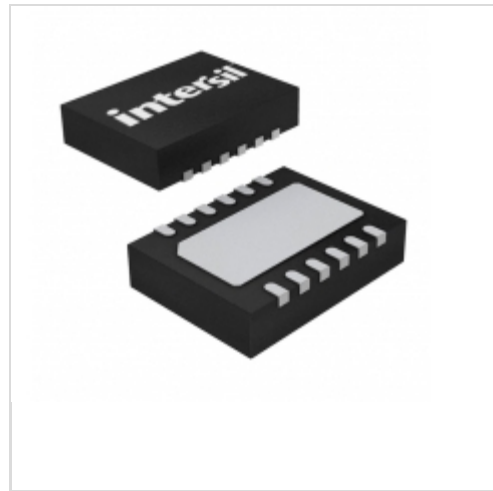


ISL9209IRZ




Intersil

IC SAFETY SYSTEM CHARGER 12-TDFN

Lead free / RoHS Compliant

Integrated Circuits (ICs)

 [ISL9209IRZ.pdf](#)

 **Buy Now**

Images are for reference only.

See Product Specifications for product details.

If you are interested to buy ISL9209IRZ, Just Email us.

Sales@zeanoit.com

our sales team will reply you within 24 hours

Shopping Process

1

Confirm the product

2

submit the order

3

payment

4

wait for delivery

5

receive the goods

Specifications

Supplier Device Package:	12-TDFN (4x3)
Series:	-
Packaging:	Tube
Package / Case:	12-WDFN Exposed Pad
Operating Temperature:	-40°C ~ 85°C (TA)
Number of Cells:	-
Interface:	-
Function:	Battery Monitor
Fault Protection:	Over Current, Over Voltage
Battery Chemistry:	Lithium-Ion

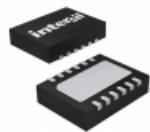
Related products

intersil
A Renesas Company

ISL9208IRZ-T

[Intersil](#)

RFQ

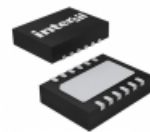


ISL9209BIRZ-T

IC SAFETY SYSTEM CHARGER 12-TDFN

[Intersil](#)

RFQ



ISL9209IRZ-T

IC SAFETY SYSTEM CHARGER 12-TDFN

[Intersil](#)

RFQ



ISL9211AIRU58XZ-T

IC SAFETY CIRCUIT CHARGE 8UTDFN

[Intersil](#)

RFQ



ISL9211AIRU48XZ-T

IC SAFETY CIRCUIT CHARGE 8UTDFN

[Intersil](#)

RFQ

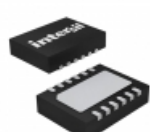


ISL9211AIRU68XZ-T

IC SAFETY CIRCUIT CHARGE 8UTDFN

[Intersil](#)

RFQ

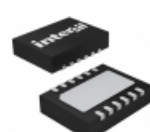


ISL9209BIRZ

IC SAFETY SYSTEM CHARGER 12-TDFN

[Intersil](#)

RFQ



ISL9209CIRZ

IC SAFETY SYSTEM CHARGER 12-TDFN

[Intersil](#)

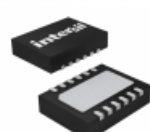
RFQ

intersil
A Renesas Company

ISL9211AIRU58XZ

[INTERSIL](#)

RFQ



ISL9209CIRZ-T

IC SAFETY SYSTEM CHARGER 12-TDFN

[Intersil](#)

RFQ

Guess You May Looking For



RT0603BRC071K27L

RES SMD 1.27KOHM 0.1% 1/10W 0603

[Yageo](#)

RFQ



RG1608N-1582-D-T5

RES SMD 15.8KOHM 0.5% 1/10W 0603

[Susumu](#)

RFQ



RL2512FK-070R065L

RES SMD 0.065 OHM 1% 1W 2512

[Yageo](#)

RFQ



RG2012N-2151-D-T5

RES SMD 2.15K OHM 0.5% 1/8W 0805

[Susumu](#)

RFQ

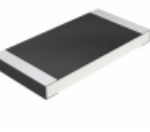


RG2012N-1820-D-T5

RES SMD 182 OHM 0.5% 1/8W 0805

[Susumu](#)

RFQ

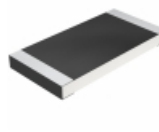


CRCW2512143RFKTG

RES SMD 143 OHM 1% 1W 2512

[Vishay Dale](#)

RFQ



CRCW2512698RFKTG

RES SMD 698 OHM 1% 1W 2512

[Vishay Dale](#)

RFQ



AT1206BRD0739K2L

RES SMD 39.2K OHM 0.1% 1/4W 1206

[Yageo](#)

RFQ

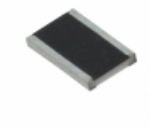


AT1206BRD0744K2L

RES SMD 44.2K OHM 0.1% 1/4W 1206

[Yageo](#)

RFQ



RCL12182K10FKEK

RES SMD 2.1K OHM 1W 1812 WIDE

[Vishay Dale](#)

RFQ